

6

5

4

3

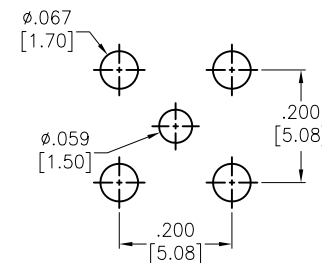
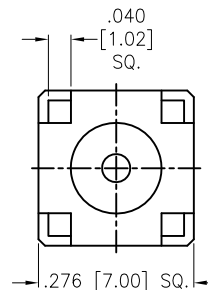
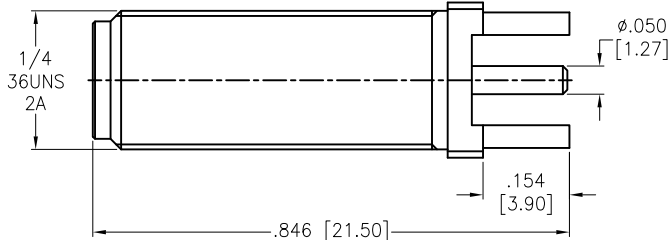
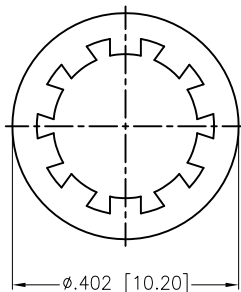
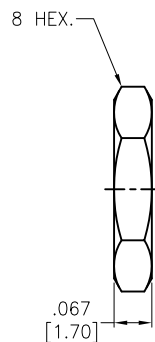
2

1

APPROVED: _____

DATE: _____ TITLE: _____

Rev	AWO #	Description	Date	Appr
-		RELEASED	4/20/16	



RECOMMENDED PCB LAYOUT

HEX NUT	BRASS	GOLD
WASHER	STEEL	GOLD
CONTACT PIN	BRASS	GOLD
INSULATOR	PTFE	WHITE
BARREL	BRASS	GOLD
DESCRIPTION	MATERIAL	FINISH

SPECIFICATIONS:

Electrical:

Nominal Impedance: 50 ohms
 Frequency range: DC 0–18 GHz
 Working voltage: 335 Volts max
 Proof voltage: 1000 Volts
 Temperature Rating:
 Operating temperature: -65°C to +165°C

Environmental:

Lead free, RoHS compliant.



UNLESS OTHERWISE SPECIFIED
 ALL DIMENSIONS ARE INCHES [MM]
 TOLERANCES: EXCEPT AS NOTED
 INCHES HOLES
 .X ± .10 Ø.X ± .10
 .XX ± .020 Ø.XX ± .015
 .XXX ± .015 Ø.XXX ± .010

ADAM TECH

909 Rahway Avenue, Union, NJ 07083
 Phone: 908-687-5000 Fax: 908-687-5710

APPROVALS		DATE
DRAWN	HR	4/20/16
CHECKED	MW	4/20/16
APPROVED		

TITLE		
SMA JACK EDGE CARD MOUNT PCB, STRAIGHT		
SIZE	PART NO.	REV.
X	RF2-152-T-00-50-G-HDW	-
REF: S00277T	SCALE: NTS	SHEET 1 OF 1

6

5

4

3

2

1