



ANATECH ELECTRONICS INC
RF & Microwave Filters & Products

**915 MHz / 2435 MHz
Cavity Duplexer**

Part Number: AD915-2435D469

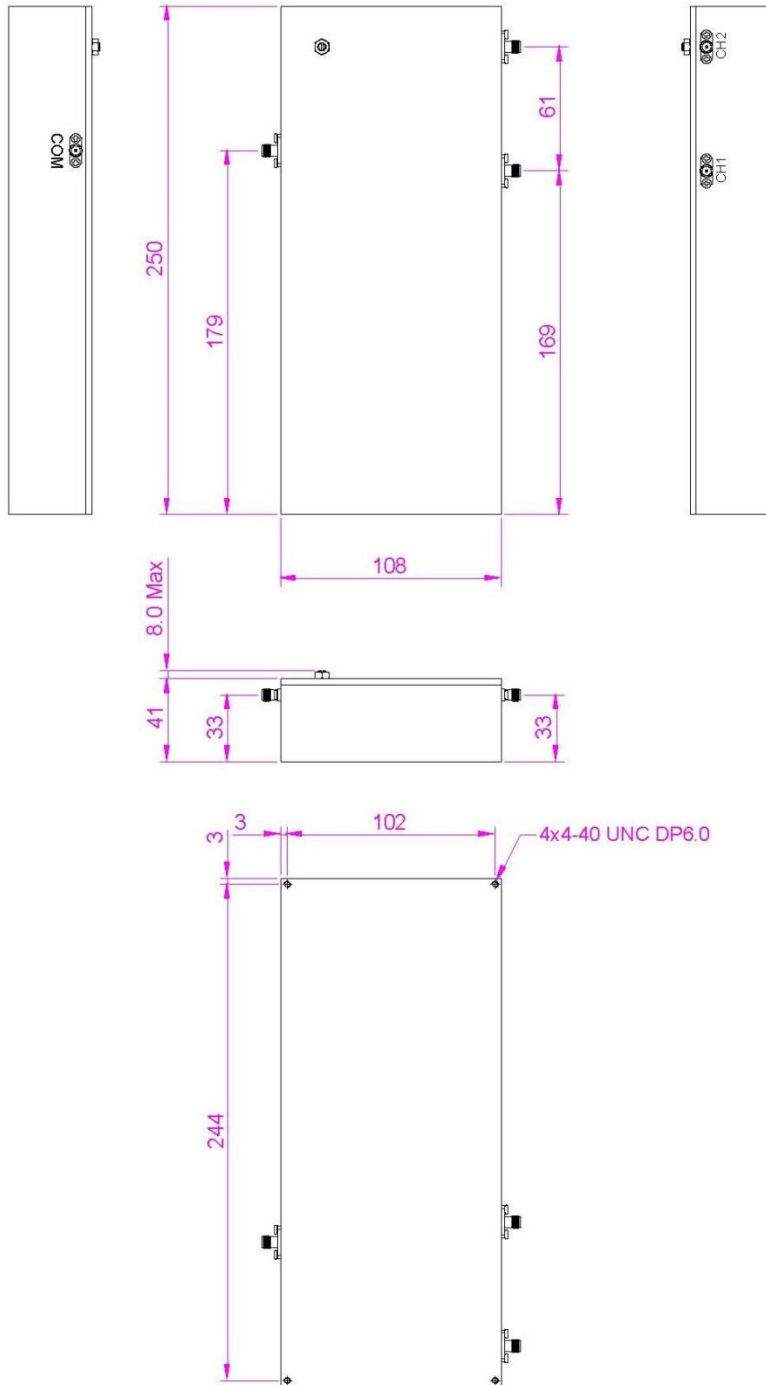


ELECTRICAL SPECIFICATION

	CH 1	CH 2
Frequency Range	902 ~ 928 MHz	2400 ~ 2470 MHz
Insertion Loss	1.5 dB Max	
Ripple	0.5 dB Max Peak to Peak	
VSWR	1.5:1 Max	
Rejection	>40dB @ 0~880 MHz >50dB @ 890 MHz >30dB @ 932 MHz >50dB @ 960~5000 MHz	>40dB @ 0~2370 MHz >40dB @ 2500~5000 MHz
Power Handling	2W CW Max	
In/Out Impedance	50 Ohms Nominal	
MECHANICAL		
Dimension	108 x 250 x 41 mm	
RF Connector	SMA (F)	
Finish	Black Color Epoxy Coating	
ENVIRONMENTAL		
Operating Temperature	-10 to +70°C	

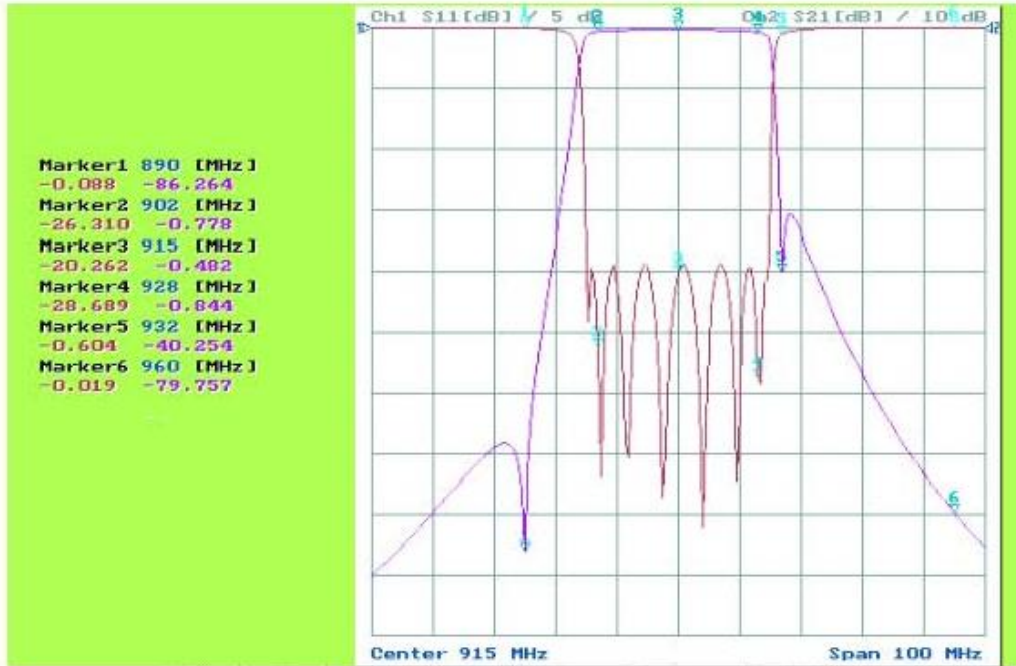


Outline Drawing:

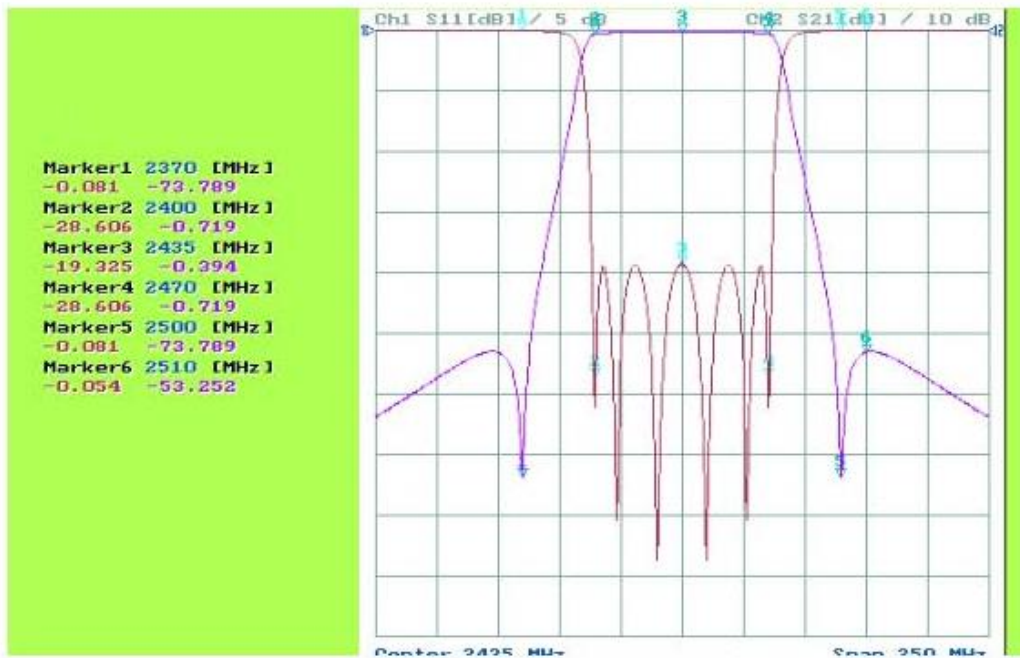




Response Plot:



CH1 : Return Loss and Insertion Loss, Ripple and Rejection



CH2 : Return Loss and Insertion Loss, Ripple and Rejection