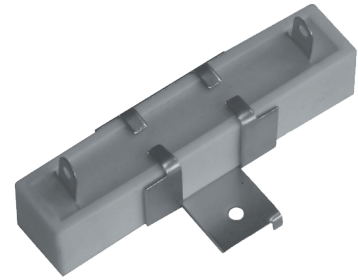


## Wirewound Power Radial Terminal Resistor

### WPRT Series

- 10 to 50 watts
- Quick connect or soldered tag terminals
- Optional mounting bracket
- High overload capability
- AEC-Q200 qualified
- Flameproof case
- RoHS compliant



All parts are Pb-free and comply with EU Directive 2011/65/EU amended by (EU) 2015/863 (RoHS3)

### Electrical Data

		WPRT10	WPRT15	WPRT20	WPRT30	WPRT40	WPRT50
Power rating at 25°C	watts	10	15	20	30	40	50
Power rating at 70°C	watts	10	12.3	16.4	24.6	32.8	41
5s overload rating at 25°C	watts	50	75	100	150	200	250
Resistance range	ohms	1R0 - 820R	1R0 - 1K0	2R0 - 1K2	3R0 - 1K5	6R0 - 1K5	6R0 - 1K5
Thermal impedance	°C/watt	18	14	12	8.5	7	7
Isolation voltage	volts	2000		3000		4000	
TCR	ppm/°C	<20R: ±400, ≥20R: ±350					
Resistance Tolerance	%	±5					
Standard Values		E24					
Ambient temperature range	°C	-55 to +155					

Note: No LEV applies. Maximum voltage (dc or rms) is  $\sqrt{P \times R}$

### Physical Data

Figure 1 - soldered tag (S) and the same with bracket (SB)

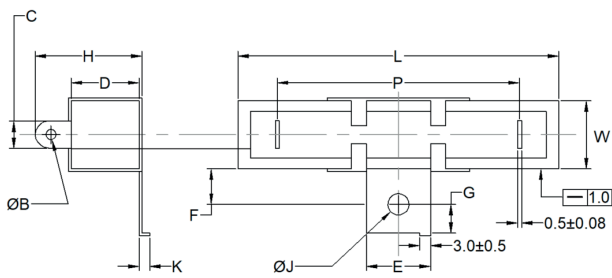
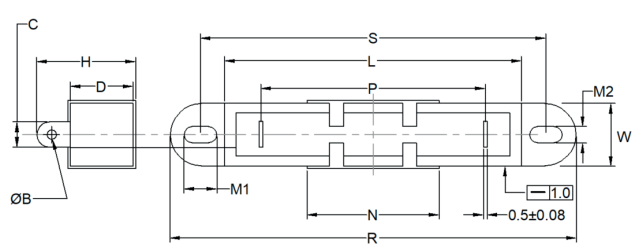


Figure 2 - soldered tag with rugged bracket (SR)



All dimensions in mm and weights in g Maximum bow on length and width <1.00mm

Type	L ±1.5	W ±1.0	D	P ±1.0	ØJ ±0.2	C ±0.4	ØB ±0.2	K ±1.0	F ±0.5	G ±0.5	E ±0.5	M1 ±0.1	M2 ±0.1	H ±1.0	N ±0.2	S ±0.3	R ±0.3	Weight (nom.)		
																		S	SB	SR
WPRT10	48	10	9.0±1.0	32	4.1	5.5	2.5	3.0	8.7	5.0	12	4.2	4.2	18	23	60	72	11	16.5	18.5
WPRT15	48	12.5	11.5±1.0	32	4.1	6.2	2.5	3.0	8.0	6.0	12	4.2	4.2	21	23	60	72	18	24	27.5
WPRT20	63	12.5	13.5±1.0	44	4.1	6.2	2.5	3.0	10.0	6.0	12	4.2	4.2	21	23	74	86.5	27	34	37.5
WPRT30	75	19	19±1.0	54	4.1	7.6	3.2	4.0	9.5	7.5	18	4.2	4.2	32	39	88	105	66	80	87.5
WPRT40	90	19	19±0.6	70	4.1	7.6	3.2	4.0	9.5	7.5	18	5.2	4.5	32	39	104	122	81	94	105.5
WPRT50	90	19	19±0.6	70	4.1	7.6	3.2	4.0	9.5	7.5	18	5.2	4.5	32	39	104	122	81	94	105.5

#### General Note

TT Electronics reserves the right to make changes in product specification without notice or liability. All information is subject to TT Electronics' own data and is considered accurate at time of going to print.

## WPRT Series

### Physical Data

Figure 3 - quick connect "amp" tag (A) and the same with bracket (AB)

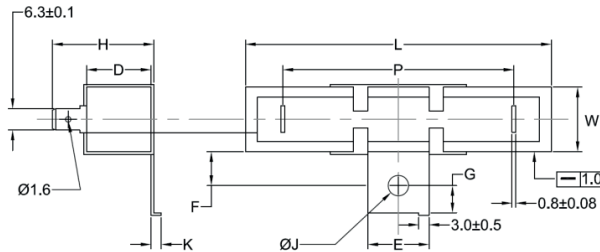
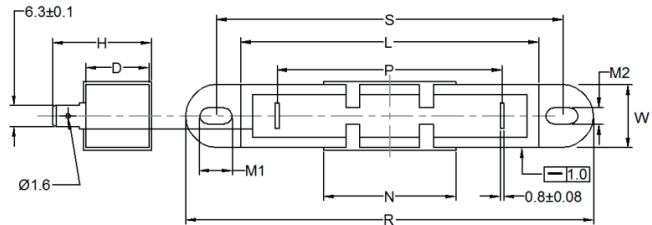


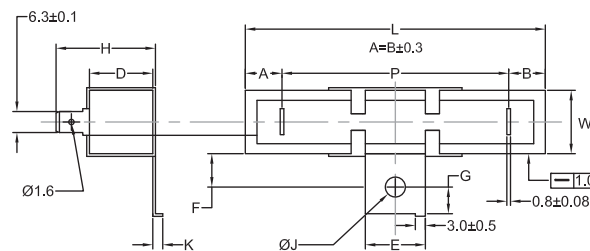
Figure 4 - quick connect "amp" tag with rugged bracket (AR)



All dimensions in mm and weights in g Maximum bow on length and width <1.00mm

Type	L ±1.5	W ±1.0	D	P ±1.0	ØJ ±0.2	K ±1.0	F ±0.5	G ±0.5	E ±0.5	M1 ±0.1	M2 ±0.1	H ±1.0	N ±0.2	S ±0.3	R ±0.3	Weight (nom.)		
																A	AB	AR
WPRT10	48	10	9.0±1.0	32	4.1	3.0	8.7	5.0	12	4.2	4.2	19	23	60	72	11	16.5	18.5
WPRT15	48	12.5	11.5±1.0	32	4.1	3.0	8.0	6.0	12	4.2	4.2	23.5	23	60	72	18	24	27.5
WPRT20	63	12.5	13.5±1.0	44	4.1	3.0	10.0	6.0	12	4.2	4.2	25	23	74	86.5	27	34	37.5
WPRT30	75	19	19±1.0	54	6.0	4.0	9.5	7.5	18	4.2	4.2	30	39	88	105	66	80	87.5
WPRT40	90	19	19±0.6	70	6.0	4.0	9.5	7.5	18	5.2	4.5	30	39	104	122	81	94	105.5
WPRT50	90	19	19±0.6	70	6.0	4.0	9.5	7.5	18	5.2	4.5	30	39	104	122	81	94	105.5

Figure 5 – as configuration A but with tighter tolerance terminal alignment (AT) and the same with bracket (AD)



All dimensions in mm and weights in g  
Maximum bow on length and width <1.00mm

Type	L +0.5/-1.0	W +0.5/-1.0	D	P ±0.3	ØJ ±0.2	K ±1.0	F ±0.5	G ±0.5	E ±0.5	H ±1.0	Weight (nom.)	
											AT	AD
WPRT10	48	10	9.0 ±1.0	32	4.1	3.0	8.7	5.0	12	19	11	16.5
WPRT15	48	12.5	11.5 ±1.0	32	4.1	3.0	8.0	6.0	12	23.5	18	24
WPRT20	63	12.5	13.5 ±1.0	44	4.1	3.0	10.0	6.0	12	25	27	34
WPRT30	75	19	19 ±1.0	54	6.0	4.0	9.5	7.5	18	30	66	80
WPRT40	90	19	19 ±0.6	68	6.0	4.0	9.5	7.5	18	30	81	94
WPRT50	90	19	19 ±0.6	68	6.0	4.0	9.5	7.5	18	30	81	94

#### General Note

TT Electronics reserves the right to make changes in product specification without notice or liability.  
All information is subject to TT Electronics' own data and is considered accurate at time of going to print.

## WPRT Series

### Construction

A high purity ceramic rod, with force fit end caps onto which is wound a wire element. The element is fitted into a ceramic case with fireproof insulation cement. The terminal material is tin plated steel.

	Name	Main Material	
	1	Rod	$Al_2O_3$
	2	Filling Material	$SiO_2$
	3	Ceramic Case	$Al_2O_3$ CaO
	4	Terminal	Steel (tin plated)
	5	Bracket	Steel
	6	Wire Element	Resistance Alloy

**Termination Strength:** The terminations meet the requirements of IEC 86.2.21

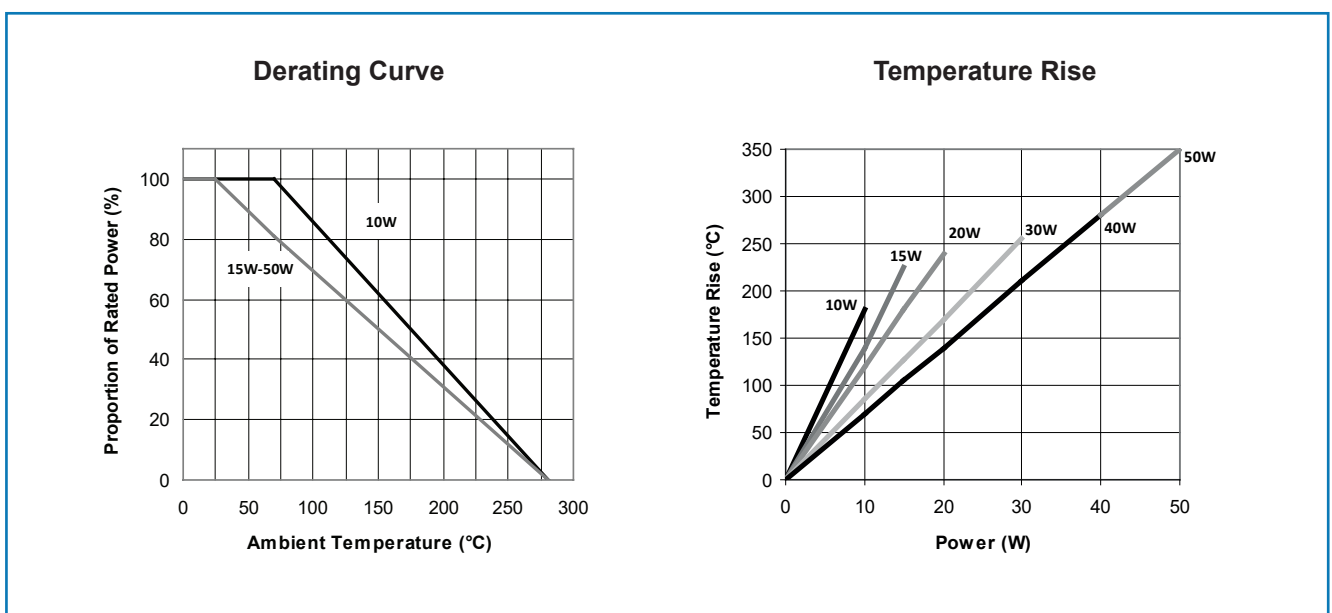
**Marking:** Power rating, resistance value and tolerance are legend marked.

**Flammability:** The resistor will not burn under any condition of applied temperature or overload.

**Solvent resistance:** The body protection and marking are resistant to all normal industrial solvents suitable for printed circuits.

## Performance Data

		Maximum
Load at rated power (1000hrs at 25°C and 70°C)	$\Delta R\%$	5
Derating from rated power		Zero at 275°C (see graph)
Short term overload (5 x rated power)	$\Delta R\%$	5 + 0.05 $\Omega$
Damp heat steady state (56 days, 40°C, $\geq 90\%$ RH)	$\Delta R\%$	5 + 0.05 $\Omega$
Temperature rapid change (5 cycles -55°C to +155°C)	$\Delta R\%$	2 + 0.05 $\Omega$
Resistance to solder heat	$\Delta R\%$	1 + 0.05 $\Omega$
Voltage Proof (1kV for 60s)		No flashover, mechanical damage, arcing or breakdown
Solderability		Min. 95% coverage



### General Note

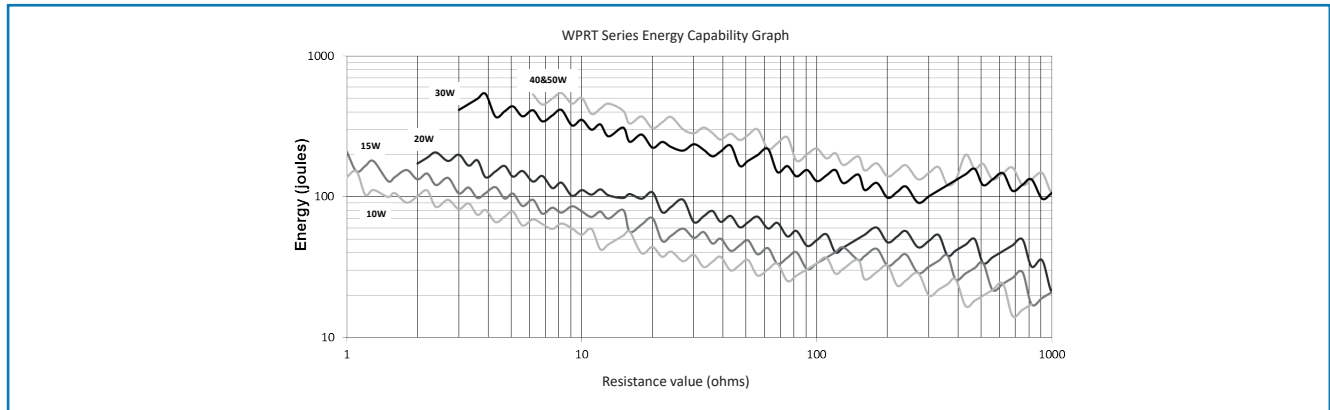
TT Electronics reserves the right to make changes in product specification without notice or liability.

All information is subject to TT Electronics' own data and is considered accurate at time of going to print.

## WPRT Series

### Pulse Performance

The pulse energy capacity limits in the graph below relate to pulses below 100ms duration based on an instantaneous wire temperature rise of 750°C.



### Application Notes

S, SR and SB configurations have terminals which can be soldered. However, for full power operation, due to the possibility of high terminal temperatures, it is recommended that the connections be secured mechanically, rather than relying on the solder joint alone.

AT and AD configurations are designed for use in molded housing assemblies, where the alignment of terminals and the body dimensions must be defined to a greater tolerance.

SR and AR configurations have a bracket with two fixing points rather than one, and are ideal for high shock & vibration applications.

### Ordering Procedure

**Example: WPRT50AB-1K2JB168** (WPRT50, quick connect “amp” tag with bracket, 1.2 kilohms ±5%, Pb-free)



1 Type	2 Configuration			3 Value	4 Tolerance	5 Packing				
WPRT10	S	Soldered tag, no bracket		E24 = 3/4 characters R = ohms K = kilohms	J = ±5%	Bulk pack				
WPRT15		Fig. 1				B440	WPRT10	S, SB, A, AB, AT, AD	440/box	
WPRT20			Soldered tag with bracket			B330		SR, AR	330/box	
WPRT30	SB					B400	WPRT15	S, SB, A, AB, AT, AD	400/box	
WPRT40	SR	Soldered tag, rugged bracket		B300	SR, AR	300/box				
WPRT50				B270	WPRT20	All configurations	270/box			
	A	“Amp” tag, no bracket		Fig. 3	B240	WPRT30,	S, A, AT	240/box		
	AB	“Amp” tag with bracket			B168	WPRT40,	SB, AB, AD	168/box		
	AR	“Amp” tag, rugged bracket		Fig. 4	B160	WPRT50	SR, AR	160/box		
	AT	“A” with tighter tolerances			Fig. 5					
	AD	“AB” with tighter tolerances								

#### General Note

TT Electronics reserves the right to make changes in product specification without notice or liability. All information is subject to TT Electronics’ own data and is considered accurate at time of going to print.