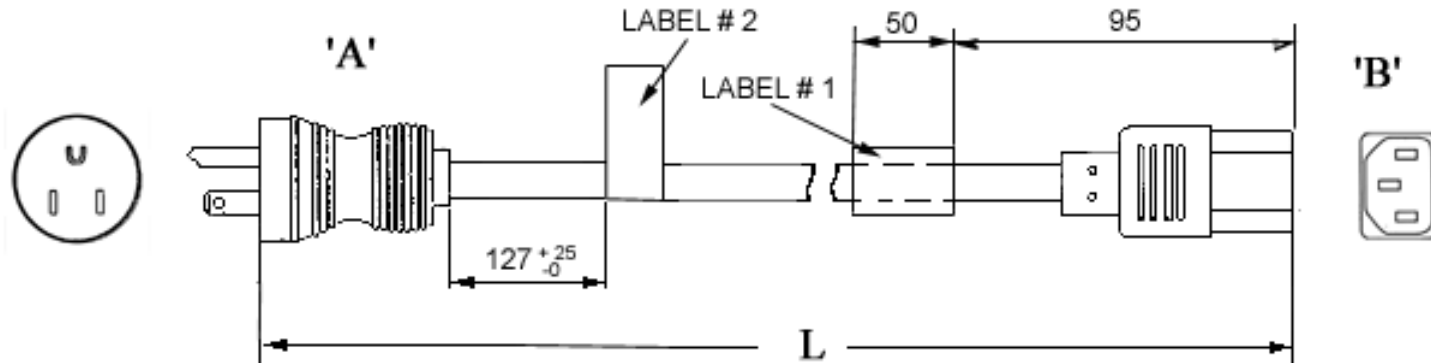


PROPRIETARY INFORMATION:
 PROPRIETARY OF GLOBTEK, INC. ANY REPRODUCTION, DISCLOSURE OR
 USE OF THIS DRAWING, IN WHOLE OR IN PART, IS HEREBY
 PROHIBITED EXCEPT AS SPECIFIED IN WRITING BY GLOBTEK,INC.

REVISION			
REV	DESCRIPTION	DATE	APPROVED
A	INITIAL RELEASE	02/07/02	BS
B	REDRAWN	12/18/02	BS
C	CORRECTION (CUSTOMER DWG. INCORRECT)	03/14/03	BS

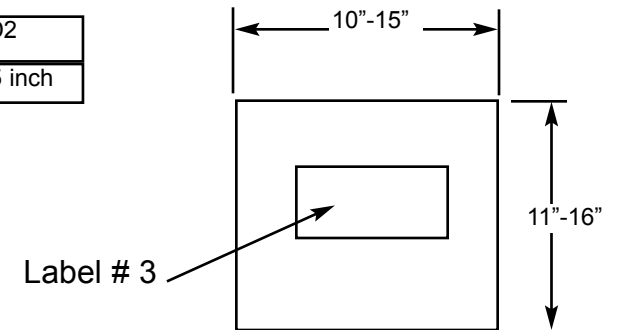
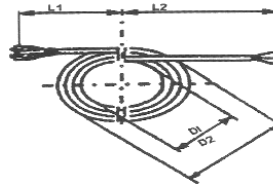


GENERAL SPECIFICATIONS:

RATING: 15A / 125V AC
 CABLE TYPE / SIZE: SJT, 14 AWG X 3
 TEMPERATURE RATING: 60° C
 CONDUCTOR COLORS: BLUE / BROWN / GRN-YEL
 CABLE JACKET COLOR: BLACK
 OVERALL LENGTH (L): 3700 ± 20 MM (12 Ft)
 CABLE OUTER DIAMETER: 9.5 ± 0.2 MM
 END 'A' TERMINATION: MEDICAL GRADE NEMA 5-15P
 WITH GREEN DOT
 END 'B' TERMINATION: IEC 320 / C13
 APPROVALS PLUG: UL, CSA
 APPROVALS CABLE: UL, CSA

PACKING:
 COILED

L1 (A End)	L2 (B End)	D1 / D2
0	0	10 / 15 inch



NOTES:

1. CORD, PLUG AND CONNECTOR MUST BE MARKED WITH APPROVAL SYMBOLS OR FILE NUMBER(S).



2. SAFETY TESTING:

ALL CORDSETS MUST BE IN ACCORDANCE WITH THE FOLLOWING REQUIREMENTS:
A. MAXIMUM L-N TO EARTH LEAKAGE CURRENT AT 264 VAC IS 40 µA
B. MAXIMUM GROUND IMPEDANCE AT 30A, 12-VAC IS 0.1ohms
C. 1500VAC WILL DIELECTRIC WITHSTAND.
D. TEST REPORT WILL ACCOMPANY EACH SHIPMENT.

NOTE:

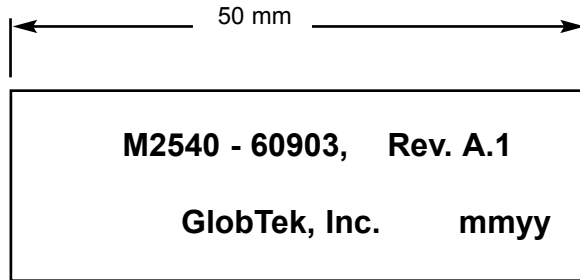
CORDSETS ARE TO BE COILED (10" TO 15" DIAMETER)AND INDIVIDUALLY PACKAGED INTO HEAT-SEALED BAGS.

DASH NO.	PART NO	REV.	DESCRIPTION	NOTES
TABULATION BLOCK				
REV.	C	C		
SHEET	1	2		
INIT.BY: BS	DATE: 12/18/02	TOLERANCES: DECIMALS .xx +/- 0.1 ANGULAR +/- 1° .xxx +/- .005 MILLIMETERS .xx +/- 0.3 ANGULAR +/- 1° .xxx +/- .013		GlobTek, Inc. 186 Veterans Dr. Northvale, NJ 07647 Tel. 201-784-1000 Fax 201.784.0111 www.globtek.com
DRAWN: NF	DATE: 12/18/02	FSCN No.: G, CC	SIZE A	
APRVD: BS	DATE: 12/18/02	SCALE: NONE	MODEL: N / A	REV. C
			PART NO: 11910412F701-1	SHEET 1/2

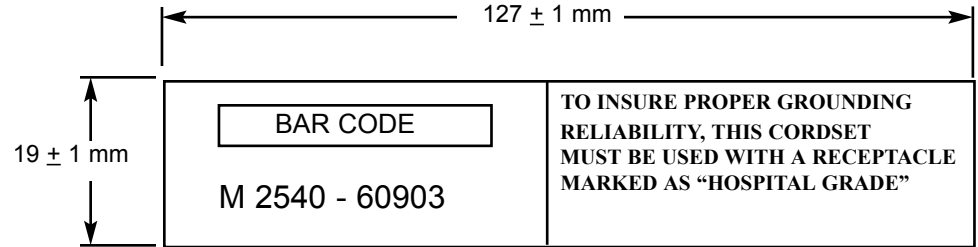
PROPRIETARY INFORMATION:
 PROPRIETARY OF GLOBTEK, INC. ANY REPRODUCTION, DISCLOSURE OR
 USE OF THIS DRAWING, IN WHOLE OR IN PART, IS HEREBY
 PROHIBITED EXCEPT AS SPECIFIED IN WRITING BY GLOBTEK, INC.

REVISION			
REV	DESCRIPTION	DATE	APPROVED
A	INITIAL RELEASE	02/07/02	BS
B	REDRAWN	12/18/02	BS
C	CORRECTION (CUSTOMER DWG. INCORRECT)	03/14/03	BS

LABEL # 1



LABEL # 2



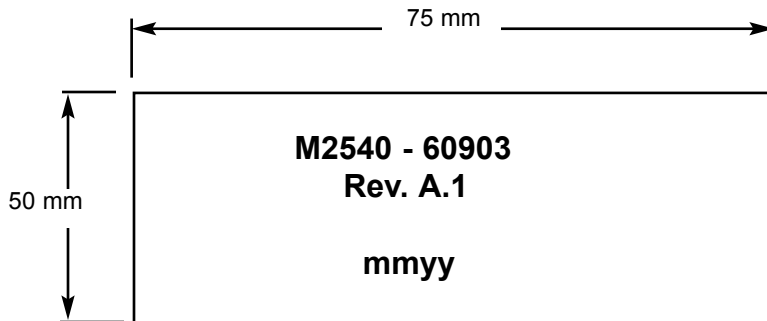
NOTES:


1. BLACK PRINTING ON WHITE LABEL.
2. "mmyy" - MONTH AND YEAR OF MANUFACTURE.
3. NEAR EDGE OF LABEL IS LOCATED 95 mm AWAY FROM END OF THE FEMALE CONNECTOR.

NOTES:

1. PERMANENTLY ATTACHED FLAG LABEL.
2. BASE MATERIAL: WHITE POLYVINYL CHLORIDE, 0.05 mm THICK WITH PERMANENT, PRESSURE SENSITIVE ADHESIVE ON ONE SIDE.
3. BAR CODE IS "CODE 39" ENCODING OF PART NUMBER "M2540 - 60903".
4. PRINTING: TEXT IS PRINTED IN PERMANENT BLACK INK, LETTER HEIGHT IS 2.6 mm MINIMUM.

LABEL # 3



DASH NO.	PART NO	REV.	DESCRIPTION	NOTES
TABULATION BLOCK				
REV.	C	C		
SHEET	1	2		
INIT. BY: FS	DATE: 12/18/02	TOLERANCES: DECIMALS ANGULAR .xx +/- 0.1 +/- 1° .xxx +/- .005		 GlobTek, Inc. www.globtek.com 186 Veterans Dr. Northvale, NJ 07647 Tel. 201-784-1000 Fax 201.784.0111
DRAWN: NF	DATE: 12/18/02	MILLIMETERS ANGULAR .xx +/- 0.3 +/- 1° .xxx +/- .013	FSCN No.: G, CC	
APRVD: BS	DATE: 12/18/02	SCALE: NONE	MODEL: N / A	REV. C
			PART NO: 11910412F701-1	SHEET 2/2

GlobTek, Inc.
 www.globtek.com
 186 Veterans Dr. Northvale, NJ 07647
 Tel. 201-784-1000 Fax 201.784.0111

DWG TITLE: MEDICAL GRADE NORTH AMERICAN DETACHABLE CORDSET