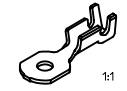


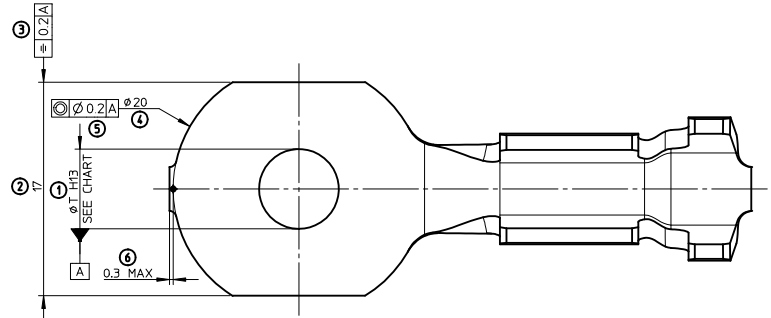
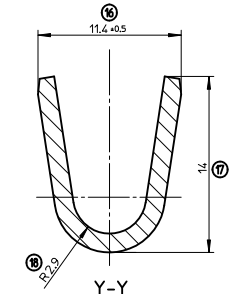
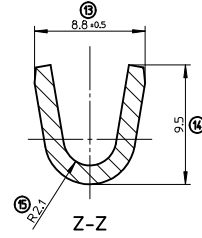
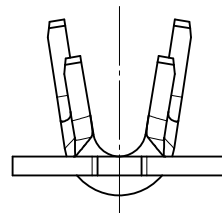
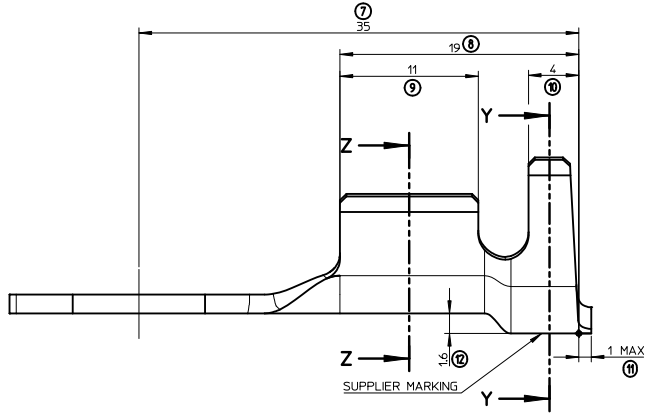
8,25	0988611279	8.600
6,25	0988611179	8.800
Ø TH13 (+0.200)	P/N	WEIGHT (g)

- NOTES:**
- 1 - MATERIAL : BRASS THICKNESS 15 MM (6)
  - 2 - PLATING : POST-TIN PLATED
  - 3 - PART WEIGHT : SEE CHART
  - 4 - CRIMPING RANGE (MM2) : 7 TO 13
  - 5 - PACKAGING : PARTS DELIVERED ON LOOSE



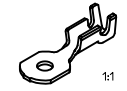
INSPECTION BALLOON NUMBER LOG	
PER DRAWING REVISION: A	
LAST BALLOON NUMBER USED: 19	
ADDED BALLOON NUMBERS: NONE	
REMOVED BALLOON NUMBERS: NONE	

FIRST RELEASE EC NO: G2012-0985 DRW:PBOSQUAIN 2012/04/19 CHKD:TDATAZOUT 2012/04/19 APPR:OPLESSIS 2012/05/11	QUALITY SYMBOLS ▽-0 ▽-1 ▽-2	GENERAL TOLERANCES (UNLESS SPECIFIED)	DIMENSION STYLE MM ONLY	SCALE 5:1	DESIGN UNITS METRIC	FIRST ANGLE PROJECTION
		mm INCH	DRAWN BY PBOSQUAIN	DATE 2012/04/19	TITLE RING TERMINAL 6.25 AND 8.25X17X1.5 7-13	
REV	DESCRIPTION	4 PLACES ± --- ± ---	CHECKED BY TDATAZOUT	DATE 2012/04/19	APPROVED BY OPLESSIS	
		3 PLACES ± --- ± ---	DATE 2012/05/03		MATERIAL NO.	
		2 PLACES ± --- ± ---	DATE		DOCUMENT NO. SD-98861-002	
		1 PLACE ± 0.3 ± ---	DATE		SHEET NO. 1 OF 1	
		0 PLACE ± 0.3 ± ---	DATE		THIS DRAWING CONTAINS INFORMATION THAT IS PROPRIETARY TO MOLEX INCORPORATED AND SHOULD NOT BE USED WITHOUT WRITTEN PERMISSION	
		ANGULAR ± --- °	DATE		SEE CHART	
		DRAFT WHERE APPLICABLE MUST REMAIN WITHIN DIMENSIONS	DATE		SIZE A1	



8,25	0988611279	8.600
6,25	0988611179	8.800
∅ T H13 (+0.220)	P/N	WEIGHT (g)

- NOTES:**
- 1 - MATERIAL : BRASS THICKNESS 15 MM (6)
  - 2 - PLATING : POST-TIN PLATED
  - 3 - PART WEIGHT : SEE CHART
  - 4 - CRIMPING RANGE (MM2) : 7 TO 13
  - 5 - PACKAGING : PARTS DELIVERED ON LOOSE



INSPECTION BALLOON NUMBER LOG	
PER DRAWING REVISION: A	
LAST BALLOON NUMBER USED: 19	
ADDED BALLOON NUMBERS: NONE	
REMOVED BALLOON NUMBERS: NONE	

FIRST RELEASE EC NO: G2012-0985 DRW: PBOSQUAIN 2012/04/19 CHKD: TDATAZOUT 2012/04/19 APPR: OPLESSIS 2012/05/11	QUALITY SYMBOLS ▽-0 ▽-1 ▽-2	GENERAL TOLERANCES (UNLESS SPECIFIED) mm INCH	DRAWN BY	DATE	TITLE
			PBOSQUAIN	2012/04/19	RING TERMINAL 6.25 AND 8.25X17X1.5 7-13
			CHECKED BY	DATE	
			TDATAZOUT	2012/04/19	
			APPROVED BY	DATE	
			OPLESSIS	2012/05/03	
		ANGULAR ±	MATERIAL NO.	DOCUMENT NO.	SHEET NO.
		DRAFT WHERE APPLICABLE MUST REMAIN WITHIN DIMENSIONS	SEE CHART	SD-98861-002	1 OF 1
			THIS DRAWING CONTAINS INFORMATION THAT IS PROPRIETARY TO MOLEX INCORPORATED AND SHOULD NOT BE USED WITHOUT WRITTEN PERMISSION		

SCALE 5:1 DESIGN UNITS METRIC FIRST ANGLE PROJECTION

A FIRST RELEASE