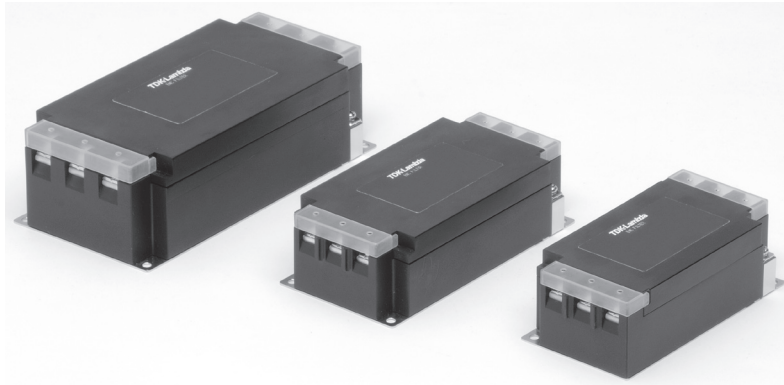


## RTCN SERIES

Filter Exclusively for Secondary Side Three-Phase Inverter with Many Current Variations



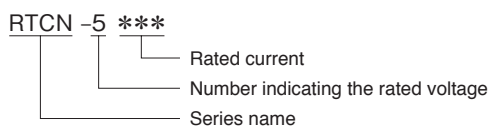
### FEATURES

- 6 to 300A wide range lineup.
- Small due to L1, light and thin.
- Low-profile design.
- Self-tightening screws and an open/close type cover make wiring work easier.
- Terminal block cover included for safety.

### SAFETY STANDARDS

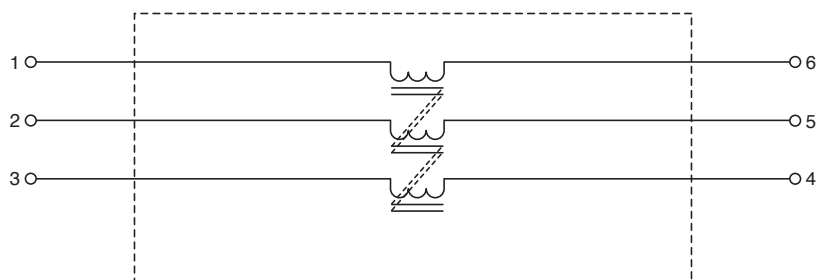
UL1283	UL File No. E62388 (Up to 150A)
EN60939-1/-2 (ENEC14)	Licence Ref. No. SE/07115-5 (Up to 60A)
	Licence Ref. No. SE/07115-4 (From 80A)

### PRODUCT IDENTIFICATION



### CONFORMITY TO RoHS Directive

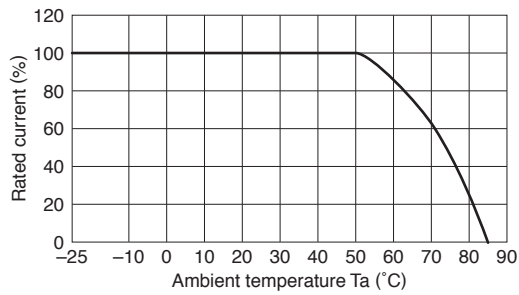
### CIRCUIT DIAGRAM



**ELECTRICAL CHARACTERISTICS**

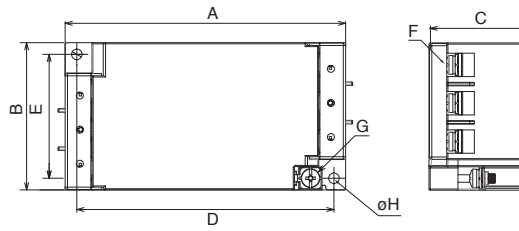
Part No.	Rated voltage (AC/DC)	Rated current (AC/DC)	Withstand voltage	Insulation resistance	Leakage current	Operating temperature range	With derating over	DC resistance (mΩ)	Attenuation frequency range (MHz)		Weight (kg)
									Common mode		
									at 10dB	at 5dB	
RTCN-5006	500V	6A	AC.2500V 60s [Between line to ground]	100MΩ min. [DC.500V/ 1min]	-	-25 to +85°C	50°C	145 max.	0.1 to 5	-	0.30
RTCN-5010		10A						60 max.	0.1 to 5	-	0.30
RTCN-5020		20A						25 max.	0.1 to 5	-	0.49
RTCN-5030		30A						13 max.	0.2 to 4	-	0.49
RTCN-5040		40A						10 max.	0.2 to 3	-	0.96
RTCN-5050		50A						7 max.	-	0.2 to 3	0.90
RTCN-5060		60A						5 max.	-	0.2 to 3	0.90
RTCN-5080		80A						5 max.	-	0.1 to 3	3.60
RTCN-5100		100A						4 max.	-	0.1 to 3	3.90
RTCN-5150		150A						3 max.	-	0.1 to 3	6.20
RTCN-5200		200A						4 max.	-	-	8.90
RTCN-5250		250A						3 max.	-	-	8.40
RTCN-5300		300A						2 max.	-	-	8.00

**DERATING GRAPH**

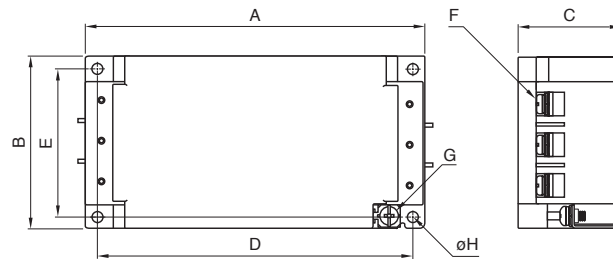


MECHANICAL

RTCN-5006/5010



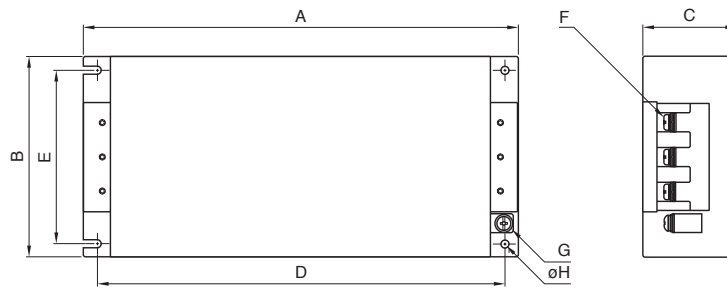
RTCN-5020/5030/5040/5050/5060



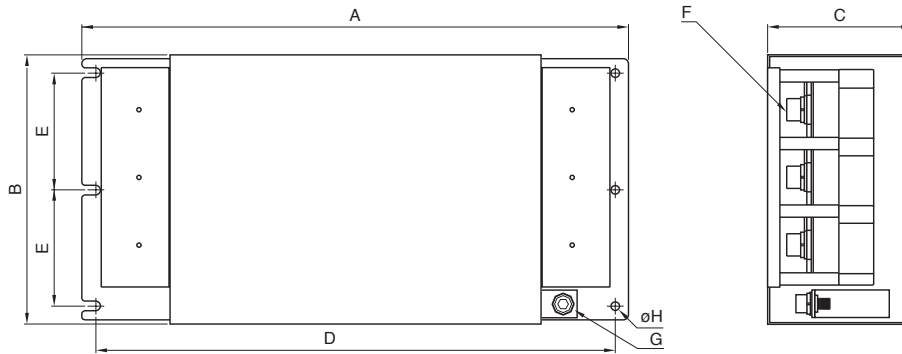
Dimensions in mm

Part No.	A	B	C	D	E	F	G	φ H	Recommended clamping torque
RTCN-5006	120	63	42	110	53	M4	M4	4.5	M4 : 1.27N · m M5 : 2.5N · m
RTCN-5010									
RTCN-5020	140	70	42	130	60	M4	M4		
RTCN-5030									
RTCN-5040	170	90	54	160	80	M5	M4	4.5	
RTCN-5050									
RTCN-5060									

RTCN-5080/5100/5150



RTCN-5200/5250/5300

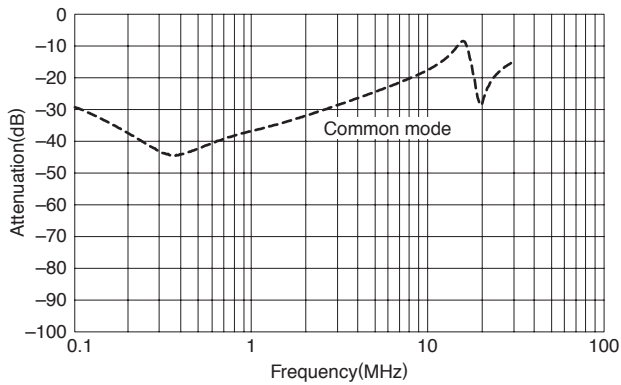


Dimensions in mm

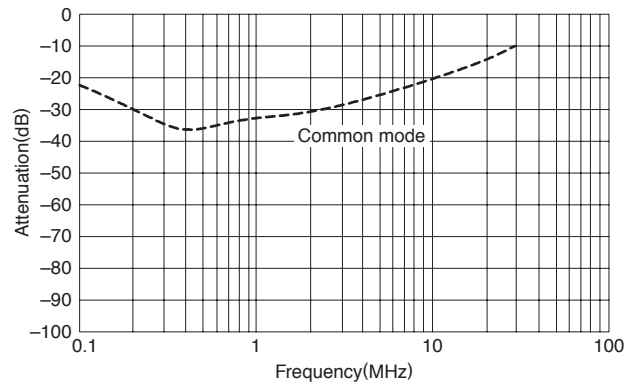
Part No.	A	B	C	D	E	F	G	φH	Recommended clamping torque
RTCN-5080	267	161	85	247	135	M8	M6	6.5	M6 : 4.8N · m M8 : 7.64N · m M10 : 11.8N · m
RTCN-5100									
RTCN-5150	290	190	88	270	164	M8	M6	6.5	
RTCN-5200	390	195	103	370	84.5	M10	M8	6.5	
RTCN-5250									
RTCN-5300									

■ ATTENUATION vs. FREQUENCY CHARACTERISTICS

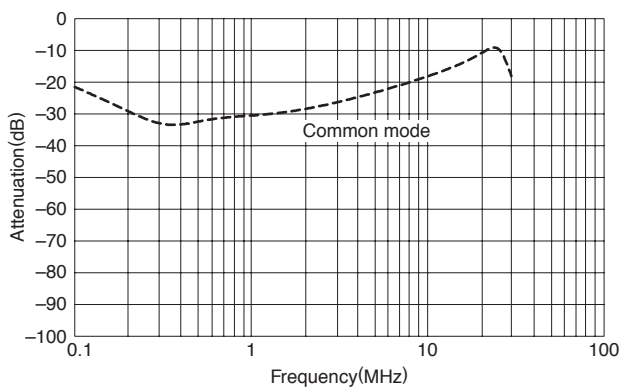
RTCN-5006



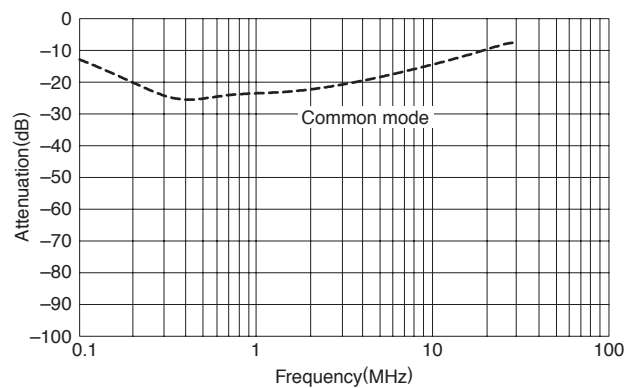
RTCN-5010



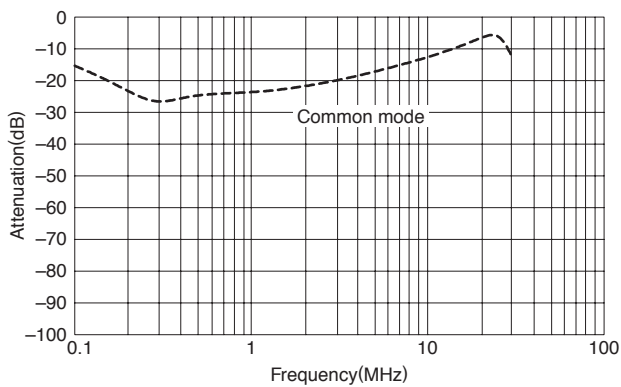
RTCN-5020



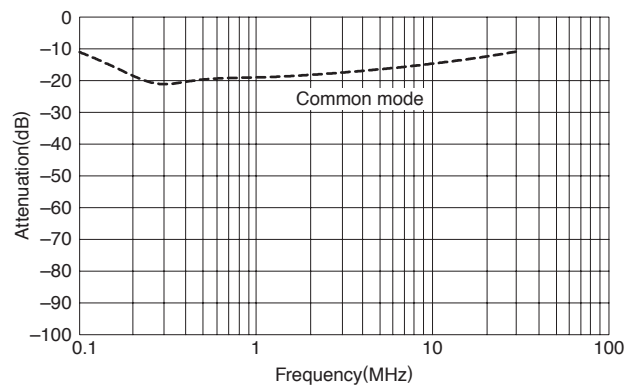
RTCN-5030



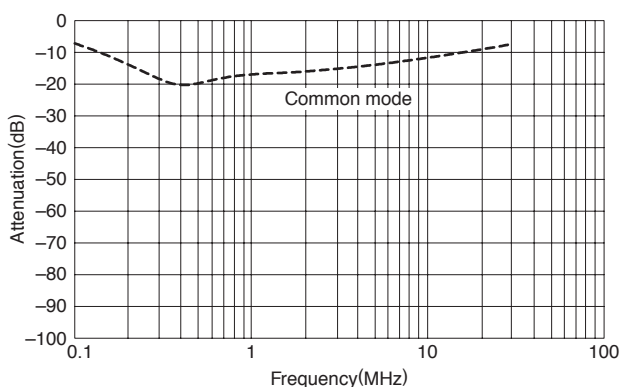
RTCN-5040



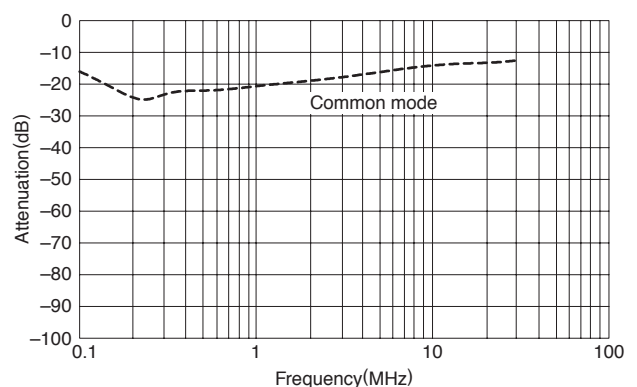
RTCN-5050



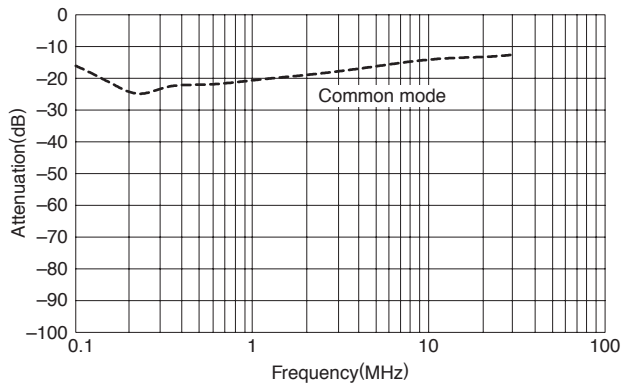
RTCN-5060



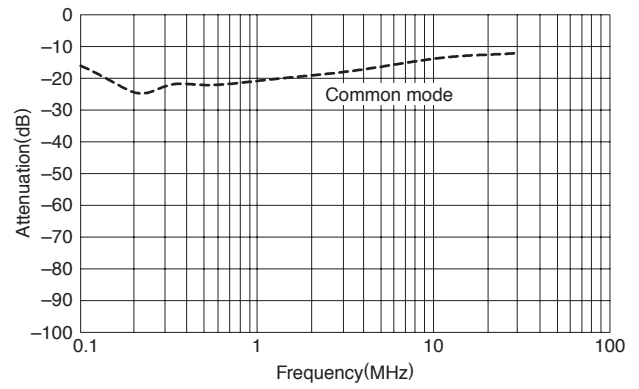
RTCN-5080



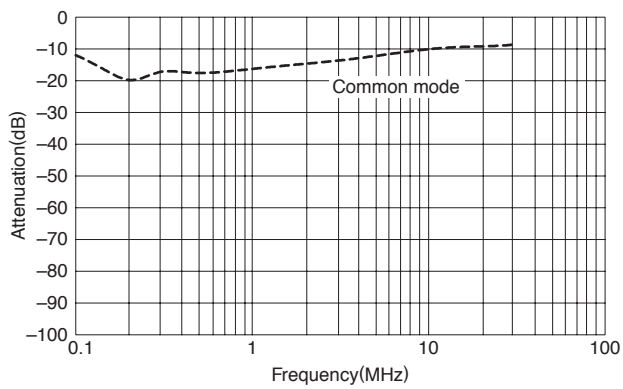
RTCN-5100



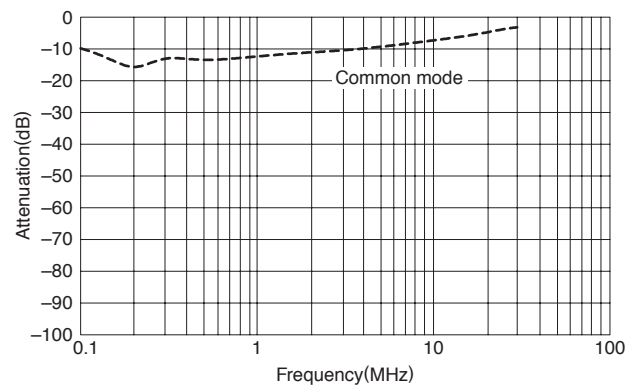
RTCN-5150



RTCN-5200



RTCN-5250



RTCN-5300

