



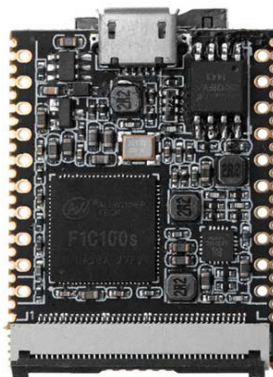
# Lichee Nano Linux Dev. Board 16M Flash+WiFi Version



Breadboard Friendly | Small but Powerful | Pluggable and SMT-able

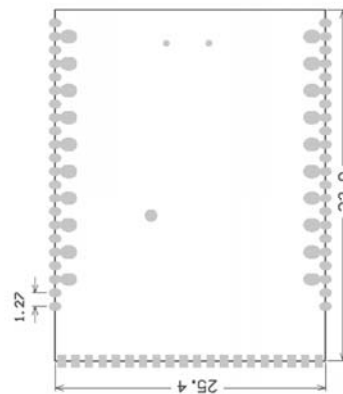
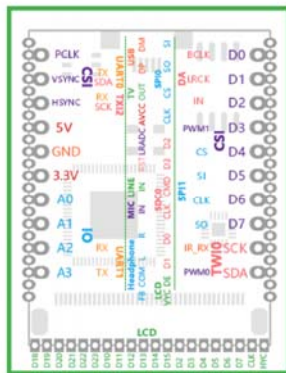
**DESCRIPTION** SKU 102110201

Lichee Nano is an SD Card Sized Linux Development Board Powered by Allwinner F1C100s ARM9 Processor



## Features/Specifications

- Allwinner F1C100s, ARM 926EJS processor, up to 900MHz
- 32MB DDR integrated into SoC, 16MB SPI Flash
- Onboard TF Slot, can be boot from TF Card,
- 40-pin RGB LCD FPC connector supporting 272×480, 480×800, 1024×600 and other resolutions resistive displays (and capacitive displays through the adapter board).
- Support 720P video output, support video stream decoding such as H.264 / MPEG
- SDIO for WiFi module
- SPI x2, TWI x3, UART x3
- OTG USB x1, TV out
- PWM x2, LRADC x1
- Headphone output x2, Mic x1



- Input 5V via micro USB port, 3.3 to 5V via pin
- Output – 3.3V, selectable input RTC voltage
- Power Consumption – 54mA (idle) with Linux, 250mA with display
- Storage Temperature: -40~125°C; operating: -20 to 70°C

## Software and development environment

- Support 3.10 BSP linux,
- Support 4.19 mainline linux,
- Support xboot bare metal development environment
- Support RT-Thread

## Target application scenario:

- IoT applications using more complex communication interfaces and protocols
- The application of human-computer interaction interface that needs more beautiful and complex logic
- Application scenarios that require more operations (as opposed to common MCUs)
- Need to use open source software under Linux for rapid development scenarios
- High-end geek players balance in size, performance and ease of use.
- Entry level player, software engineer, hardware diy using familiar language

Size and weight	
Core board size	25.4x33.0mm
Core board weight	4.2±0.2g
Precautions	
start up	Nano needs card boot (or solder SPI flash), only plug in USB without any phenomenon
System debug serial port	UART0, specific position reference pin diagram
USB interface	OTG usb, power and communication

Operating temperature	-20~70°C
Part List	
Lichee Nano	x1
WiFi Module	x1
OTG	x1

### **ECCN/HTS**

ECCN	3A991.a
HSCODE	8517709000