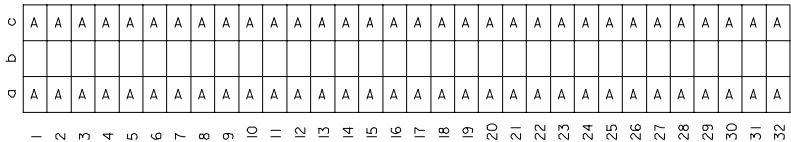


20 19 18 17 16 15 14 13 12 11 9 8 7 6 5 4 3 2 1

VIEW ON MATING SIDE



A = 64 STANDARD CONTACTS L = 13.3

MARKING	STANDARD
PERFORMANCE LEVEL	G2/0 = CONTACT AREA PERFORM. LEVEL 2 / TERMINATION TIN
FLUX PROOF	NO
FIXING CLIP	NO
DIMENSIONS	SD-85013-0001 SHT 1

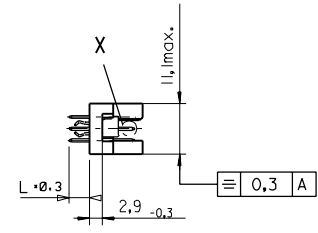
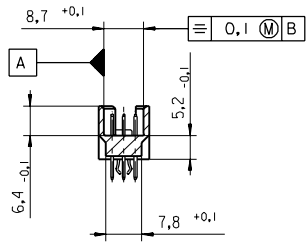
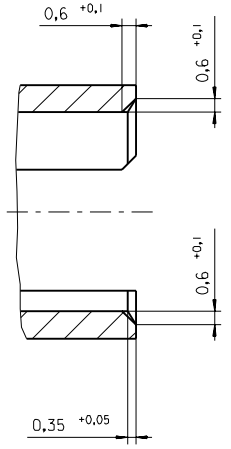
A	G2/0	a1-32	a1-32
CONTACT SYMBOL	PERFORMANCE LEVEL	CONTACT POSITION NUMBER	

EC No. I 2004-XXXX DRAWN N.S. 31/03/04 CHK'd G.L. 31/03/04 APPR. G.L. 31/03/04		QUALITY SYMBOLS	GENERAL TOLERANCES: (UNLESS SPECIFIED): 4 PLACES ±0.1 ±.1 3 PLACES ±0.1 ±.1 2 PLACES ±0.1 ±.1 1 PLACE ±0.1 ±.1	SCALE	DESIGN UNITS	THIRD ANGLE PROJECTION DIM INCH INCH DIM INCH INCH DIM ONLY	DIMENSIONS: <input type="checkbox"/> INCH <input type="checkbox"/> DIM ONLY <input type="checkbox"/> DIM ONLY <input type="checkbox"/> DIM ONLY	SHT 1 REV REVISE ON CAD ONLY
		MAJOR CRITICAL		DRAWN BY & DATE	NLS. 22/04/02			
DESCRIPTION		TITLES: 96 POS MALE CONNECTOR ACCORDING DIN 41612 STYLE R CONTACTS ARRANGEMENT						
B		CAD FILENAME: S850131677.S01 MATERIAL NO.: 85013-1677 DRAWING NO.: SD-85013-1677 SHEET NO.: 1 OF 1						
REV		DRAFT WHERE APPLICABLE MUST REMAIN WITHIN DIMENSIONS THIS DRAWING CONTAINS INFORMATION THAT IS PROPRIETARY TO MOLEX INCORPORATED AND SHOULD NOT BE USED WITHOUT WRITTEN PERMISSION.						

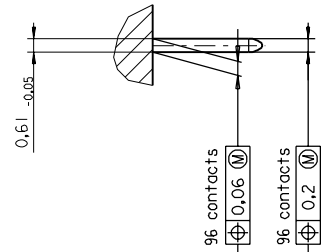
19 18 17 16 15 14 13 12 11 10 9 8 7 6 5 4 3 2 1

PART NO.
DWG. NO.

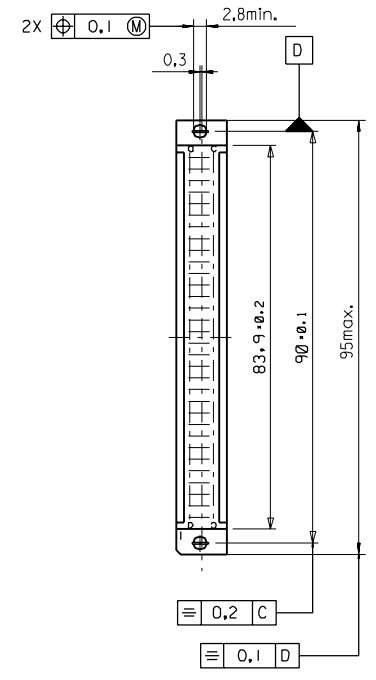
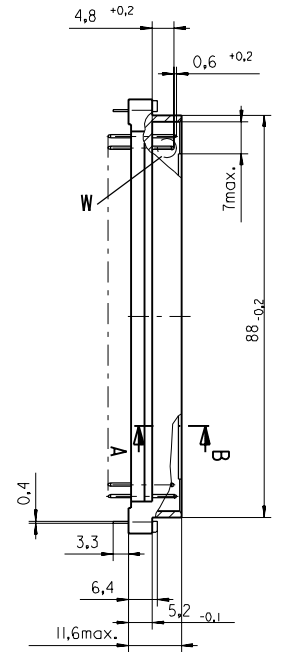
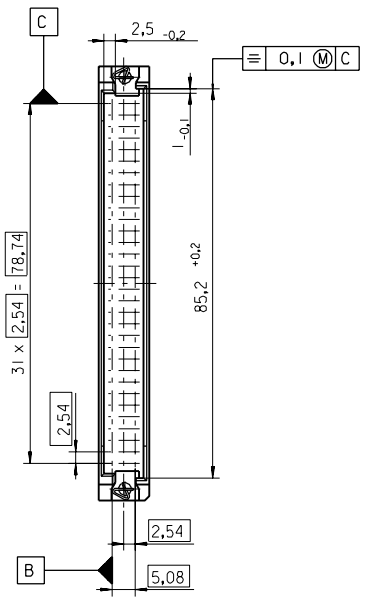
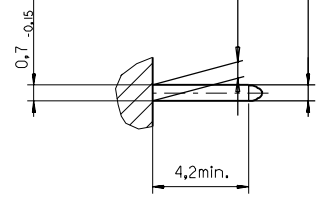
Section A - B
5:1



View X
5:1



View W
5:1



FIRST ANGLE PROJECTION		REVISE ONLY ON CAD SYSTEM		SH.	REV.
UNLESS OTHERWISE SPECIFIED TOLERANCES: ANGULAR $\pm 2^\circ$		DRWG BY	SIGN	CAD/CAM PROJECT NAME	
INCH METRIC		Ca		85013000 611	
3 PLACE \pm . \pm		CHK'D BY	SIGN	TITLE	
2 PLACE \pm . \pm		KN		96 pos. Male connector acc. DIN 41612 Style R Dimensions	
1 PLACE \pm . \pm		APP'D BY	SIGN	SHEET NO. DATE	
DRAFT WHERE APPLICABLE MUST REMAIN WITHIN DIMENSIONS				1 OF 95/06/07	
DESIGN DIMENSION <input checked="" type="checkbox"/> MM		SCALE		MOLEX EUROPE	
EQUIVALENT DIMENSION <input type="checkbox"/> MM		: 1		PART NO. DWG NO.	
IF TWO DIMENSIONS ARE SHOWN THE UPPER IS THE DESIGN DIMENSION, LOWER IS SECONDARY				SDA-85013-0001	
first release see ECN No. 1887				SIZE	
A				B	

View on mating side

○	A	A	A	A	A	A	A	A	A	A	A	A	A	A	A	A	A	A	A	A
△																				
○	A	A	A	A	A	A	A	A	A	A	A	A	A	A	A	A	A	A	A	A

▽ ◁ ▷ ↻ ↷ ↸ ↹ ↺ ↻ ↼ ↽ ↾ ↿ ⊖ ⊗ ⊙ ⊚ ⊛ ⊜ ⊝ ⊞ ⊠ ⊡ ⊢ ⊣ ⊤ ⊥ ⊦ ⊧ ⊨ ⊩ ⊪ ⊫ ⊬ ⊭ ⊮ ⊯ ⊰ ⊱ ⊲ ⊳ ⊴ ⊵ ⊶ ⊷ ⊸ ⊹ ⊺ ⊻ ⊼ ⊽ ⊾ ⊿ ⊿

A = 64 standard contacts L=13,3

Marking	Standard
Performance level	G2/0 = Contact area perform. level2 / Termination tin
Flux proof	no
Fixing clip	no
Dimensions	SDA-85013-0001 sht.1
Technical Data	PS-85013-0001

A	G2/0	a1-32	c1-32
Contact symbol	Perform. level	Contact position number	

first release see ECN No. 1868	REVISIONS		REVISIONS		REVISIONS		REVISIONS	REVISIONS	REVISIONS	REVISIONS	REVISIONS
	FOR PREVIOUS REVISIONS SEE MRI LIST		UNLESS OTHERWISE SPECIFIED TOLERANCES: ANGULAR ± 2°	DRWG BY	SIGN	CAD/CAM PROJECT NAME	THIS DRAWING CONTAINS INFORMATION THAT IS PROPRIETARY TO MOLEX INC. & SHOULD NOT BE USED WITHOUT WRITTEN PERMISSION		SH.	REV.	
LTR	3 PLACE ± .		INCH	DRWG BY	SIGN	TITLE	96 pos. Male connector acc. DIN 41612 style R contacts arrangement	SHEET NO.	DATE		
	2 PLACE ± .		METRIC	CHK'D BY	SIGN			1 OF 1	95/06/06		
▽	1 PLACE ± .			APP'D BY	SIGN	MOLEX EUROPE		DWG NO. SDA-85013-1677			
	DRAFT WHERE APPLICABLE MUST REMAIN WITHIN DIMENSIONS		DESIGN DIMENSION	SCALE	PART NO.		85013-1677		SIZE A		
			<input type="checkbox"/> MM <input type="checkbox"/> IN.								
			<input type="checkbox"/> MM <input type="checkbox"/> IN.								
			EQUIVALENT DIMENSION								
			IF TWO DIMENSIONS ARE SHOWN THE UPPER IS THE DESIGN DIMENSION, LOWER IS SECONDARY								