



SPECIFICATIONS

| Model | Stroke mm | Max Absorption Energy J(kgf·m) | Max Equiv. Mass kg (kgf) | Max Drag N (kgf) | Range of Impact Rate m/s |
|------------|-----------|--------------------------------|--------------------------|------------------|--------------------------|
| FW-2530M-S | 30 | 62.7(6.4) | 140(140) | 6370 (650) | 0.3~2 |

| Max. Cycle Rate cycle/min | Max. Absorption Energy per min. J/min(kgf·m/min) | Extension Force N(kgf) | Operating Temp. C° | Mass g |
|---------------------------|--|------------------------|--------------------|--------|
| 60 | 490(50) | 29.4(3.0) or lower | -5~70 | 460 |

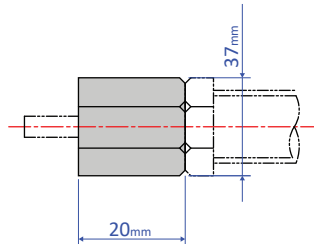
PRECAUTIONS FOR USE

- Do not use this product without carefully reading the attached owner's manual.
- Ensure that sufficient mounting strength is secured for this product. (As a guideline, it should be 2 to 3 times the maximum drag listed in the catalogue.)
- It cannot absorb impact from both directions at the same time.
- Do not use this product in a vacuum or a location where it may come in contact with oil.
- Ensure that an eccentric load is not applied to the soft absorber. (Allowable eccentric angle: $\pm 2.5^\circ$)
- Ensure that an external stopper is also used.

OPTIONAL PART

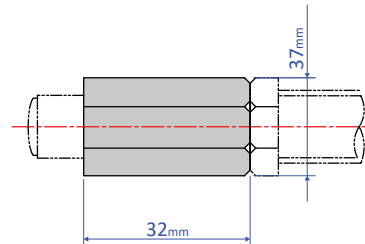
Stopper Nut OP-20GB

OP-020GB-S
(without cap)



Mass: 65

OP-020GB-C
(with cap)



Mass: 102

Standard nuts are sold separately as well – M25 nut