

Data sheet

SmartConnect Patchpanel 12 ports MC module

Page 1/6

P/N

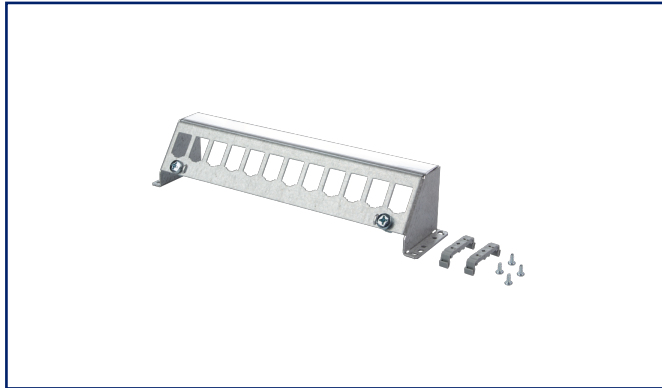
130927-1200-E

EAN 4251394635439

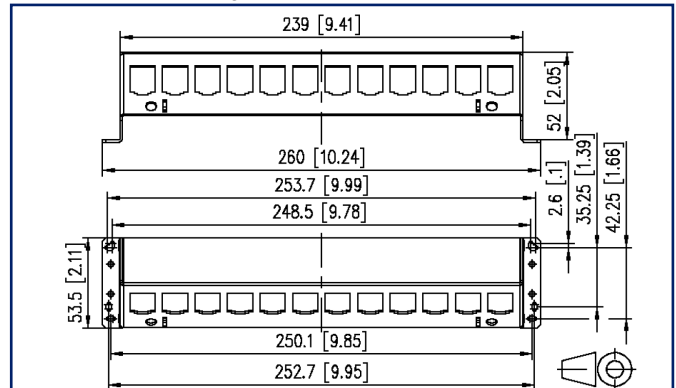
2022/07/14

Version: A

Illustrations



Dimensional drawing



See enlarged drawings at the end of document

Product specification

- empty module holder for receiving data, KOAX and fiber optic modules
- mounting type: module
- mounting on standard rail (TH35) or on support frame or mounting plate screwable
- consisting of 1 module holder made of bent sheet metal and 2 milled plastic brackets universally applicable for all variants
- mounting the plastic brackets on standard rail and perforated metal plate
- functional equipotential bonding acc. to DIN EN 50310 (VDE0800-2-310) with 2 screw fastenings via grounding screw M6x10 with nut and lock washer possible
- 1 labeling strip on module holder
- variants: 12, 16, 24 ports



SmartConnect Patchpanel 12 ports MC module

P/N

130927-1200-E

EAN 4251394635439

2022/07/14

Version: A

Technical Data

General Data

Fields of application	Distributed building services
Mechanical measurement according to MICE	M1
Ingress measurement according to MICE	I1
Climatic measurement according to MICE	C1
Electromagnetic measurement according to MICE	E3
Design	patch panel
Mounting style	standard rail TH35, perforated metal plate
Color	gray
Dimensions	
Dimension (L x W x H)	260 mm x 53.5 mm x 53.5 mm
Dimension (L x W x H)	10.236 in. x 2.106 in. x 2.106 in.
Weight	236 g
Weight	0.5203 lb
Modularity	yes
Labeling option	labeling strip on module holder

Connections/interfaces

Number of ports interface 1	12
Number of equipped ports interface 1	0
Cable access/outlet	45° upwards
Ground connection	grounding screw M6x10 with nut and lock washer

Mechanical data

Cut-out	module
---------	--------

Materials and material properties

Material - Housing	aluminium-zinc sheet
Material - Mounting	PVC
Halogen free	yes
Silicone free	no paint wetting interfering substances (LaBS) in the process chain
LaBS Note	subsequent contamination possible due to handling and possible storage in your company
RoHS	compliant

P | Cabling

Data sheet

Page 3/6

SmartConnect Patchpanel 12 ports MC module

P/N

130927-1200-E

EAN 4251394635439

2022/07/14

Version: A

Technical Data

Materials and material properties

REACH	compliant
-------	-----------

Classifications

ETIM 7.0	EC002006
----------	----------

ETIM 8.0	EC002006
----------	----------

Packing details

Type of packaging	1 pc(s) / plastic bag
-------------------	-----------------------

Packaging unit - Weight (gram)	246 g
--------------------------------	-------

Packaging unit - Weight (pound)	0.54 lb
---------------------------------	---------

Packaging dimension	54 mm x 260 mm x 65 mm
---------------------	------------------------

Packaging dimension	2.12 in. x 10.24 in. x 2.56 in.
---------------------	---------------------------------



SmartConnect Patchpanel 12 ports MC module

P/N

130927-1200-E

EAN 4251394635439

2022/07/14

Version: A

Accessories

P/N	Designation
1308450233-E	Patch cord Cat.6 _A AWG 26 0.2 m gray
1308450333-E	Patch cord Cat.6 _A AWG 26 0.3 m gray
1308450533-E	Patch cord Cat.6 _A AWG 26 0.5 m gray
1308451033-E	Patch cord Cat.6 _A AWG 26 1.0 m gray
13084V0300-E	Patch cord Cat.6 Ultraflex500 VoIP AWG 26 0.3 m black
13084V0333-E	Patch cord Cat.6 Ultraflex500 VoIP AWG 26 0.3 m gray
13084V0388-E	Patch cord Cat.6 Ultraflex500 VoIP AWG 26 0.3 m white
13084V0500-E	Patch cord Cat.6 Ultraflex500 VoIP AWG 26 0.5 m black
13084V0533-E	Patch cord Cat.6 Ultraflex500 VoIP AWG 26 0.5 m gray
13084V0588-E	Patch cord Cat.6 Ultraflex500 VoIP AWG 26 0.5 m white
13084V1000-E	Patch cord Cat.6 Ultraflex500 VoIP AWG 26 1.0 m black
13084V1033-E	Patch cord Cat.6 Ultraflex500 VoIP AWG 26 1.0 m gray
13084V1088-E	Patch cord Cat.6 Ultraflex500 VoIP AWG 26 1.0 m white
130898-00-I	BLIND module light gray
130898-00-RW-I	BLIND module pure white
130898-01-I	COAX modul F jack / F jack
130898-02-I	COAX modul IEC jack / F jack
130898-03-I	COAX modul IEC plug / F jack
130908-I-B1	UAE modul Cat.5e white
130909-I	UAE modul Cat.6 jack T568A white
130910-I	E-DAT modul Cat.6 _A 8(8) jack, T568A
130910-I-B1	E-DAT modul Cat.6 _A 8(8) jack, T568B
130910-Z	E-DAT modul Cat.6 _A 8(8) jack, T568A (12 pcs)
1309A0-I	E-DAT modul coupler 8(8) 180° class E _A
130A11-29-I	UAE modul 8(8) Cat.6 _A black
130A11-I	UAE modul 8(8) Cat.6 _A white
130B11-25-E	25Gmodul

SmartConnect Patchpanel 12 ports MC module

P/N

130927-1200-E**EAN 4251394635439**

2022/07/14

Version: A

Accessories

130B11-25-Z	25Gmodul (12 pcs)
130B11-E	C6 _A modul 180° jack
130B11-Z	C6 _A modul 180° jack (12 pcs)
15091001-I	OpDAT modul ST (ceramic, light gray) SM
15091071-I	OpDAT modul LC-D (ceramic, blue) SM
15091072-I	OpDAT modul LC-D (ceramic, aqua) MM
15091075-I	OpDAT modul LC-D (ceramic, violet) MM
15091076-I	OpDAT modul LC-D APC (ceramic, green) SM
1509107B-I	OpDAT modul LC-D (ceramic, beige) MM
1509107M-I	OpDAT modul LC-D (ceramic, lime green) OM5

P | Cabling

Data sheet

Page 6/6

SmartConnect Patchpanel 12 ports MC module

P/N

130927-1200-E

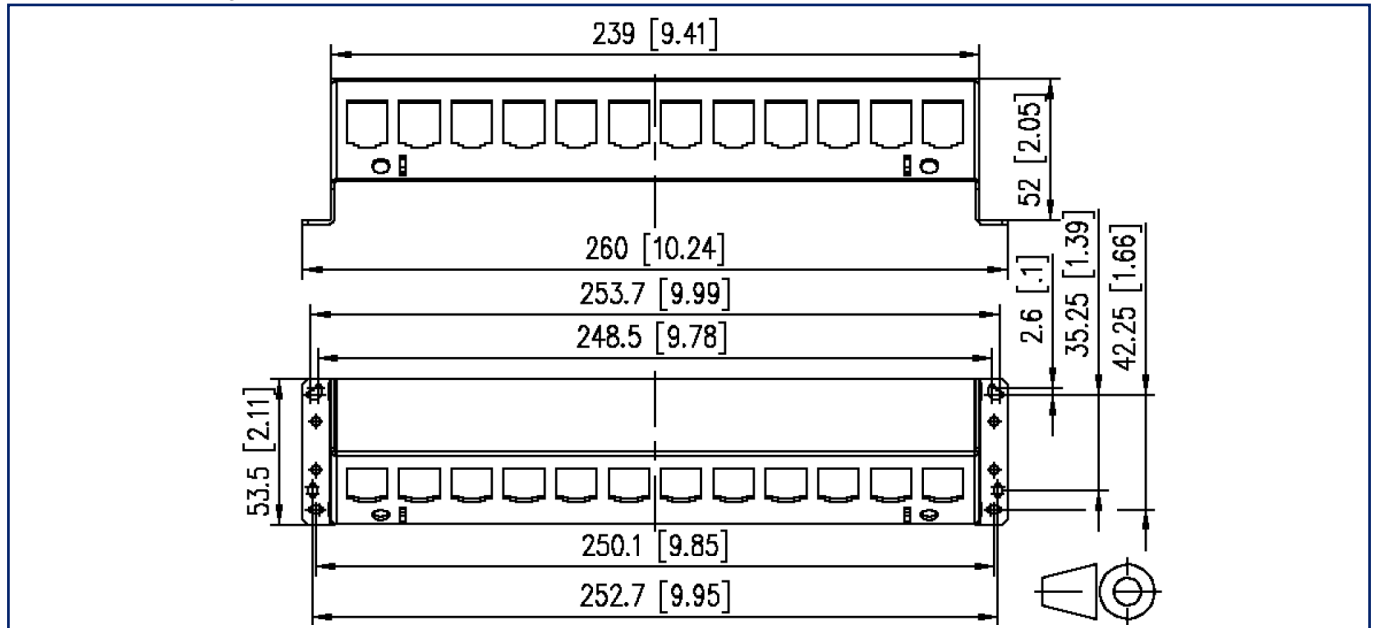
EAN 4251394635439

2022/07/14

Version: A

Illustrations

Dimensional drawing



© 2022 METZ CONNECT - Technische Änderungen vorbehalten! Subject to modifications! Sous réserve de modifications techniques!

