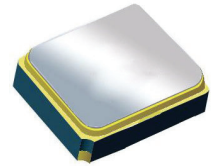


# Surface Mount 2017.50MHz SAW Filter



1.4 x 1.1 x 0.7 mm

**AFS14A15-2017.50-T3**

Moisture Sensitivity Level (MSL) – This product is Hermetically Sealed and not Moisture Sensitive - MSL = N/A: Not Applicable



**RoHS  
Compliant**

## FEATURES:

- 1.4 x 1.1 x 0.7 mm low profile SMT package
- Low Insertion loss
- Excellent selectivity with high out-of-band rejection

## APPLICATIONS:

- Wireless Communication
- Remote Control
- Cellular Phones

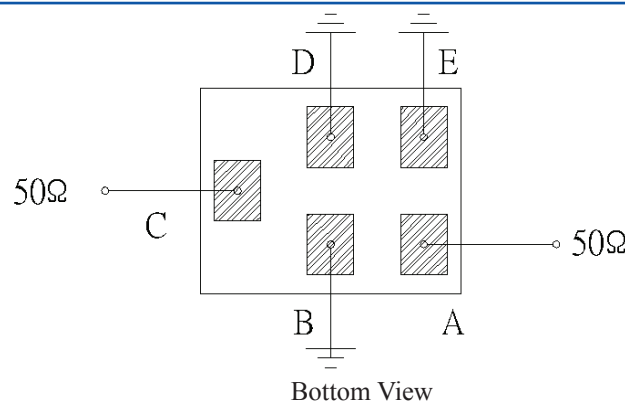
## ELECTRICAL SPECIFICATIONS:

### Maximum Ratings

Item	Value
Input Power Level	+13 dBm max.
DC Permissive Voltage	3.0V DC max.
Operating Temperature Range	-30°C to + 85°C
Storage Temperature Range	-40°C to + 85°C

Parameters	Minimum	Typical	Maximum	Units	Notes
Center Frequency ( $f_c$ )		2017.50		MHz	
Insertion Loss (IL)		2.0	2.8	dB	(2010.00~2025.00MHz)
Effective Bandwidth		15		MHz	
Amplitude Ripple		0.25	1.00	dB	(2010.00~2025.00MHz)
Worst-Case Input / Output Return Loss		20.8	10.88	dB	(2010.00~2025.00MHz)
Stop-band Attenuation (Referenced to 0.0 dB)	41	45		dB	DC~1850 MHz
	34	36			1850~1950 MHz
	15	19			1950~1980 MHz
	6	13			2050~2075 MHz
	23	37			2075~2110 MHz
	37	40			2110~3500 MHz
	34	40			3500~4060 MHz
	29	37			4060~5000 MHz
	25	35			5000~5500 MHz
	23	33			5500~6000 MHz
Terminating Source Impedance ( $Z_S$ )		50		$\Omega$	
Temperature Coefficient of Frequency		-36		ppm/°C	

## TEST CIRCUIT:

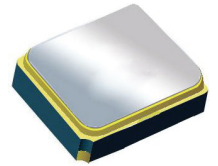


# Surface Mount 2017.50MHz SAW Filter

AFS14A15-2017.50-T3

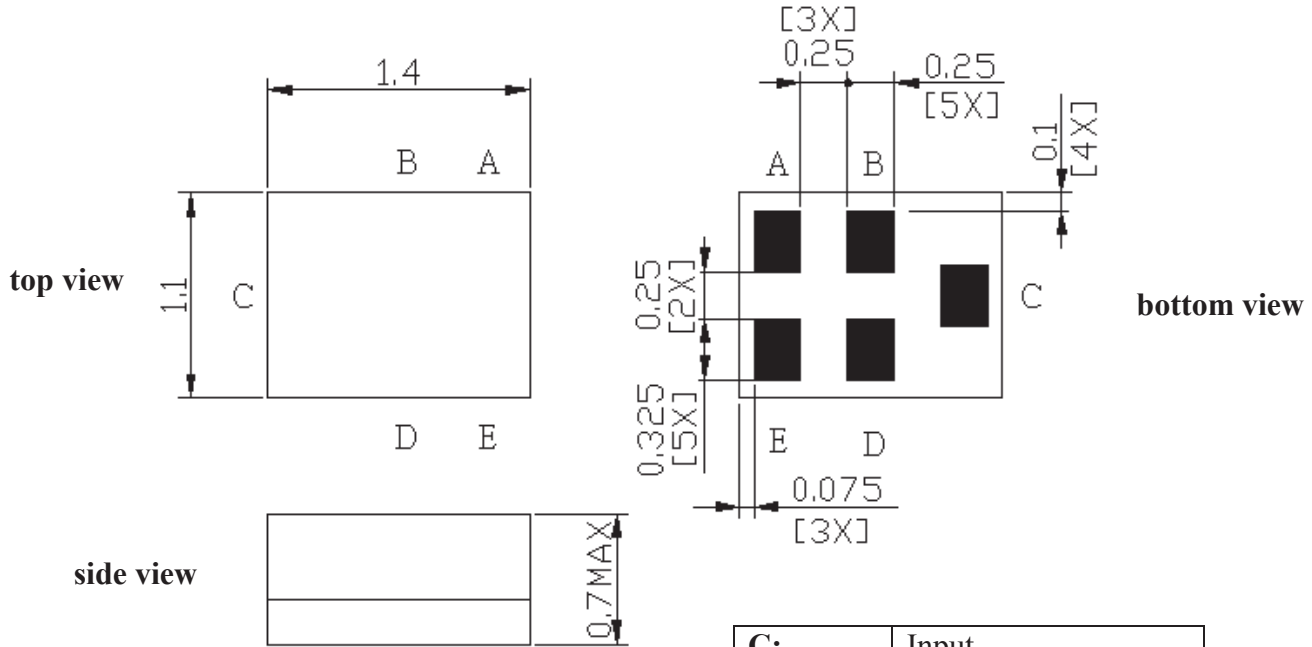


RoHS  
Compliant



1.4 x 1.1 x 0.7 mm

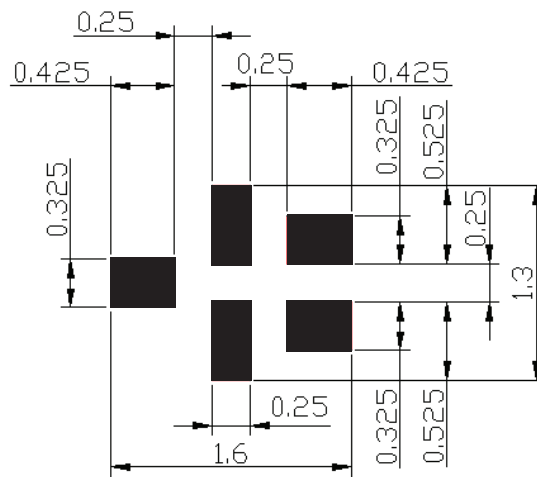
## OUTLINE DIMENSIONS:



<b>C:</b>	Input
<b>A:</b>	Output
<b>B, D, E:</b>	Ground

\*All Dimensions are in mm

### Recommended Land Pattern:



■ : Land Pattern  
Unit : mm

# Surface Mount 2017.50MHz SAW Filter

AFS14A15-2017.50-T3



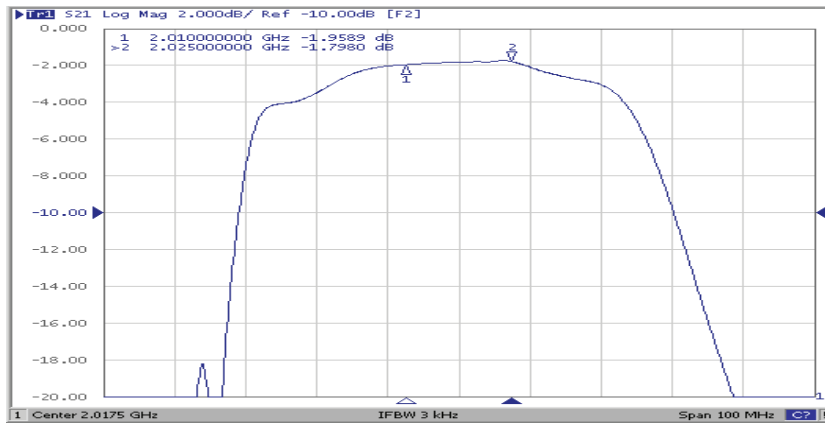
RoHS  
Compliant



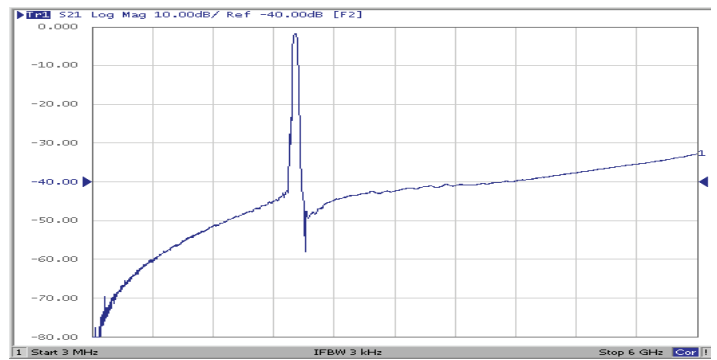
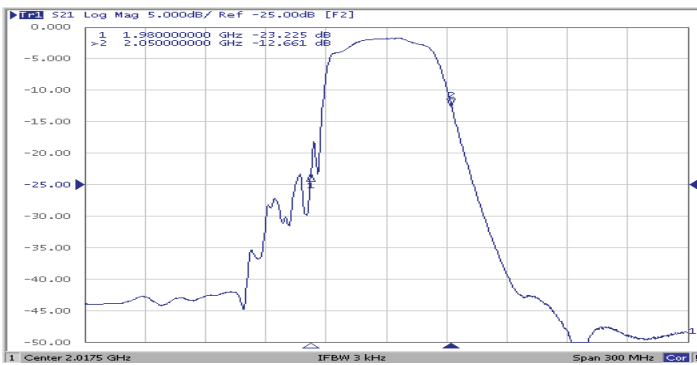
1.4 x 1.1 x 0.7 mm

## FREQUENCY CHARACTERISTICS:

### Filter Frequency Response (Narrowband)

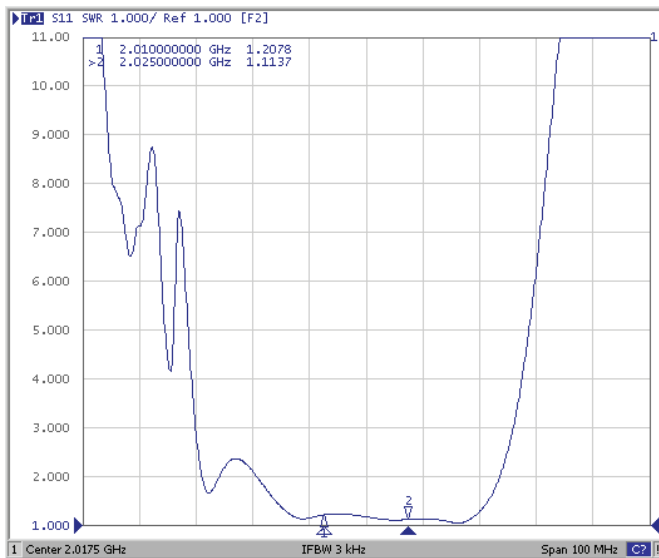


### Filter Frequency Response (Wideband)

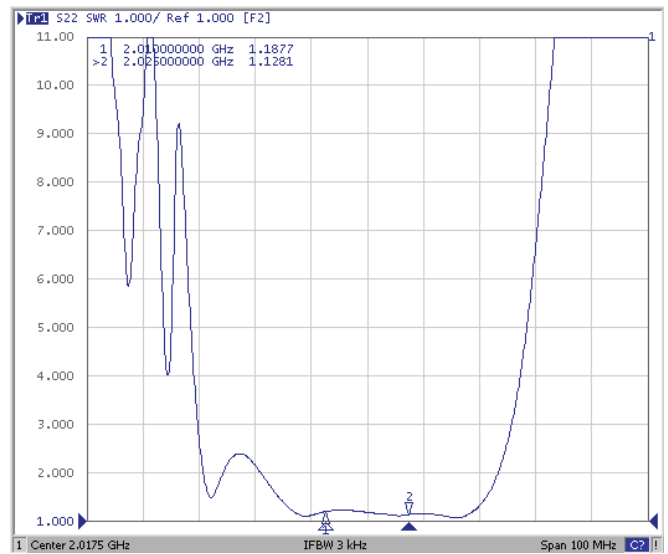


## REFLECTION FUNCTIONS:

### S11



### S22



ABRACON IS  
ISO 9001:2008  
CERTIFIED



**ABRACON**  
CORPORATION

Visit [www.abracon.com](http://www.abracon.com) for Terms & Conditions of Sale  
30332 Esperanza, Rancho Santa Margarita, California 92688  
tel 949-546-8000 | fax 949-546-8001 | [www.abracon.com](http://www.abracon.com)

Revised: 04.16.13

# Surface Mount 2017.50MHz SAW Filter

AFS14A15-2017.50-T3

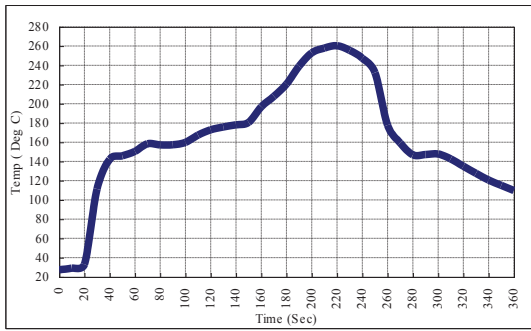


RoHS  
Compliant



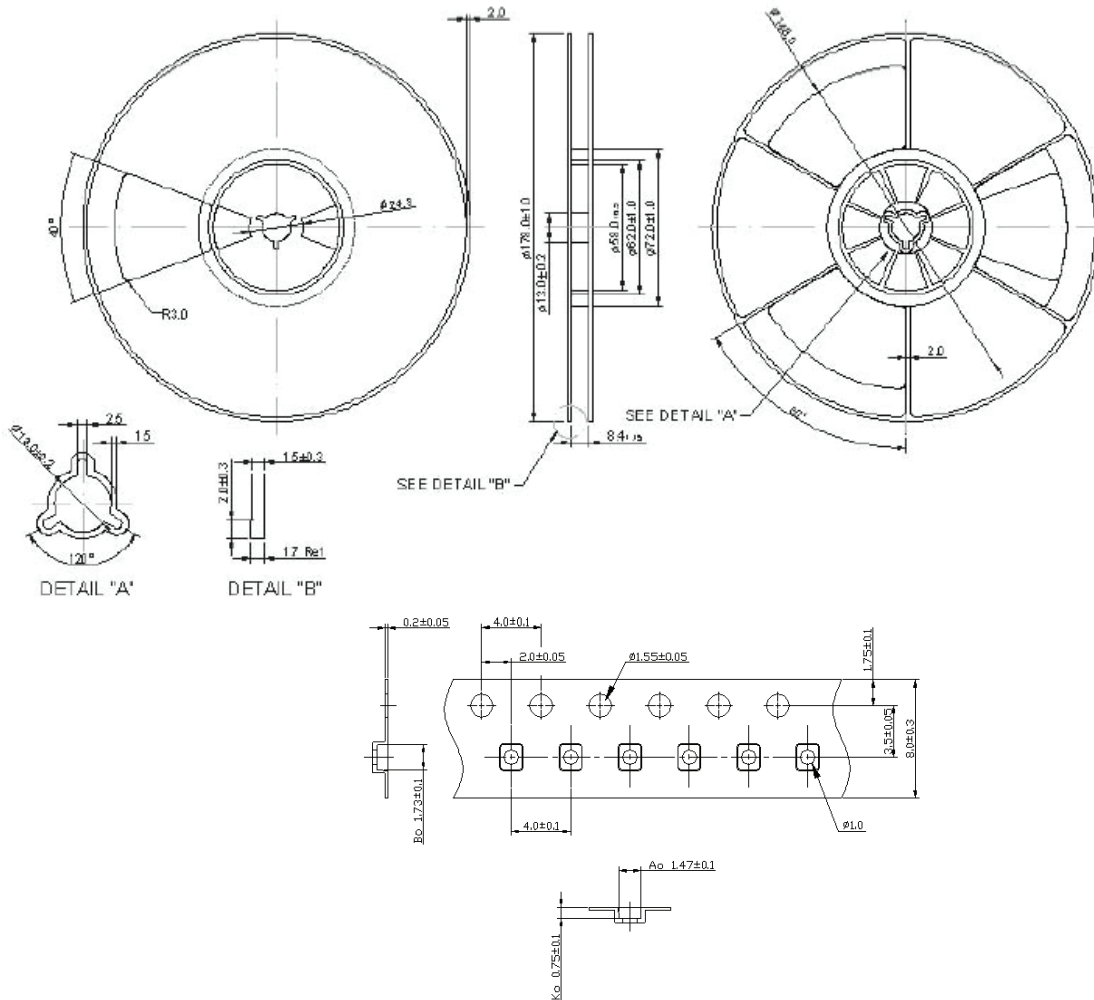
1.4 x 1.1 x 0.7 mm

## REFLOW PROFILE:



## PACKAGING: 3000 Units/Reel “-T2” parts (2k/reel) are no longer available effective 01/01/2013

Reel Count : 7" = 3k units



**ATTENTION:** Abracon Corporation's products are COTS – Commercial-Off-The-Shelf products; suitable for Commercial, Industrial and, where designated, Automotive Applications. Abracon's products are not specifically designed for MILITARY, Aviation, Aerospace, Life-dependant Medical applications or any application requiring high reliability where component failure could result in loss of life and/or property. For applications requiring high reliability and/or presenting an extreme operating environment, written consent and authorization from Abracon Corporation is required. Please contact Abracon Corporation for more information.

ABRACON IS  
ISO 9001:2008  
CERTIFIED



Visit [www.abracon.com](http://www.abracon.com) for Terms & Conditions of Sale  
30332 Esperanza, Rancho Santa Margarita, California 92688  
tel 949-546-8000 | fax 949-546-8001 | [www.abracon.com](http://www.abracon.com)

Revised: 04.16.13