

# LED EPL-2140Hv

Class: LED Vertical PL / Hybrid (A+B)



## Product Description

The Euri Lighting LED vertical EPL-2140Hv features hybrid (Type A+B) technology giving it the benefit of working with a (compatible) ballast or AC 120-277 line voltage. This 12-Watt PL lamp replaces a 26-Watt compact fluorescent lamp (CFL). It's bright white light (4000K), 1100 Lumens making it ideal where bright lighting is needed such as in hospitality, retail, and office applications due to its uniform light. Enjoy 50,000 hours of continuous light distribution, and other features such as: damp rated, reduced maintenance expenses, and energy efficiency.



**Estimated Energy Cost:** \$1.44 per year

\*Note: Design, features and specifications subject to change without notice. Some features may not be available on all models. For more information please visit: [www.eurilighting.com](http://www.eurilighting.com) or call 1-310-787-1100

## LED Hybrid PL

Hybrid technology reduces maintenance expenses and allows adaptable installation methods whether a ballast is present or not

## Specifications

Input Power	Input Voltage	Lumen Output	Beam Angle	Center Beam	CCT
12 W	AC120-277V	1100 lm	140°	N/A	4000 K
CRI	Luminous Efficacy	Power Factor	Input Current	Base/Cap	Lamp Lifespan
80	90 lm/W	0.9	0.4 A	G24Q	50,000 Hrs.

### Product Features



Energy Efficient

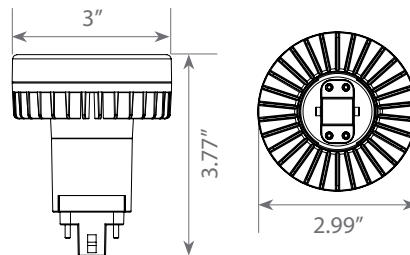


Damp Rated

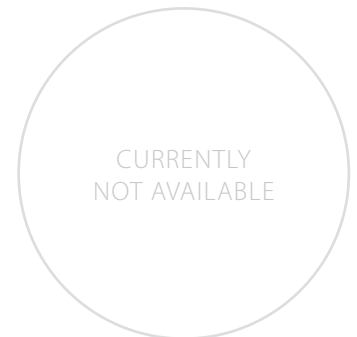


AC120 - 277 V

### Product Dimensions



### Product Photometric Data



Euri Lighting | A Division of IRTRONIX Inc.