



Connecting sleeve, Colour: Orange

### Business data

|  |                   |
|--|-------------------|
| Article number                             | <u>2873.3</u>     |
| Article name                               | VBS 2/10 OG       |
| GTIN (EAN)                                 | 4044211055981     |
| Packaging unit                             | 20                |
| Quantity unit                              | PC                |
| Weight per piece (not including packaging) | 0.4 g             |
| Weight per piece (including packaging)     | 0.42 g            |
| Unit of weight                             | G                 |
| Customs number                             | 85389099          |
| Country of origin                          | DE                |
| Product description                        | Connecting sleeve |
| Colour                                     | Orange            |

---

### Technical data

---

#### Dimensions

|       |       |
|-------|-------|
| Width | 16 mm |
|-------|-------|

---

#### Materials

|                    |               |
|--------------------|---------------|
| Insulation housing | Polyamide 6.6 |
|--------------------|---------------|

---

|                          |     |
|--------------------------|-----|
| Flammability class UL 94 | V-2 |
|--------------------------|-----|

---

|                           |        |
|---------------------------|--------|
| Working temperature, min. | -40 °C |
|---------------------------|--------|

---

|                           |        |
|---------------------------|--------|
| Working temperature, max. | 105 °C |
|---------------------------|--------|

---

#### Environmental Product Compliance

|               |     |
|---------------|-----|
| REACH Conform | yes |
|---------------|-----|

---

|                      |            |
|----------------------|------------|
| REACH Reference date | 2022-06-10 |
|----------------------|------------|

---

|                                |    |
|--------------------------------|----|
| REACH Candidate Substance Note | No |
|--------------------------------|----|

---

|              |     |
|--------------|-----|
| RoHS Conform | yes |
|--------------|-----|

---

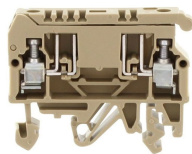
---

### Media

---

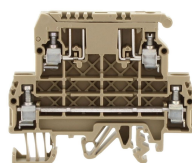
### Accessories

#### Terminal blocks



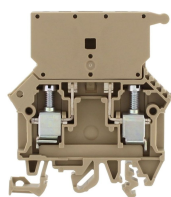
Fuse-disconnect terminal, Screw connection, Mounting type: Mounting rail TS 35/7.5 and TS 32, Rated cross-section: 4 mm<sup>2</sup>, Width: 8 mm, Colour: Beige

| Article number | Article name | GTIN (EAN)    | Packaging unit |
|----------------|--------------|---------------|----------------|
| <u>1078.2</u>  | STK 2 BG     | 4044211013745 | 100            |



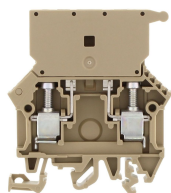
Fuse-disconnect terminal, Screw connection, Mounting type: Mounting rail TS 35/7.5 and TS 32, Rated cross-section: 4 mm<sup>2</sup>, Width: 8 mm, Colour: Beige

| Article number | Article name | GTIN (EAN)    | Packaging unit |
|----------------|--------------|---------------|----------------|
| <u>1079.2</u>  | STKD 1 BG    | 4044211013905 | 50             |



Fused terminal with disconnect plug, Screw connection, Mounting type: Mounting rail TS 35/7.5 and TS 32, Rated cross-section: 10 mm<sup>2</sup>, Width: 8 mm, Colour: Beige

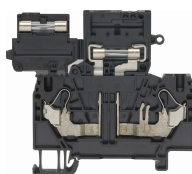
| Article number | Article name | GTIN (EAN)    | Packaging unit |
|----------------|--------------|---------------|----------------|
| <u>17042.2</u> | SIK 10/ST BG | 4044211155797 | 25             |



Fuse-disconnect terminal, Screw connection, Mounting type: Mounting rail TS 35/7.5 and TS 32, Rated cross-section: 10 mm<sup>2</sup>, Width: 8 mm, Colour: Beige

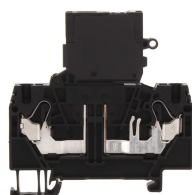
| Article number | Article name | GTIN (EAN)    | Packaging unit |
|----------------|--------------|---------------|----------------|
| <u>1101.2</u>  | SIK 10 BG    | 4044211016388 | 50             |

#### ##INVERSE##CONTA-CONNECT



Fuse-disconnect terminal, Push-in connection, Mounting type: Mounting rail TS 35/7.5, Rated cross-section: 4 mm<sup>2</sup>, Width: 6 mm, Colour: Black

| Article number | Article name | GTIN (EAN)    | Packaging unit |
|----------------|--------------|---------------|----------------|
| <u>3290.4</u>  | FSIK 4/2A BK | 4044211180287 | 25 ST          |



Fuse-disconnect terminal, Push-in connection, Mounting type: Mounting rail TS 35/7.5, Rated cross-section: 4 mm<sup>2</sup>, Width: 6 mm, Colour: Black

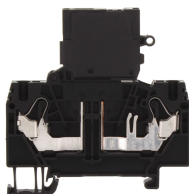
| Article number | Article name                  | GTIN (EAN)    | Packaging unit |
|----------------|-------------------------------|---------------|----------------|
| <u>3291.4</u>  | FSIK 4/2A/LED 12-30V AC/DC BK | 4044211188962 | 25 ST          |

### ##INVERSE##CONTA-CONNECT



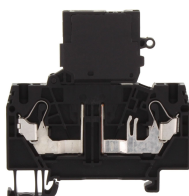
Disconnect-blade terminal, Push-in connection, Mounting type: Mounting rail TS 35/7.5, Rated cross-section: 4 mm<sup>2</sup>, Width: 6.1 mm, Colour: Black

| Article number | Article name    | GTIN (EAN)    | Packaging unit |
|----------------|-----------------|---------------|----------------|
| <u>3239.4</u>  | FSIK 4/2A/MT BK | 4044211209933 | 50 ST          |



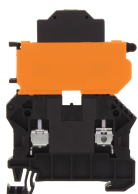
Fuse-disconnect terminal, Push-in connection, Mounting type: Mounting rail TS 35/7.5, Rated cross-section: 4 mm<sup>2</sup>, Width: 6 mm, Colour: Black

| Article number | Article name                  | GTIN (EAN)    | Packaging unit |
|----------------|-------------------------------|---------------|----------------|
| <u>3292.4</u>  | FSIK 4/2A/LED 30-60V AC/DC BK | 4044211188979 | 25 ST          |



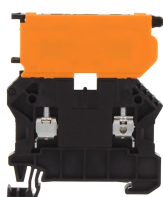
Fuse-disconnect terminal, Push-in connection, Mounting type: Mounting rail TS 35/7.5, Rated cross-section: 4 mm<sup>2</sup>, Width: 6 mm, Colour: Black

| Article number | Article name                    | GTIN (EAN)    | Packaging unit |
|----------------|---------------------------------|---------------|----------------|
| <u>3293.4</u>  | FSIK 4/2A/LED/110-250V AC/DC BK | 4044211188986 | 25 ST          |



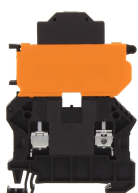
Fuse-disconnect terminal, Screw connection, Mounting type: Mounting rail TS 35/7.5, Rated cross-section: 4 mm<sup>2</sup>, Width: 6.1 mm, Colour: Black

| Article number | Article name                  | GTIN (EAN)    | Packaging unit |
|----------------|-------------------------------|---------------|----------------|
| <u>17172.4</u> | SSIK 4/2A/LED 30-60V AC/DC BK | 4044211180447 | 25 ST          |



Fuse-disconnect terminal, Screw connection, Mounting type: Mounting rail TS 35/7.5, Rated cross-section: 4 mm<sup>2</sup>, Width: 6.1 mm, Colour: Black

| Article number | Article name | GTIN (EAN)    | Packaging unit |
|----------------|--------------|---------------|----------------|
| <u>17150.4</u> | SSIK 4/2A BK | 4044211179816 | 50 ST          |



Fuse-disconnect terminal, Screw connection, Mounting type: Mounting rail TS 35/7.5, Rated cross-section: 4 mm<sup>2</sup>, Width: 6.1 mm, Colour: Black

| Article number | Article name                  | GTIN (EAN)    | Packaging unit |
|----------------|-------------------------------|---------------|----------------|
| <u>17171.4</u> | SSIK 4/2A/LED 12-30V AC/DC BK | 4044211180430 | 25 ST          |



Fuse-disconnect terminal, Screw connection, Mounting type: Mounting rail TS 35/7.5, Rated cross-section: 4 mm<sup>2</sup>, Width: 6.1 mm, Colour: Black

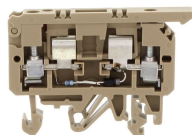
| Article number | Article name                    | GTIN (EAN)    | Packaging unit |
|----------------|---------------------------------|---------------|----------------|
| <u>17173.4</u> | SSIK 4/2A/LED 110-250V AC/DC BK | 4044211180454 | 25 ST          |

### ##INVERSE##CONTA-CONNECT



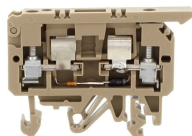
Fuse-disconnect terminal, Screw connection, Mounting type: Mounting rail TS 35/7.5, Rated cross-section: 4 mm<sup>2</sup>, Width: 6.1 mm, Colour: Black

| Article number          | Article name                | GTIN (EAN)    | Packaging unit |
|-------------------------|-----------------------------|---------------|----------------|
| <a href="#">17174.4</a> | SSIK 4/2A/LED 500V AC/DC BK | 4044211180461 | 25 ST          |



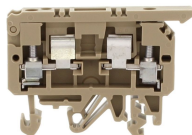
Fuse-disconnect terminal, Screw connection, Mounting type: Mounting rail TS 35/7.5 and TS 32, Rated cross-section: 4 mm<sup>2</sup>, Width: 8 mm, Colour: Beige

| Article number         | Article name            | GTIN (EAN)    | Packaging unit |
|------------------------|-------------------------|---------------|----------------|
| <a href="#">2451.2</a> | STK 1/LED(RD)/60V DC BG | 4044211052416 | 100 ST         |



Fuse-disconnect terminal, Screw connection, Mounting type: Mounting rail TS 35/7.5 and TS 32, Rated cross-section: 4 mm<sup>2</sup>, Width: 8 mm, Colour: Beige

| Article number         | Article name             | GTIN (EAN)    | Packaging unit |
|------------------------|--------------------------|---------------|----------------|
| <a href="#">2457.2</a> | STK 1/LED(RD)/115V AC BG | 4044211052478 | 100 ST         |



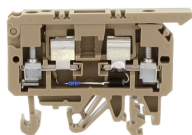
Fuse-disconnect terminal, Screw connection, Mounting type: Mounting rail TS 35/7.5 and TS 32, Rated cross-section: 4 mm<sup>2</sup>, Width: 8 mm, Colour: Beige

| Article number         | Article name | GTIN (EAN)    | Packaging unit |
|------------------------|--------------|---------------|----------------|
| <a href="#">2190.2</a> | STK 1 BG     | 4044211050115 | 100            |



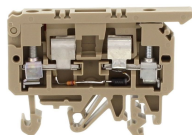
Fuse-disconnect terminal, Screw connection, Mounting type: Mounting rail TS 35/7.5 and TS 32, Rated cross-section: 4 mm<sup>2</sup>, Width: 8 mm, Colour: Beige

| Article number         | Article name             | GTIN (EAN)    | Packaging unit |
|------------------------|--------------------------|---------------|----------------|
| <a href="#">2452.2</a> | STK 1/LED(RD)/115V DC BG | 4044211052423 | 100 ST         |



Fuse-disconnect terminal, Screw connection, Mounting type: Mounting rail TS 35/7.5 and TS 32, Rated cross-section: 4 mm<sup>2</sup>, Width: 8 mm, Colour: Beige

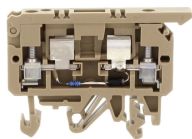
| Article number         | Article name            | GTIN (EAN)    | Packaging unit |
|------------------------|-------------------------|---------------|----------------|
| <a href="#">2454.2</a> | STK 1/LED(RD)/24V AC BG | 4044211052447 | 100 ST         |



Fuse-disconnect terminal, Screw connection, Mounting type: Mounting rail TS 35/7.5 and TS 32, Rated cross-section: 4 mm<sup>2</sup>, Width: 8 mm, Colour: Beige

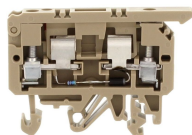
| Article number         | Article name            | GTIN (EAN)    | Packaging unit |
|------------------------|-------------------------|---------------|----------------|
| <a href="#">2455.2</a> | STK 1/LED(RD)/48V AC BG | 4044211052454 | 100 ST         |

### ##INVERSE##CONTA-CONNECT



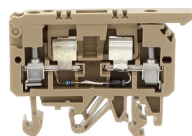
Fuse-disconnect terminal, Screw connection, Mounting type:Mounting rail TS 35/7.5 and TS 32, Rated cross-section: 4 mm<sup>2</sup>, Width: 8 mm, Colour: Beige

| Article number | Article name            | GTIN (EAN)    | Packaging unit |
|----------------|-------------------------|---------------|----------------|
| <u>2449.2</u>  | STK 1/LED(RD)/24V DC BG | 4044211052393 | 100 ST         |



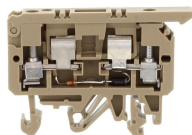
Fuse-disconnect terminal, Screw connection, Mounting type:Mounting rail TS 35/7.5 and TS 32, Rated cross-section: 4 mm<sup>2</sup>, Width: 8 mm, Colour: Beige

| Article number | Article name             | GTIN (EAN)    | Packaging unit |
|----------------|--------------------------|---------------|----------------|
| <u>2453.2</u>  | STK 1/LED(RD)/230V DC BG | 4044211052430 | 100 ST         |



Fuse-disconnect terminal, Screw connection, Mounting type:Mounting rail TS 35/7.5 and TS 32, Rated cross-section: 4 mm<sup>2</sup>, Width: 8 mm, Colour: Beige

| Article number | Article name             | GTIN (EAN)    | Packaging unit |
|----------------|--------------------------|---------------|----------------|
| <u>2458.2</u>  | STK 1/LED(RD)/230V AC BG | 4044211052485 | 100 ST         |



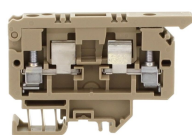
Fuse-disconnect terminal, Screw connection, Mounting type:Mounting rail TS 35/7.5 and TS 32, Rated cross-section: 4 mm<sup>2</sup>, Width: 8 mm, Colour: Beige

| Article number | Article name            | GTIN (EAN)    | Packaging unit |
|----------------|-------------------------|---------------|----------------|
| <u>2456.2</u>  | STK 1/LED(RD)/60V AC BG | 4044211052461 | 100 ST         |



Fused terminal, Screw connection, Mounting type:Mounting rail TS 35/7.5 and TS 32, Rated cross-section: 10 mm<sup>2</sup>, Width: 8 mm, Colour: Black

| Article number | Article name   | GTIN (EAN)    | Packaging unit |
|----------------|----------------|---------------|----------------|
| <u>17364.4</u> | SIK 10 PA-G BK | 4044211178406 | 50 ST          |



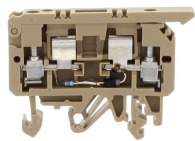
Fuse-disconnect terminal, Screw connection, Mounting type: Mounting rail TS 15/5.5, Rated cross-section: 4 mm<sup>2</sup>, Width: 8 mm, Colour: Beige

| Article number | Article name | GTIN (EAN)    | Packaging unit |
|----------------|--------------|---------------|----------------|
| <u>2191.2</u>  | STK 1/15 BG  | 4044211050160 | 100            |

---

### ##INVERSE##CONTA-CONNECT

---



Fuse-disconnect terminal, Screw connection, Mounting type:Mounting rail TS 35/7.5 and TS 32, Rated cross-section: 4 mm<sup>2</sup>, Width: 8 mm, Colour: Beige

| Article number | Article name            | GTIN (EAN)    | Packaging unit |
|----------------|-------------------------|---------------|----------------|
| <u>2450.2</u>  | STK 1/LED(RD)/48V DC BG | 4044211052409 | 100 ST         |

---