



### SPECIFICATIONS

Model	Stroke mm	Max Energy Absorption J(kgf·m)	Max Equiv. Mass kg(kgf)	Range of Impact Rate m/s	Max Drag N(kgf)
FL-1620H-S	20	17.6(1.8)	60(60)	0.3~3	2,646(270)

### COMMON SPECIFICATIONS

Max Cycle Rate cycle/min	Max Energy Absorption per min. J/min(kgf·m/min)	Extension Force N(kgf)	Operating Temp. C°	Mass g
60	235(24)	19.6(2.0) or lower	-5~70	124

### PRECAUTIONS FOR USE

- Do not use this product without carefully reading the attached owner's manual.
- We recommend that you use it with an external stopper (Stopper nut OP-020RB).
- Ensure that sufficient mounting strength is secured for this product. (As a guideline, it should be 2 to 3 times the maximum drag listed in the catalogue.)
- Do not use this product in a vacuum or a location where it may come in contact with oil.
- Ensure that an eccentric load is not applied to the soft absorber. (Allowable eccentric angle:  $\pm 2.5^\circ$ )

### ADJUSTMENT METHOD

- To adjust, turn the adjustment knob located at the bottom of the main unit.
- Because the adjustment can be done in an analog manner, a value between two integers on the indicator can be set.
- Once the adjustment is complete, secure with a lock screw using a hex wrench.

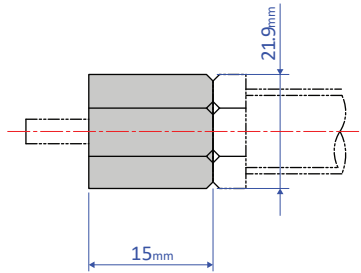
### CHARACTERISTICS

- With an adjustable multiple-orifice structure, an optimal impact absorption can be achieved by making adjustments, even under variable operating conditions.
- This product is a long-stroke type that is suitable for high-speed (3m/s) collisions.

## OPTIONAL PARTS

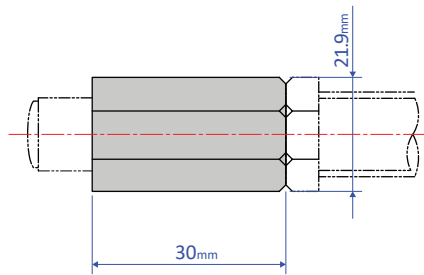
### Stopper nut OP-020HB

OP-020HB-S  
(without cap)



Mass 15

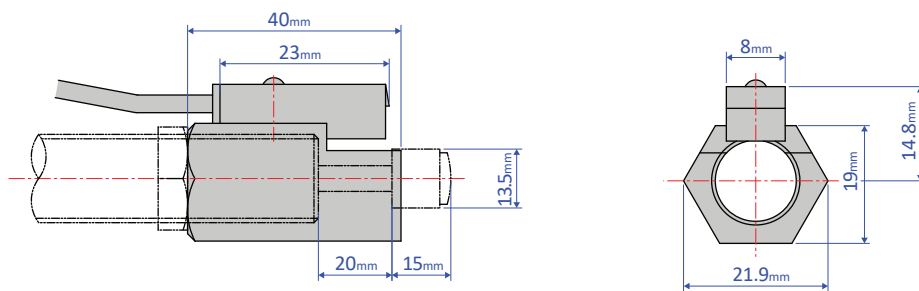
OP-020HB-C  
(with cap)



Mass 28

Standard nuts are sold separately as well - M14 nut

### Holder with a switch OP-030HB



Mass 46