

# AHV SERIES

## THREE PHASE HIGH PERFORMANCE EMI FILTER

### Single stage delta configuration

#### INTRODUCTION

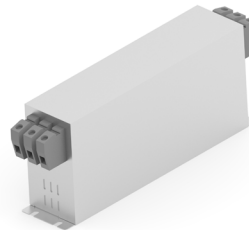
Bookshelf design for motor drive applications requiring minimum space and convenient installation with superior performance at significant interference levels

#### APPLICATION

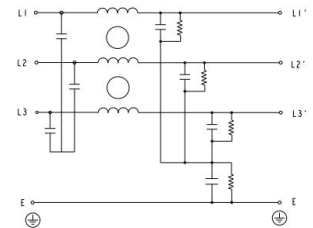
- IT power distribution network
- Three phase drives
- Renewable energy systems
- Process automation equipments
- Energy conversion devices

#### FEATURES

- Superior performance
- Compact
- Low leakage current
- Book shelf mounting



STANDARD



TYPICAL CIRCUIT DIAGRAM

#### APPROVALS AND COMPLIANCE

- UL recognized as per UL 60939-3 and CSA22.2 No 8



## Specifications

Electrical Characteristics	
Agency Rated Voltage	Line to Line: 760/750VAC
Current Ratings	7A to 180A @ 40°C
Operating Frequency	50/60Hz
High Potential Test Voltage	Line to Ground: 3535VDC for 1 minute
	Line to Line: 3268VDC for 1 minute
Overload Capability	135% Rated current for 15 minutes

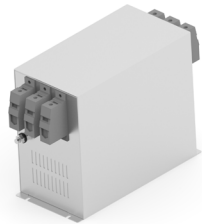
## AHV Series

### Single Stage Delta Configuration

Functional Characteristics	
Operating Temperature Range	-25°C to +85°C
Climatic Category	25/85/21
Termination (Depends on Current Rating)	Quick Connect 7A to 180A
Flammability Corresponding to	UL 94 V-0

Reference Standards	
Design Corresponding to	UL 60939-3 and CSA 22.2 No 8

### Selection Table - Standard Version



TE Ordering Number	Catalog Number	Rated Current @40°C	Rated Voltage @40°C	Leakage Current (mA)	Weight (Kgs)	Termination Type
2405077-1	7 AHV S BS	7A	760	2.5mA	2	1
2405077-2	10 AHV S BS	10A	760	2.5mA	2	1
2405077-3	16 AHV S BS	16A	760	2.5mA	3	1
2405077-4	20 AHV S BS	20A	760	2.5mA	3	1
2405077-5	25 AHV S BS	25A	760	2.5mA	3	1
2405077-6	30 AHV S BS	30A	760	2.5mA	4	1
2405077-7	40 AHV S BS	40A	760	2.5mA	4	1
2405077-8	50 AHV S BS	50A	760	2.5mA	4	1
2405077-9	63 AHV S BS	63A	760	3mA	5	1
1-2405077-0	75 AHV S BS	75A	760	3mA	5	1
1-2405077-1	80 AHV S BS	80A	760	3mA	5	1
1-2405077-2	90 AHV S BS	90A	760	3mA	6	2
1-2405077-3	100 AHV S BS	100A	760	3mA	6	2
1-2405077-4	125 AHV S BS	125A	760	3mA	7	3
1-2405077-5	150 AHV S BS	150A	760	3mA	8	3
1-2405077-6	180 AHV S BS	180A	760	3mA	12	4

# AHV Series

Single Stage Delta Configuration

## Termination Type: Connectors Cross Section

	1	2	3	4
Range; Flexible (mm <sup>2</sup> )	0.5 - 16	10 - 25	16 - 50	35 - 95

## Insertion Loss (Typical) - Measured in Closed 50Ω System

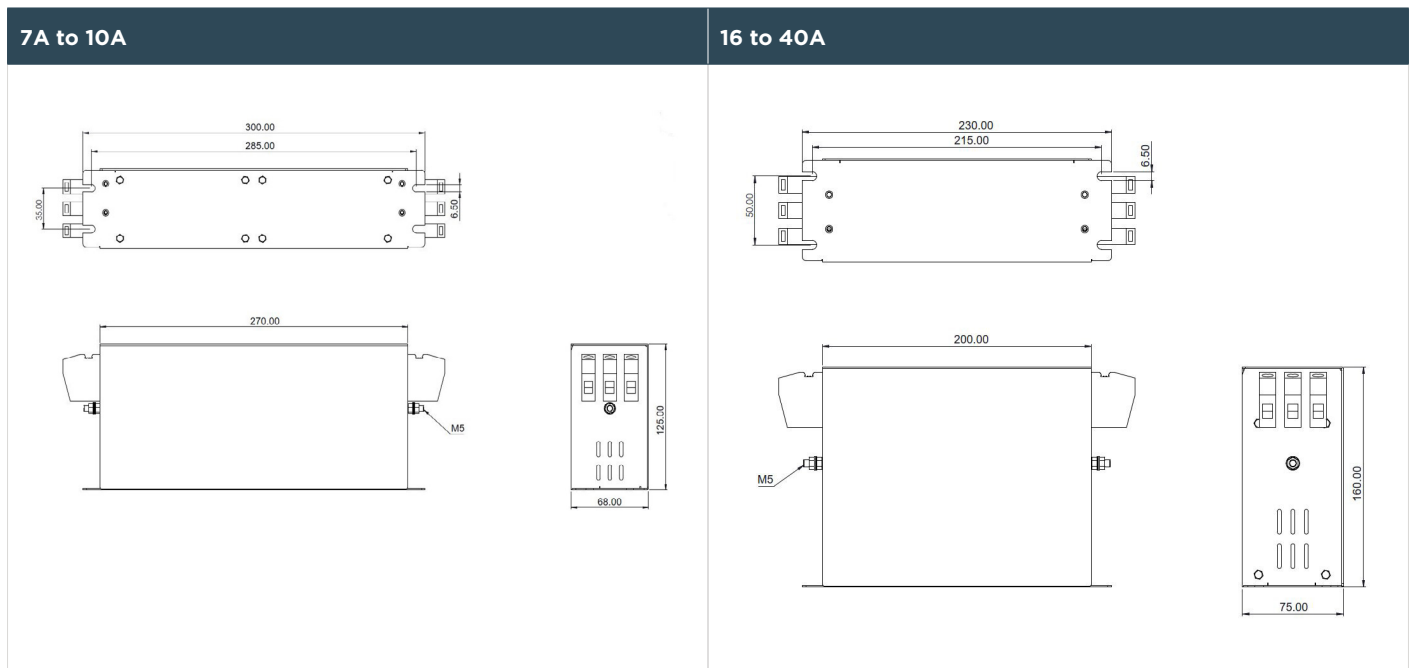
		Common Mode 50Ω/50Ω								
		Frequency in MHz								
		0.01	0.05	0.15	0.5	1	3	5	10	30
Current Rating	7A	10.3	24.9	36.3	46.9	45.9	49.1	58.5	38.5	16.6
	10A	8.0	22.0	32.0	40.0	39.0	42.0	52.0	30.0	10.0
	16A	6.0	20.0	30.0	35.0	37.0	39.0	40.0	25.0	15.0
	20A	4.0	18.0	26.0	35.0	34.0	37.0	41.0	23.0	14.0
	25A	3.9	17.5	28.8	34.6	34.9	38.2	46.4	30.2	16.1
	30A	2.5	16.0	26.0	31.0	32.0	34.0	40.0	30.2	15.0
	40A	1.0	10.0	20.0	29.0	30.0	37.0	52.0	32.0	17.0
	50A	0.0	7.2	16.8	27.9	32.6	42.1	55.9	37.1	20.9
	63A	0.3	7.2	14.0	25.0	30.0	38.0	49.0	35.0	19.0
	75A	0.1	3.6	12.9	23.7	25.9	35.1	48.4	33.7	22.1
	80A	0.2	2.5	8.0	10.0	21.0	31.0	42.0	25.0	13.0
	90A	0.1	1.0	5.0	7.0	18.0	24.0	34.0	22.0	15.0
	100A	0.1	0.5	2.8	8.1	13.2	25.1	44.5	24.3	14.6
	125A	0.1	0.5	3.0	6.0	14.0	24.0	40.0	25.0	12.0
	150A	0.1	0.3	4.0	7.0	12.0	26.0	38.0	20.0	10.0
180A	0.1	0.5	4.6	15.5	18.5	30.4	43.1	23.4	13.9	

# AHV Series

Single Stage Delta Configuration

		Differential Mode 50Ω/50Ω								
		Frequency in MHz								
		0.01	0.05	0.15	0.5	1	3	5	10	30
Current Rating	7A	13.9	33.2	66.5	68.4	73.2	88.8	78.1	77.9	46.1
	10A	10.0	25.0	58.0	65.0	66.0	79.0	70.0	65.0	36.0
	16A	7.0	20.0	50.0	67.0	61.0	72.0	65.0	61.0	25.0
	20A	11.0	19.0	48.0	70.0	63.0	65.0	60.0	58.0	22.0
	25A	14.7	21.5	54.7	77.5	65.5	56.3	54.3	55.0	18.2
	30A	13.0	25.0	40.0	65.0	67.0	46.0	50.0	48.0	24.0
	40A	10.0	24.0	34.0	65.0	68.0	43.0	50.0	46.0	27.0
	50A	14.8	26.6	38.8	64.3	58.2	49.6	47.4	44.6	36.0
	63A	16.0	29.0	42.0	55.0	50.0	41.0	45.0	40.0	30.0
	75A	23.7	34.0	71.8	64.0	55.1	46.3	43.8	41.1	32.3
	80A	18.0	24.0	64.0	42.0	38.0	40.0	31.0	26.0	18.0
	90A	19.0	26.0	60.0	47.0	40.0	35.0	32.0	29.0	18.0
	100A	25.7	39.1	62.1	48.1	41.3	33.4	30.9	28.3	21.9
	125A	18.0	30.0	68.0	37.0	44.0	35.0	25.0	22.0	16.0
	150A	20.0	28.0	60.0	40.0	33.0	29.0	21.0	18.0	14.0
180A	25.5	38.4	64.0	47.0	39.4	31.2	28.7	25.9	17.6	

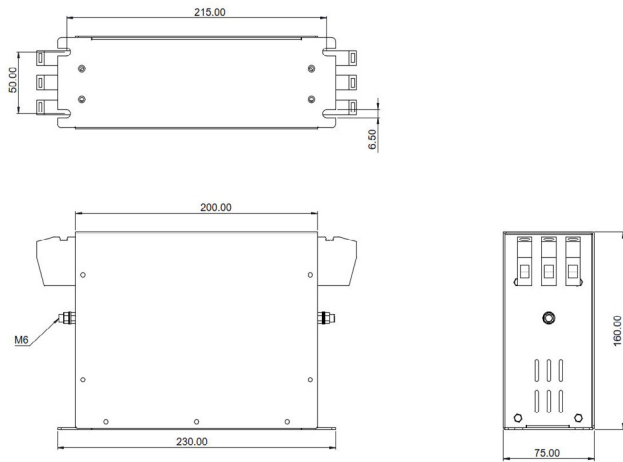
## Mechanical Diagram



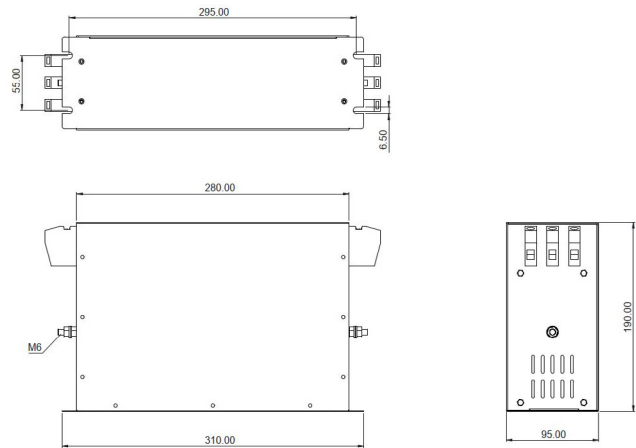
# AHV Series

## Single Stage Delta Configuration

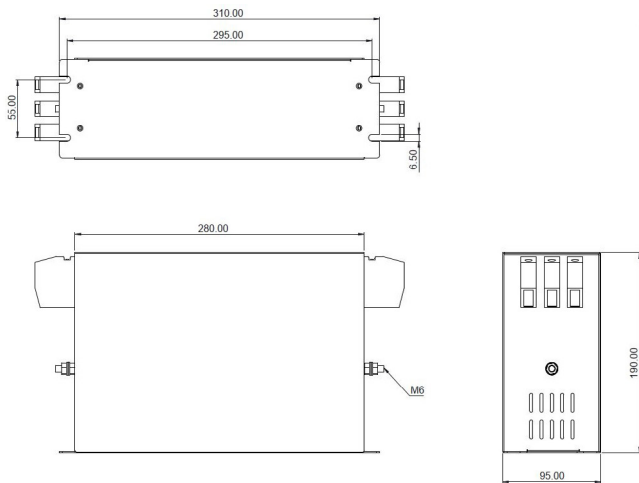
### 50A



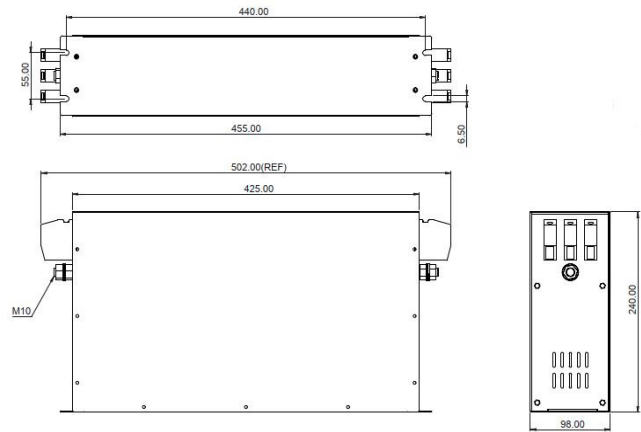
### 63A to 80A



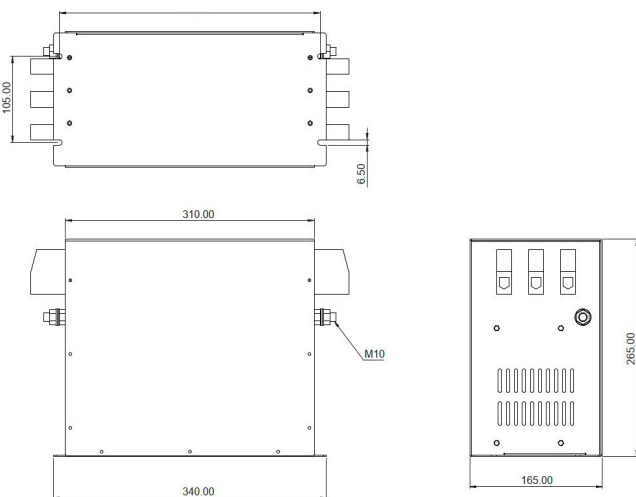
### 90A



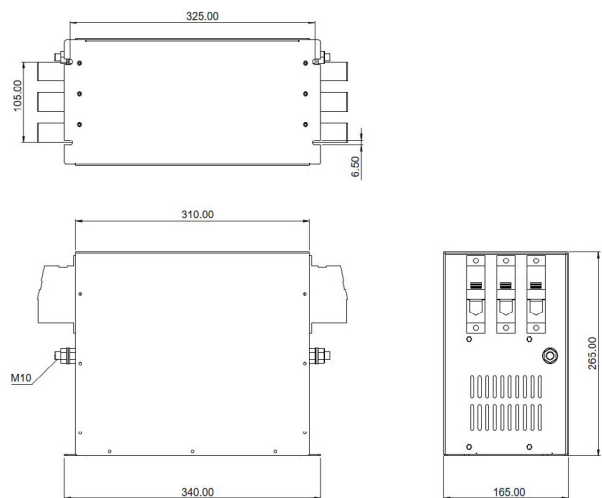
### 100A



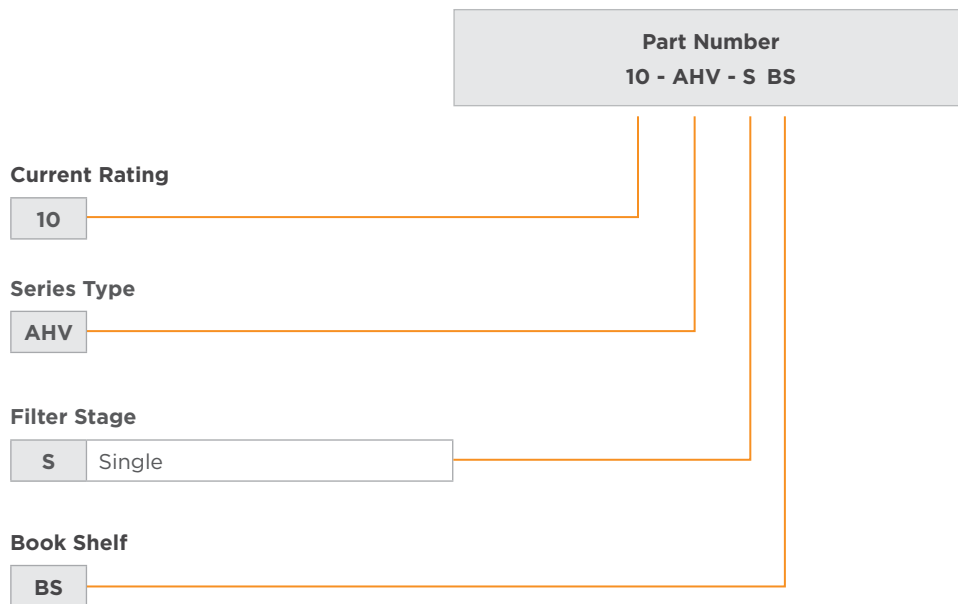
### 125A and 150A



### 180A



## HOW TO ORDER



## te.com

©2022 TE Connectivity. All Rights Reserved.

TE Connectivity, TE Connectivity (logo) and Every Connection Counts are trademarks. All other logos, products and/or company names referred to herein might be trademarks of their respective owners.

The information given herein, including drawings, illustrations and schematics which are intended for illustration purposes only, is believed to be reliable. However, TE Connectivity makes no warranties as to its accuracy or completeness and disclaims any liability in connection with its use. TE Connectivity's obligations shall only be as set forth in TE Connectivity's Standard Terms and Conditions of Sale for this product and in no case will TE Connectivity be liable for any incidental, indirect or consequential damages arising out of the sale, resale, use or misuse of the product. Users of TE Connectivity products should make their own evaluation to determine the suitability of each such product for the specific application.

08/22 TJ

# AHV SERIES

## THREE PHASE HIGH PERFORMANCE EMI FILTER

### Single stage delta configuration

#### INTRODUCTION

Chassis for motor drive applications requiring compact space and convenient installation with superior performance at significant interference levels

#### APPLICATIONS

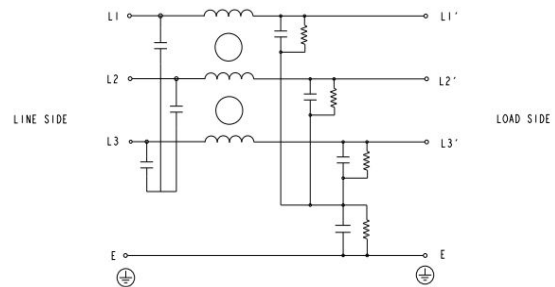
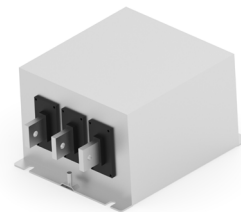
- IT power distribution network
- Three phase drives
- Renewable energy systems
- Process automation equipments
- Energy conversion devices

#### FEATURES

- Superior performance
- Compact
- Low leakage current
- Chassis mounting

#### APPROVALS & COMPLIANCE

- UL recognized as per UL 60939-3 and CSA22.2 No 8



TYPICAL CIRCUIT DIAGRAM

## Specifications

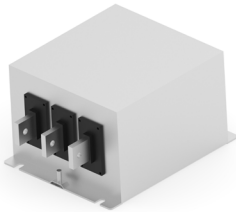
Electrical Characteristics	
Agency Rated Voltage	Line to Line: 760/750VAC
Current Ratings	6A to 1000A @ 40°C
Operating Frequency	50/60Hz
High Potential Test Voltage	Line to Ground: 3535VDC for 1 Minute
	Line to Line: 3268VDC for 1 Minute
Overload Capability	135% of Rated current for 15 minutes

## AHV Series

Single stage delta configuration

Functional Characteristics	
Operating Temperature Range	-25°C to +85°C
Climatic Category	25/85/21
Termination	Quick Connect (6A to 100A) Bolt & Nut (125A to 250A) Busbar (320A to 1000A)
Flammability Corresponding to	UL 94 V-0
Reference Standards	
Design Corresponding to	UL 60939-3 and CSA 22.2 No 8

### Selection Table - Standard Version



TE Ordering Number	Catalog Number	Rated Current @40°C	Rated Voltage @40°C	Leakage Current (mA)	Weight (Kgs)	Termination Type
2405081-1	6 AHV S FP	6A	760	2mA	3	1
2405081-2	10 AHV S FP	10A	760	2mA	3	1
2405081-3	16 AHV S FP	16A	760	2mA	3	1
2405081-4	20 AHV S FP	20A	760	2mA	3	1
2405081-5	25 AHV S FP	25A	760	2mA	4	1
2405081-6	30 AHV S FP	30A	760	2mA	4	1
2405081-7	40 AHV S FP	40A	760	2mA	4	1
2405081-8	50 AHV S FP	50A	760	2.5mA	5	1
2405081-9	60 AHV S FP	60A	760	3mA	5	1
1-2405081-0	75 AHV S FP	75A	760	3mA	5	1
1-2405081-1	80 AHV S FP	80A	760	3mA	7	1
1-2405081-2	90 AHV S FP	90A	760	3mA	7	2
1-2405081-3	100 AHV S FP	100A	760	3mA	7	2
1-2405081-4	125 AHV S FP	125A	760	3mA	10	M10 STUD
1-2405081-5	150 AHV S FP	150A	760	3mA	10	M12 STUD
1-2405081-6	180 AHV S FP	180A	760	3mA	10	M12 STUD



## AHV Series

Single stage delta configuration

TE Ordering Number	Catalog Number	Rated Current @40°C	Rated Voltage @40°C	Leakage Current (mA)	Weight (Kgs)	Termination Type
1-2405081-7	250 AHV S FP	250A	760	3mA	10	M12 STUD
1-2405081-8	300 AHV S FP	300A	760	3mA	15	BUSBAR 6 x 25mm
1-2405081-9	400 AHV S FP	400A	760	3mA	15	BUSBAR 6 x 25mm
2-2405081-0	500 AHV S FP	500A	760	3mA	18	BUSBAR 10 x 25mm
2-2405081-1	600 AHV S FP	600A	760	3mA	18	BUSBAR 10 x 25mm
2-2405081-2	700 AHV S FP	700A	760	3mA	23	BUSBAR 10 x 40mm
2-2405081-3	800 AHV S FP	800A	760	3mA	23	BUSBAR 10 x 40mm
2-2405081-4	1000 AHV S FP	1000A	760	3mA	23	BUSBAR 10 x 40mm

### Termination Type: Connectors Cross Section

	1	2	3	4
Range; Flexible (mm <sup>2</sup> )	0.5 - 16	10 - 25	16 - 50	35 - 95

### Insertion Loss (Typical) – Measured in Closed 50Ω System

		Common Mode 50Ω/50Ω								
		Frequency in MHz								
		0.01	0.05	0.15	0.5	1	3	5	10	30
Current Rating	6A	10.2	24.8	35.5	46.7	49.6	56.3	64.4	44.4	26.3
	10A	7	21	31	40	45	51	62	42	25
	16A	4	13	24	36	40	44	57	36	20
	20A	0.621	10.9	21.3	34.3	38.5	48.2	71.3	43.2	26.5
	25A	0.94	11.8	22	33.3	37	42.3	50.1	36.9	18
	30A	0.92	10.5	22	32	36	43	48	35	22
	40A	0.91	11.7	21.4	29.9	34.4	43.1	57.1	35.3	20.7
	50A	0.75	7.5	18	28	31	40	54	37	20
	60A	0.45	6	18	30	31	40	58	33	18
	75A	0.069	5.91	16.2	27.5	29.7	39.6	72.1	32.6	23.3

## AHV Series

Single stage delta configuration

		Common Mode 50Ω/50Ω								
		Frequency in MHz								
		0.01	0.05	0.15	0.5	1	3	5	10	30
Current Rating	80A	0.058	2.1	9.8	21	20	32	58	27	18
	90A	0.04	1.2	6.2	15	17	28	50	25	16
	100A	0.033	0.298	3.68	13	15.6	26.1	47	23.5	14.3
	125A	0.03	0.19	2.5	10	14	25	45	20	13
	150A	0.02	0.5	3	11	14	25	42	18	12
	180A	0.08	0.5	3.5	12	14	22	37	20	13
	250A	0.104	0.52	4.83	15.2	18.4	30.5	40.1	22.6	14
	300A	0.0165	0.0311	0.506	6.19	9.21	21.7	31.6	16.4	8.27
	400A	0.0165	0.0311	0.506	6.19	9.21	21.7	31.6	16.4	8.27
	500A	0.013	0.115	0.731	3.67	8.12	22.9	26.9	14.8	6.1
	600A	0.013	0.115	0.731	3.67	8.12	22.9	26.9	14.8	6.1
	700A	0.0051	0.0184	0.351	4.24	7.62	21.6	27.7	15.1	6.4
	800A	0.0051	0.0184	0.351	4.24	7.62	21.6	27.7	15.1	6.4
1000A	0.0051	0.0184	0.351	4.24	7.62	21.6	27.7	15.1	6.4	

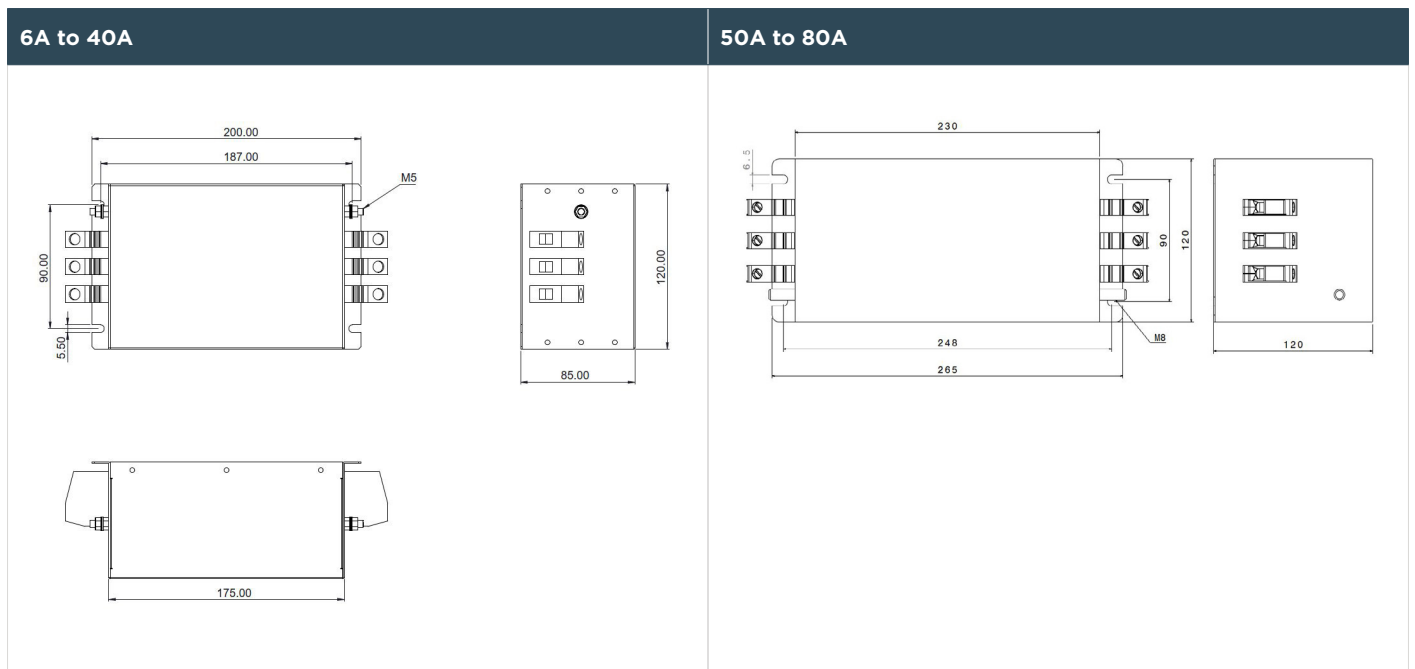
		Differential Mode 50Ω/50Ω								
		Frequency in MHz								
		0.01	0.05	0.15	0.5	1	3	5	10	30
Current Rating	6A	16.2	38.5	82.1	87.6	98.6	81.3	79.6	78.6	71.5
	10A	18	35	75	82	86	78	75	70	67
	16A	15	24	63	74	75	62	59	53	45
	20A	17.2	21.8	57	71.3	73.6	76.4	73.2	70.3	58.6
	25A	17.2	19.5	54	63.5	64.9	64.7	61.9	59.2	44.4
	30A	18	25	50	60	63	62	57	55	45
	40A	17.23	27.8	43.5	60.1	61.5	61.9	61.6	60.9	59.8
	50A	20	25	45	65	67	62	55	50	35
	60A	22	28	45	62	65	54	48	42	31
	75A	25.4	33.8	64.3	72.4	64.4	53.4	50.7	47.9	37.8
	80A	25	34	60	68	58	50	48	42	32
	90A	25	34	52	60	50	42	40	38	30

# AHV Series

Single stage delta configuration

		Differential Mode 50Ω/50Ω								
		Frequency in MHz								
		0.01	0.05	0.15	0.5	1	3	5	10	30
<b>Current Rating</b>	<b>100A</b>	25.6	38.8	46.2	55	47.6	39.3	36.9	34.3	26.4
	<b>125A</b>	22	36	42	50	42	35	36	30	22
	<b>150A</b>	23	36	45	51	40	31	33	32	20
	<b>180A</b>	22	35	48	53	45	32	30	29	20
	<b>250A</b>	25.6	38	51.5	55.8	48.6	40.4	37.8	35	24.4
	<b>300A</b>	25.5	38.8	49.5	46.2	38.7	30.3	27.6	24.8	17.1
	<b>400A</b>	25.5	38.8	49.5	46.2	38.7	30.3	27.6	24.8	17.1
	<b>500A</b>	25.5	39.1	51.6	43.1	36.2	28	25.3	22.6	15.1
	<b>600A</b>	25.5	39.1	51.6	43.1	36.2	28	25.3	22.6	15.1
	<b>700A</b>	25.5	39.4	58.4	45.3	37.8	29.5	26.9	24.2	17.3
	<b>800A</b>	25.5	39.4	58.4	45.3	37.8	29.5	26.9	24.2	17.3
	<b>1000A</b>	25.5	39.4	58.4	45.3	37.8	29.5	26.9	24.2	17.3

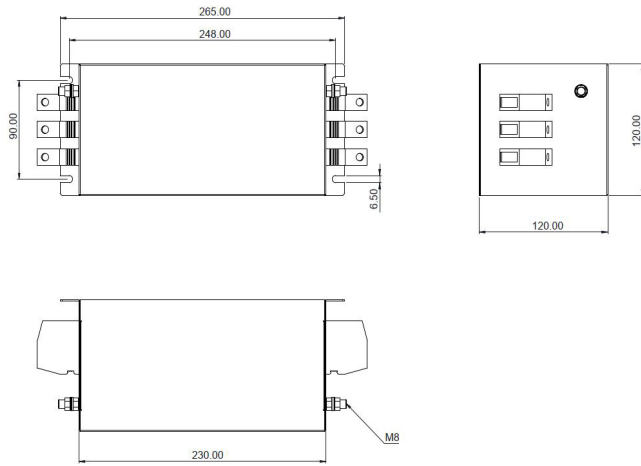
## Mechanical Diagram



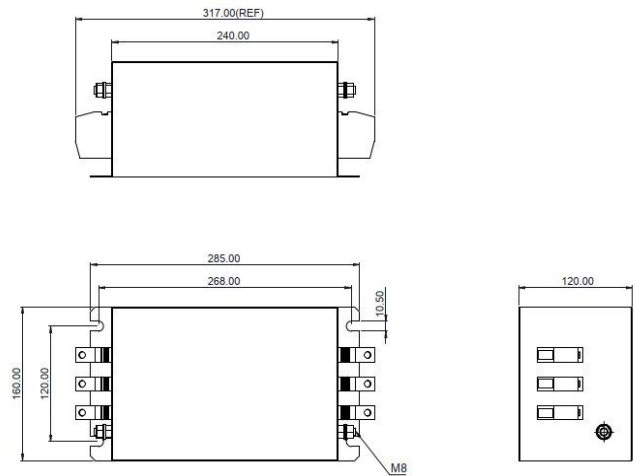
# AHV Series

Single stage delta configuration

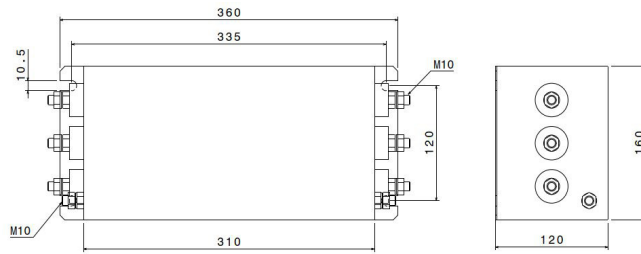
## 90A



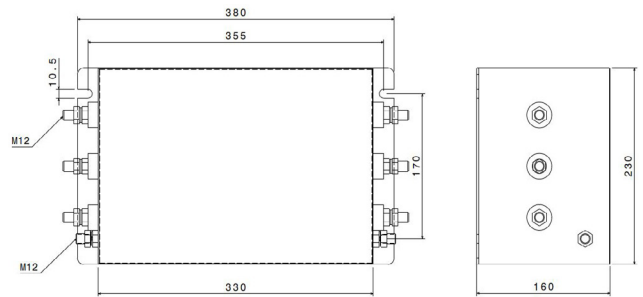
## 100A



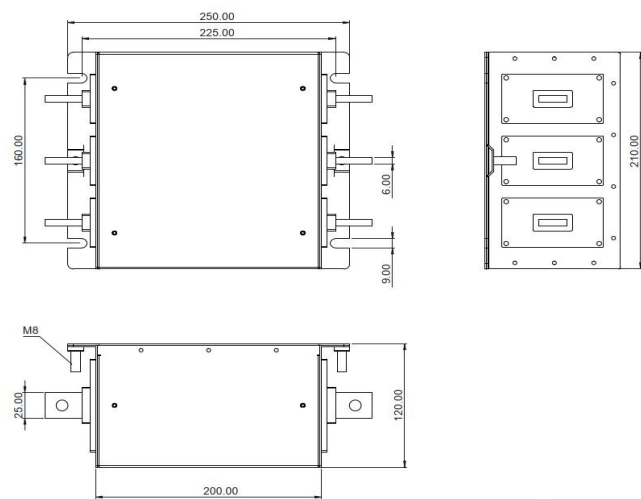
## 125A



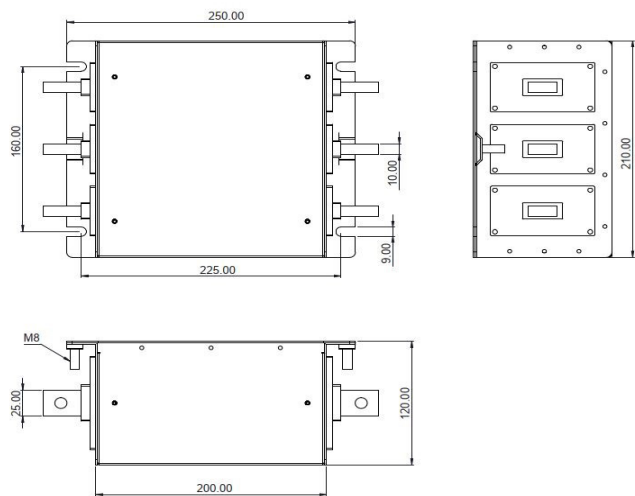
## 150A to 250A



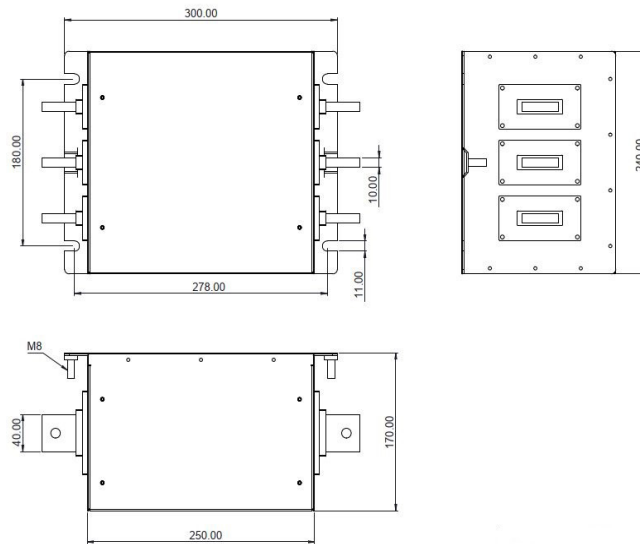
## 300A and 400A



## 500A and 600A



## 700A to 1000A



## HOW TO ORDER

**Part Number**  
**10 - AHV - S FP**

### Current Rating

10

### Series Type

AHV

### Filter Stage

S

Single

### Fully Potted

FP

**te.com**

©2022 TE Connectivity. All Rights Reserved.

TE Connectivity, TE Connectivity (logo) and Every Connection Counts are trademarks. All other logos, products and/or company names referred to herein might be trademarks of their respective owners.

The information given herein, including drawings, illustrations and schematics which are intended for illustration purposes only, is believed to be reliable. However, TE Connectivity makes no warranties as to its accuracy or completeness and disclaims any liability in connection with its use. TE Connectivity's obligations shall only be as set forth in TE Connectivity's Standard Terms and Conditions of Sale for this product and in no case will TE Connectivity be liable for any incidental, indirect or consequential damages arising out of the sale, resale, use or misuse of the product. Users of TE Connectivity products should make their own evaluation to determine the suitability of each such product for the specific application.

08/22 TJ

# AHV SERIES

## THREE PHASE VERY HIGH PERFORMANCE EMI FILTER

### Dual stage delta configuration

#### INTRODUCTION

Bookshelf design for motor drive applications requiring minimum space and convenient installation with superior performance at significant interference levels

#### APPLICATION

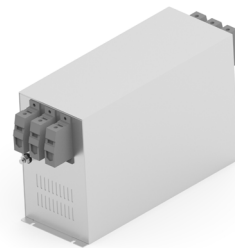
- IT power distribution network
- Three phase drives
- Renewable energy systems
- Process automation equipments
- Energy conversion devices

#### FEATURES

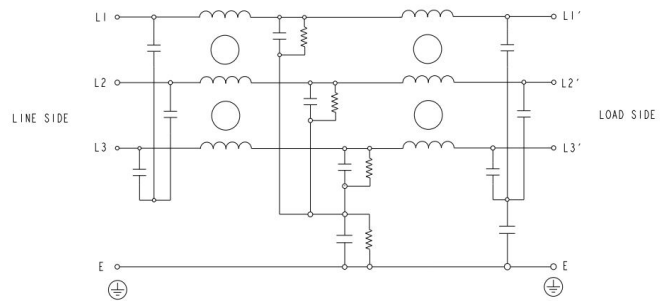
- Superior performance
- Compact
- Low leakage current
- Book shelf mounting

#### APPROVALS & COMPLIANCE

- UL recognized as per UL 60939-3 and CSA22.2 No 8



STANDARD



TYPICAL CIRCUIT DIAGRAM

### Specifications

Electrical Characteristics	
Agency Rated Voltage	Line to Line: 760/750VAC
Current Ratings	7A to 180A @ 40°C
Operating Frequency	50/60Hz
High Potential Test Voltage	Line to Ground: 3535VDC for 1 Minute
	Line to Line: 3268VDC for 1 Minute
Overload Capability	135% of Rated current for 15 minutes

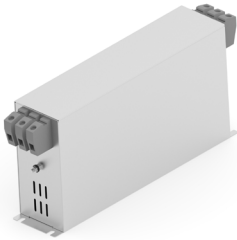
## AHV Series

### Dual Stage Delta Configuration

Functional Characteristics	
Operating Temperature Range	-25°C to +85°C
Climatic Category	25/85/21
Termination (Depends on Current Rating)	Quick Connect 7A to 180A
Flammability Corresponding to	UL 94 V-0

Reference Standards	
Design Corresponding to	UL 60939-3 and CSA 22.2 No 8

### Selection Table - Standard Version



TE Ordering Number	Catalog Number	Rated Current @40°C	Rated Voltage @40°C	Leakage Current (mA)	Weight (Kgs)	Termination
2405080-1	7 AHV D BS	7A	760	5mA	2	1
2405080-2	10 AHV D BS	10A	760	5mA	2	1
2405080-3	16 AHV D BS	16A	760	5mA	3	1
2405080-4	20 AHV D BS	20A	760	5mA	3	1
2405080-5	25 AHV D BS	25A	760	5mA	3	1
2405080-6	30 AHV D BS	30A	760	5mA	4	1
2405080-7	42 AHV D BS	42A	760	5mA	4	1
2405080-8	55 AHV D BS	55A	760	5mA	4	1
2405080-9	63 AHV D BS	63A	760	6mA	5	1
1-2405080-0	75 AHV D BS	75A	760	6mA	5	1
1-2405080-1	80 AHV D BS	80A	760	6mA	5	1
1-2405080-2	90 AHV D BS	90A	760	6mA	6	2
1-2405080-3	100 AHV D BS	100A	760	6mA	6	2
1-2405080-4	130 AHV D BS	130A	760	6mA	7	3
1-2405080-5	150 AHV D BS	150A	760	6mA	8	3
1-2405080-6	180 AHV D BS	180A	760	6mA	12	4

# AHV Series

Dual Stage Delta Configuration

## Termination Type: Connectors Cross Section

	1	2	3	4
Range; Flexible (mm <sup>2</sup> )	0.5 - 16	10 - 25	16 - 50	35 - 95

## Insertion Loss (Typical) – Measured in Closed 50Ω System

		Common Mode 50Ω/50Ω								
		Frequency in MHz								
		0.01	0.05	0.15	0.5	1	3	5	10	30
Current Rating	7A	14.1	28.7	64	78.3	77	68.3	60	48.1	37.8
	10A	12	21	60	80	70	62	56	45	25
	16A	10.5	15.6	58.3	97.9	79.6	61.4	54	44.2	19.5
	20A	9	12	55	80	75	57	52	42	15
	25A	8.28	10.9	50.4	76.6	80.1	62.6	55.6	44.5	30.4
	30A	5.6	7	35	60	68	57	44	32	18
	42A	2.3	5.6	27.2	60	65	52	42	30	20
	55A	1.03	9.65	25.7	58.9	73.4	63.4	56.4	47.6	44.8
	63A	0.88	5.2	23.4	57	68	58	52	42	38
	75A	0.75	3.5	19.5	51	62	55	48	35	22
	80A	0.52	2	10	35	40	47	41	30	18
	90A	0.3	1.2	6	28	41	50	40	28	20
	100A	0.178	0.794	4.29	18.3	30.5	51.2	45.9	39.9	25.5
	130A	0.16	0.9	4.5	20	32	55	40	32	20
	150A	0.15	1.1	4.5	22	35	55	38	30	21
180A	0.162	1.27	4.73	33.5	41.6	54.4	48.3	40.8	25.3	

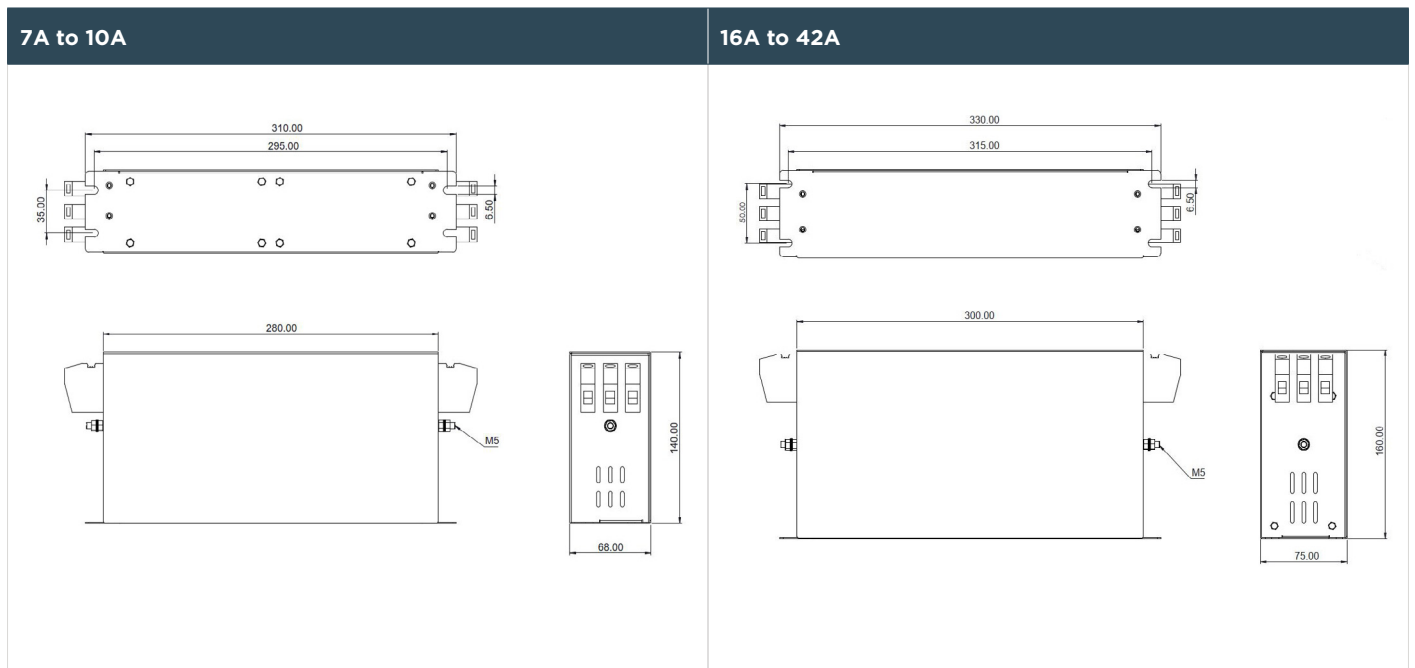


# AHV Series

## Dual Stage Delta Configuration

		Differential Mode 50Ω/50Ω								
		Frequency in MHz								
		0.01	0.05	0.15	0.5	1	3	5	10	30
Current Rating	7A	16.2	34.7	60.4	58.4	57.9	56.6	55.7	54.4	46.2
	10A	18	28	55	56	62	60	57	50	42
	16A	17.1	22.9	70.1	77.3	80.4	80.8	79.6	79.5	57.6
	20A	18	20	55	50	62	65	60	50	32
	25A	17.7	18.6	34.7	23.5	17.5	12.2	7.4	9.6	25.5
	30A	15	18	27	62	68	20	18	15	12
	42A	12	25	30	65	68	18	14	13	10
	55A	18.2	27	32.6	80.3	97.4	78.6	75.3	72.4	63.8
	63A	16	25	29	75	80	70	68	64	42
	75A	13.6	22.3	27	70	76	67	63	61	37
	80A	10	18	24	67	70	55	50	47	31
	90A	12	22	28	57	60	50	45	38	24
	100A	29	40.4	61.4	65	53.8	45	42.6	40.1	32.3
	130A	25	35	58	67	55	47	41	38	30
	150A	25	37	60	63	56	48	42	40	27
180A	29	38.3	65	65	58.4	50.87	48.4	45.8	37	

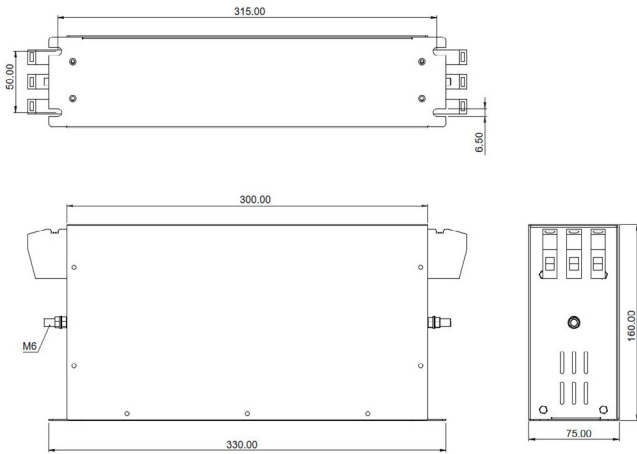
## Mechanical Diagram



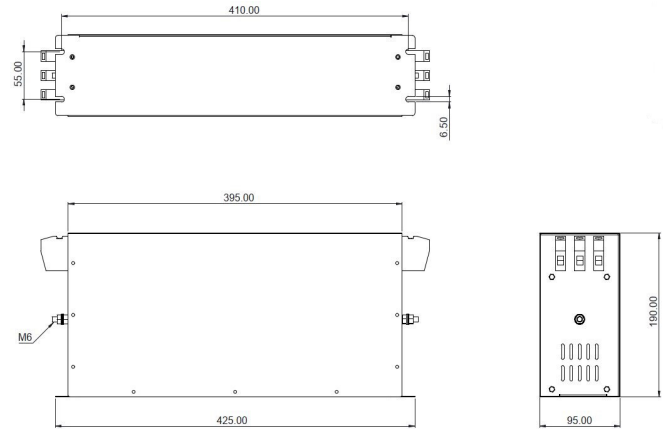
# AHV Series

## Dual Stage Delta Configuration

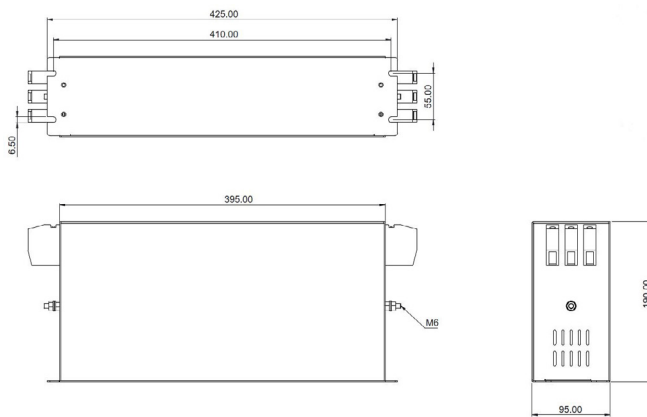
### 55A



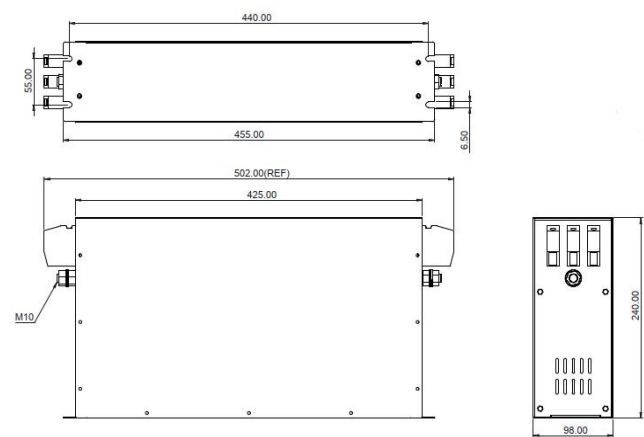
### 63A to 80A



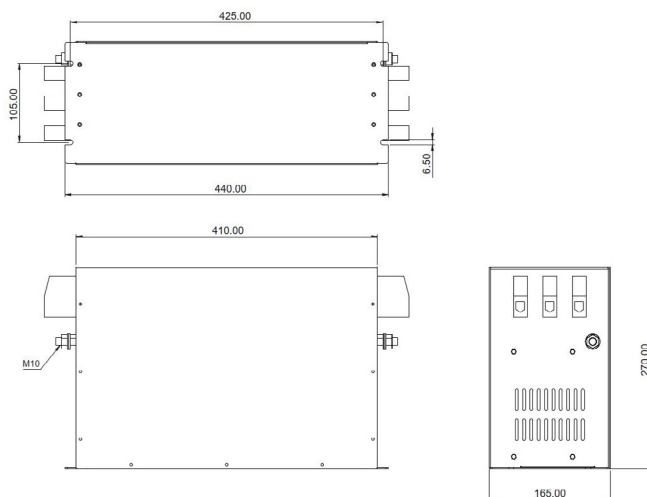
### 90A



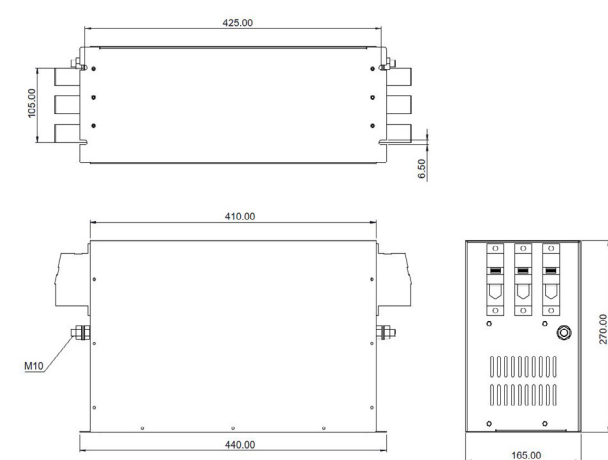
### 100A



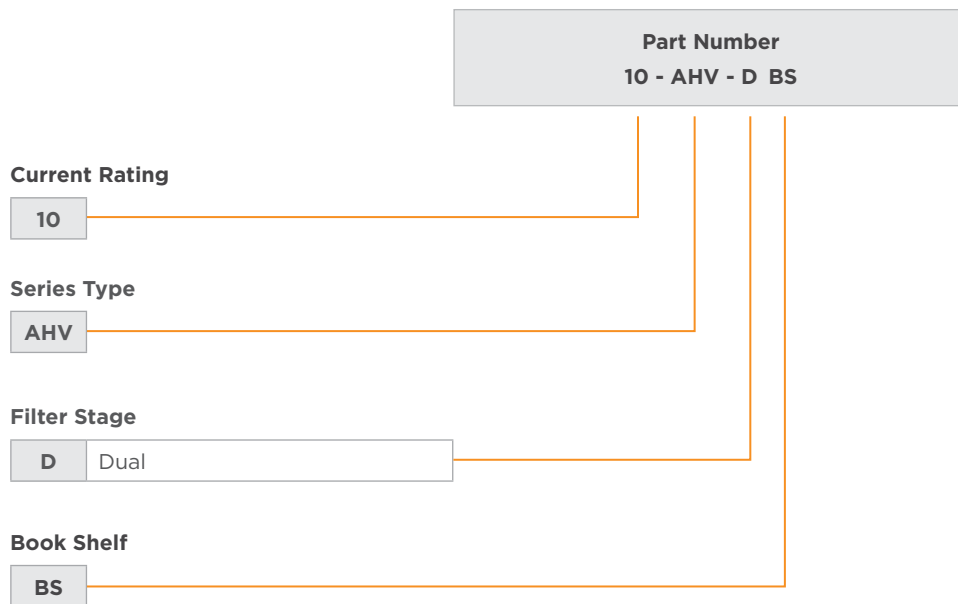
### 130A and 150A



### 180A



## HOW TO ORDER



## te.com

©2022 TE Connectivity. All Rights Reserved.

TE Connectivity, TE Connectivity (logo) and Every Connection Counts are trademarks. All other logos, products and/or company names referred to herein might be trademarks of their respective owners.

The information given herein, including drawings, illustrations and schematics which are intended for illustration purposes only, is believed to be reliable. However, TE Connectivity makes no warranties as to its accuracy or completeness and disclaims any liability in connection with its use. TE Connectivity's obligations shall only be as set forth in TE Connectivity's Standard Terms and Conditions of Sale for this product and in no case will TE Connectivity be liable for any incidental, indirect or consequential damages arising out of the sale, resale, use or misuse of the product. Users of TE Connectivity products should make their own evaluation to determine the suitability of each such product for the specific application.

08/22 TJ

# AHV SERIES

## THREE PHASE VERY HIGH PERFORMANCE EMI FILTER

### Dual stage delta configuration

#### INTRODUCTION

Chassis for motor drive applications requiring compact space and convenient installation with superior performance at significant interference levels

#### APPLICATIONS

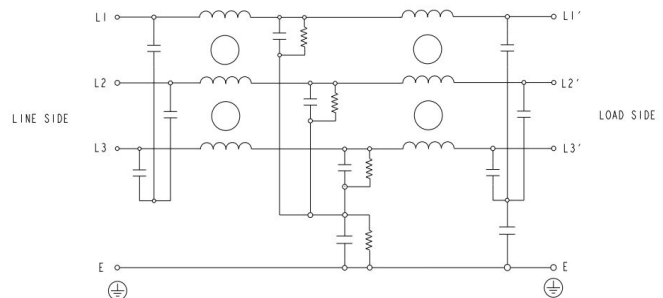
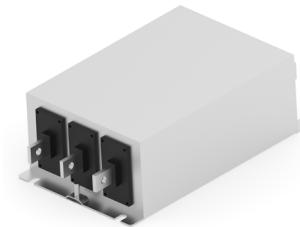
- IT power distribution network
- Three phase drives
- Renewable energy systems
- Process automation equipments
- Energy conversion devices

#### FEATURES

- Superior performance
- Compact
- Low leakage current
- Chassis mounting

#### APPROVALS & COMPLIANCE

- UL recognized as per UL 60939-3 and CSA22.2 No 8



TYPICAL CIRCUIT DIAGRAM

### Specifications

Electrical Characteristics	
Agency Rated Voltage	Line to Line: 760/750VAC
Current Ratings	7A to 1000A @ 40°C
Operating Frequency	50/60Hz
High Potential Test Voltage	Line to Ground: 3535VDC for 1 Minute
	Line to Line: 3268VDC for 1 Minute
Overload Capability	135% of Rated current for 15 minutes

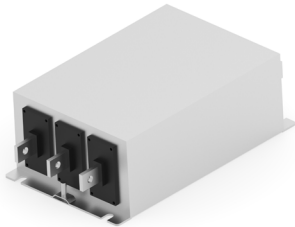
## AHV Series

### Dual Stage Delta Configuration

Functional Characteristics	
Operating Temperature Range	-25°C to +85°C
Climatic Category	25/85/21
Termination	Quick Connect (7A to 100A) Bolt & Nut (125A to 250A) Busbar (300A to 1000A)
Flammability Corresponding to	UL 94 V-0

Reference Standards	
Design Corresponding to	UL 60939-3 and CSA22.2 No 8

### Selection Table - Standard Version



TE Ordering Number	Catalog Number	Rated Current @40°C	Rated Voltage @40°C	Leakage Current (mA)	Weight (Kgs)	Termination Type
2405082-1	6 AHV D FP	6A	760	4mA	4	1
2405082-2	10 AHV D FP	10A	760	4mA	4	1
2405082-3	16 AHV D FP	16A	760	4mA	4	1
2405082-4	20 AHV D FP	20A	760	4mA	4	1
2405082-5	25 AHV D FP	25A	760	4mA	5	1
2405082-6	30 AHV D FP	30A	760	4mA	5	1
2405082-7	40 AHV D FP	40A	760	4mA	5	1
2405082-8	50 AHV D FP	50A	760	5mA	6	1
2405082-9	63 AHV D FP	63A	760	6mA	6	1
1-2405082-0	75 AHV D FP	75A	760	6mA	6	1
1-2405082-1	80 AHV D FP	80A	760	6mA	8	1
1-2405082-2	90 AHV D FP	90A	760	6mA	8	2
1-2405082-3	100 AHV D FP	100A	760	6mA	8	2
1-2405082-4	125 AHV D FP	125A	760	6mA	11	M10 STUD
1-2405082-5	150 AHV D FP	150A	760	6mA	12	M12 STUD
1-2405082-6	180 AHV D FP	180A	760	6mA	12	M12 STUD

# AHV Series

## Dual Stage Delta Configuration

TE Ordering Number	Catalog Number	Rated Current @40°C	Rated Voltage @40°C	Leakage Current (mA)	Weight (Kgs)	Termination Type
1-2405082-7	250 AHV D FP	250A	760	6mA	12	M12 STUD
1-2405082-8	320 AHV D FP	320A	760	6mA	18	BUSBAR 6 x 25mm
1-2405082-9	400 AHV D FP	400A	760	6mA	18	BUSBAR 6 x 25mm
2-2405082-0	500 AHV D FP	500A	760	6mA	21	BUSBAR 10 x 25mm
2-2405082-1	600 AHV D FP	600A	760	6mA	21	BUSBAR 10 x 25mm
2-2405082-2	700 AHV D FP	700A	760	6mA	26	BUSBAR 10 x 40mm
2-2405082-3	800 AHV D FP	800A	760	6mA	26	BUSBAR 10 x 40mm
2-2405082-4	1000 AHV D FP	1000A	760	6mA	26	BUSBAR 10 x 40mm

### Termination Type: Connectors Cross Section

	1	2	3	4
Range; Flexible (mm <sup>2</sup> )	0.5 - 16	10 - 25	16 - 50	35 - 95

### Insertion Loss (Typical) – Measured in Closed 50Ω System

		Common Mode 50Ω/50Ω								
		Frequency in MHz								
		0.01	0.05	0.15	0.5	1	3	5	10	30
Current Rating	6A	15	35	65	85	75	54	46	32	22
	10A	15.3	32.7	65.5	85.5	78.4	64.1	56.1	45.1	34.4
	16A	10	30	50	80	75	65	52	42	34
	20A	5	20	45	75	78	63	56	40	28
	25A	3.98	12.1	39.2	70.5	74	57.3	49.5	37.7	31.2
	30A	3.24	12.1	36.3	61.8	73.3	62.4	55.3	45.9	35.2
	40A	3.5	12.6	34	58	71	57.8	50.21	38	29.7
	50A	5	12	35	62	70	60	50	45	32
	63A	4	11	32	65	68	55	45	32	22
	75A	3	9.5	28	60	57	51	41	35	20

# AHV Series

## Dual Stage Delta Configuration

		Common Mode 50Ω/50Ω								
		Frequency in MHz								
		0.01	0.05	0.15	0.5	1	3	5	10	30
Current Rating	80A	2.75	8	30	57	60	48	38	31	22
	90A	2.1	6	28	57	56	45	36	34	24
	100A	1.85	3.5	12	38	48	41	32	30	21
	125A	0.225	3.01	7.7	28.6	42.3	55.6	50.9	42.6	24.4
	150A	0.185	2.2	7	25	38	41	38	34	26
	180A	0.145	1.75	6.5	35	39	42	36	30	20
	250A	0.155	1.28	4.89	32.6	42.4	40.9	35.9	29	17
	320A	0.088	0.144	1.6	16.9	24.7	55.9	46.7	27	15.6
	400A	0.088	0.144	1.6	16.9	24.7	55.9	46.7	27	15.6
	500A	0.028	0.262	1.97	11.1	21.6	38.6	35	28.3	17.6
	600A	0.028	0.262	1.97	11.1	21.6	38.6	35	28.3	17.6
	700A	0.094	0.176	1.29	12.9	20.7	50.8	43.3	25	14.7
	800A	0.094	0.176	1.29	12.9	20.7	50.8	43.3	25	14.7
1000A	0.094	0.176	1.29	12.9	20.7	50.8	43.3	25	14.7	

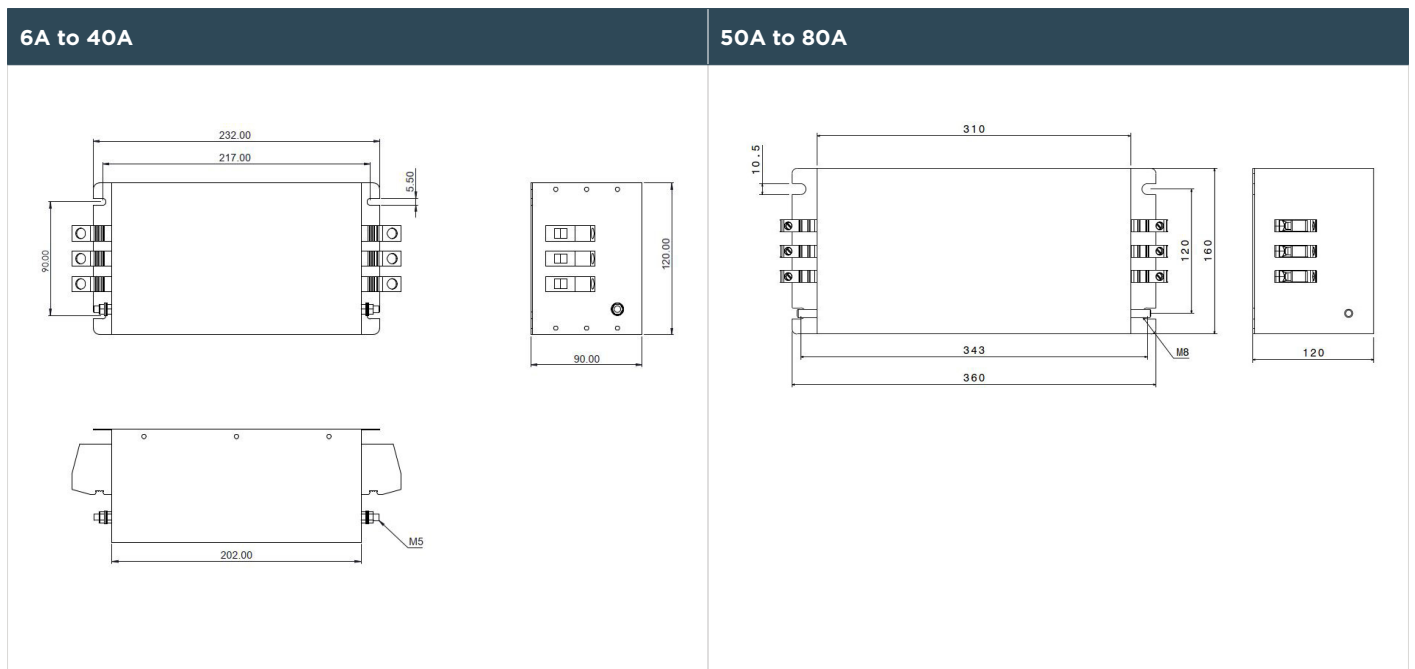
		Differential Mode 50Ω/50Ω								
		Frequency in MHz								
		0.01	0.05	0.15	0.5	1	3	5	10	30
Current Rating	6A	19	46	75	75	78	80	78	75	55
	10A	18.3	61.8	72.2	72.9	75.4	80.6	81.8	82.8	60.3
	16A	18	25	68	72	70	74	66	54	52
	20A	20	25	62	68	66	57	54	52	43
	25A	20.2	23.7	59.3	63.5	64.6	64.3	64.4	61	58.2
	30A	20.6	24.1	73.9	85.1	99.1	82	79.7	79.4	69.6
	40A	38.5	25.8	55.6	57.8	59.4	58.6	58.2	54.2	49.9
	50A	20	25	70	80	75	70	65	45	40
	63A	22	25	70	75	65	62	59	53	42
	75A	20	22	67	70	65	61	54	51	36
	80A	18	33	52	68	64	58	51	40	26
	90A	17	33	49	68	62	56	49	38	21

# AHV Series

## Dual Stage Delta Configuration

		Differential Mode 50Ω/50Ω								
		Frequency in MHz								
		0.01	0.05	0.15	0.5	1	3	5	10	30
Current Rating	100A	16	35	50	65	62	54	42	36	17
	125A	29	37.6	67.9	71.4	67.1	59.8	57.2	54.2	44
	150A	30	42	63	73	66	64	65	50	40
	180A	26	38	60	68	64	60	55	48	40
	250A	28.9	38.2	60.8	65.9	61.4	54.3	52	49.4	41.5
	320A	29.5	41.7	47.8	61.3	50.5	41	37.9	34.6	25.9
	400A	29.5	41.7	47.8	61.3	50.5	41	37.9	34.6	25.9
	500A	29.6	42.5	55	53.1	46.4	37.4	36.3	32.6	24.9
	600A	29.6	42.5	55	53.1	46.4	37.4	36.3	32.6	24.9
	700A	31.3	43.7	56.7	54.4	46.4	36.7	35	31.5	23
	800A	31.3	43.7	56.7	54.4	46.4	36.7	35	31.5	23
	1000A	31.3	43.7	56.7	54.4	46.4	36.7	35	31.5	23

## Mechanical Diagram

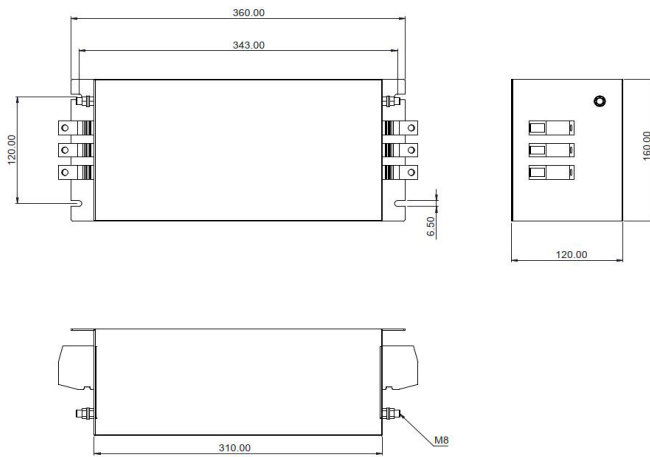




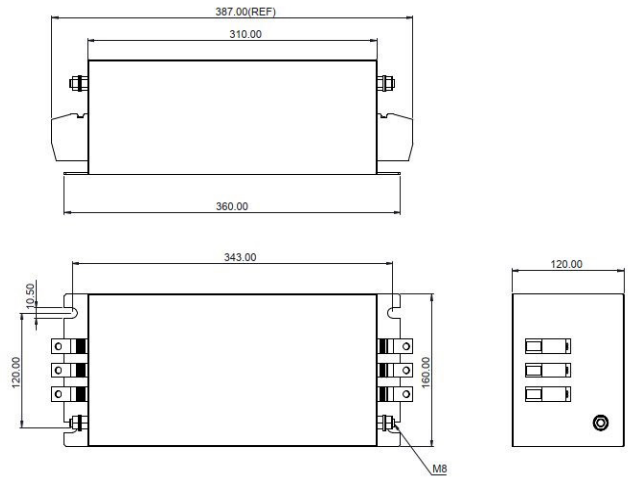
# AHV Series

## Dual Stage Delta Configuration

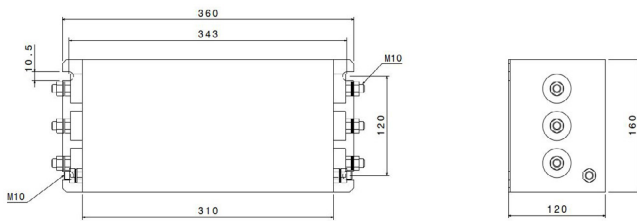
### 90A



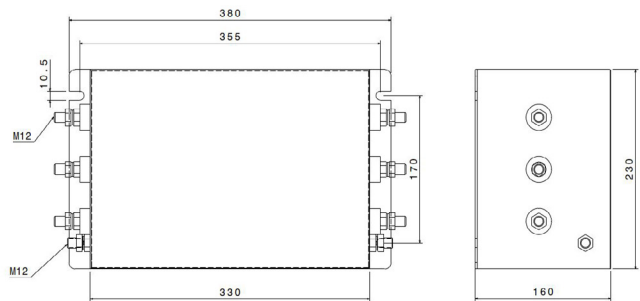
### 100A



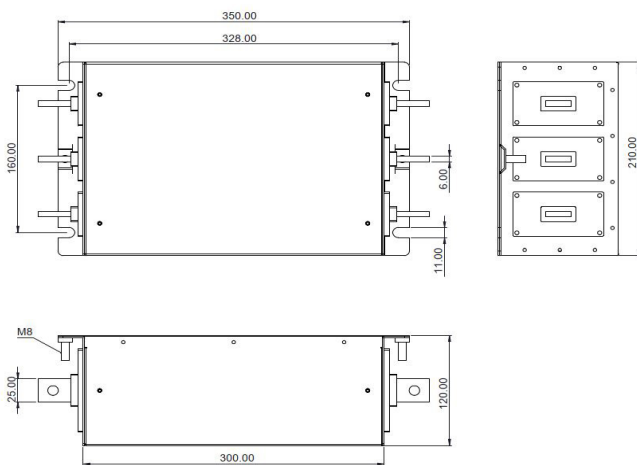
### 125A



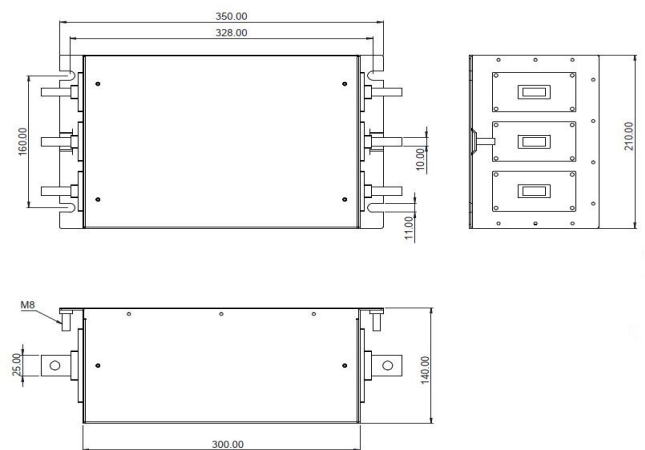
### 150A to 250A



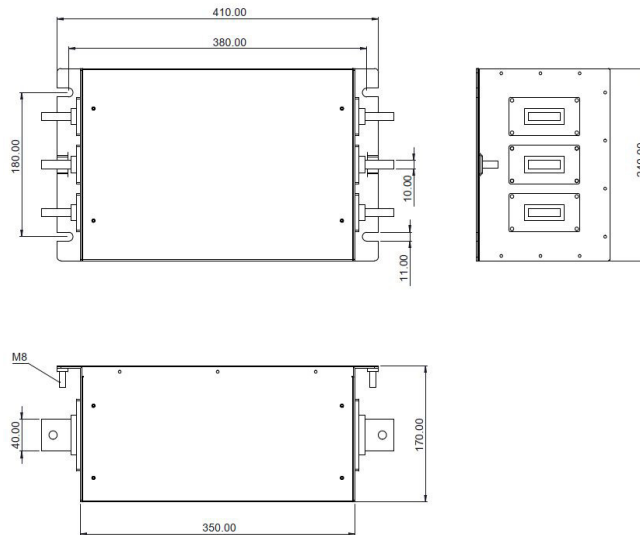
### 320A to 400A



### 500A to 600A



## 700A to 1000A



## HOW TO ORDER

**Part Number**  
**10 - AHV - D FP**

### Current Rating

10

### Series Type

AHV

### Filter Stage

D

Dual

### Fully Potted

FP

**te.com**

©2022 TE Connectivity. All Rights Reserved.

TE Connectivity, TE Connectivity (logo) and Every Connection Counts are trademarks. All other logos, products and/or company names referred to herein might be trademarks of their respective owners.

The information given herein, including drawings, illustrations and schematics which are intended for illustration purposes only, is believed to be reliable. However, TE Connectivity makes no warranties as to its accuracy or completeness and disclaims any liability in connection with its use. TE Connectivity's obligations shall only be as set forth in TE Connectivity's Standard Terms and Conditions of Sale for this product and in no case will TE Connectivity be liable for any incidental, indirect or consequential damages arising out of the sale, resale, use or misuse of the product. Users of TE Connectivity products should make their own evaluation to determine the suitability of each such product for the specific application.

08/22 TJ