

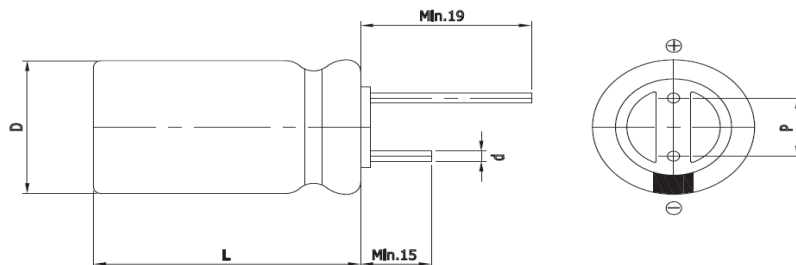
## Features

### EDLC (Electric Double Layer Capacitor)

- High Power Density
- Over 500,000 cycle life (semi-permanent)
- Higher energy density compared with 2.7V caps
- RoHS compliant
- Long-term reliability improved at high temperature and humidity



## Drawing



D (Φ)	18.0 +1.0 Max
L (mm)	40.0 ±1.5
d (Φ)	0.8 ±0.1
P (mm)	7.5 ±0.5

## Specification

Item		Characteristics	
Product series		EDLC	
Rated Voltage ( $V_R$ )		3.0V	
Operating Temperature		-40 ~ +65°C	
Capacitance Tolerance		-10 ~ +30%	
High Temperature Load Life		After 1,000 hours at $V_R$ loaded under +65°C, capacitors meet the following criteria.	
		Capacitance Change	≤ 30% of initial value
		ESR	≤ 2 times of specified value
		85°C Temperature	Max. 2.4V
Cycle Life Characteristics	Cycle	Over 500,000	
	$\Delta C$	≤ 30% of initial value	
	ESR	≤ 2 times of specified value	
	Method	Cycle of Charge/discharge from $V_R$ to $1/2V_R$	
Shelf Life		3 Years No Electrical Charge, Temperature below 25°C ( $\Delta C$ : ≤ 10% of initial value / $\Delta ESR$ : ≤ 50% of specified value)	

Part Number	Rated Voltage (V)	Capacitance (F)	ESR (mΩ)		Max. Current (A)	Leakage Current (mA, 72hr)		Size (mm) D x L
			AC(1kHz)	DC		@2.7V	@3.0V	
WEC 3R0 506 QG	3.0	50	13	20	37.0	0.100	0.150	18 x 40

\* Max. Current : 1 sec. discharge to  $1/2V_R$

Version 1.3 2021.02.01.