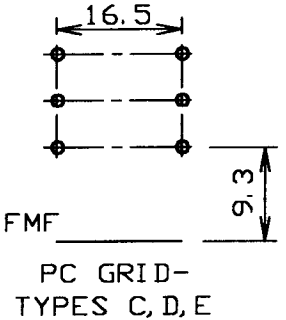
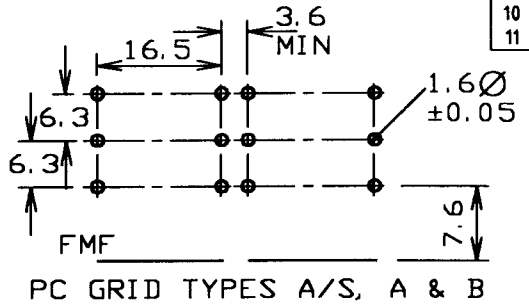
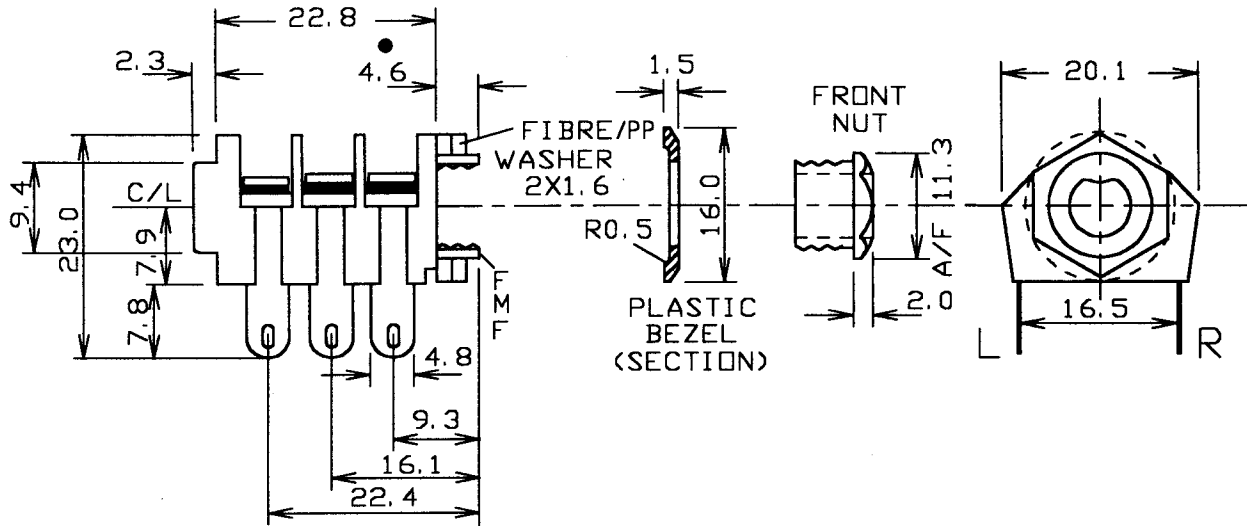


ISS	AMEND	DATE
1	REDRAWN	11/1/91
2	REDRAWN	15/6/92
3	PC-C ADDED	4/12/92
4	DIMS CORRECT	18/8/94
5	T TYPE ADD	15/3/95
6	PCA/S REDRAWN	13/4/95
7	PCA SPIKY ADD	8/1/96
8	DIMS CORRECT	20/2/96
9	SEE MOD 0214	9/8/96
10	SEE MOD 0221	14/3/97
11	WASHER MTL	29/6/01



OPTION
S4P HAS COMBINED NUT & BEZEL MADE FROM PLASTIC MATT BLACK FINISH.

NOTE
S4T JACKS HAVE ALL CONTACTS PLATED WITH LOW LOSS FINISH.

← BACK OF SOCKET		→ FRONT OF SOCKET		
<p>SPECIAL REVERSED CUT CONTACT</p> <p>12.5 TO C/L</p> <p>(12.5 = SPECIAL)</p>	<p>12.5 TO C/L</p> <p>1.3 WIDE</p> <p>(12.5 = SPECIAL)</p>	<p>10.0 TO C/L</p> <p>1.3 WIDE</p>	<p>1.3 WIDE</p> <p>4.1</p>	<p>4.3</p> <p>1.3 WIDE</p>
PCA/S/REV	PC TYPE A/S	PC TYPE A	PC TYPE B	PC TYPE C
<p>10.0 TO C/L</p> <p>5.7</p> <p>PRODUCED BY CUTTING FROM A STD. SOLDER TAG TYPE</p>	<p>1.30 (x2)</p> <p>4.3 (x2)</p> <p>0.80</p> <p>0.85 (x2)</p> <p>R0.90 (x2)</p> <p>1.4 (x2)</p> <p>16.8 ± 0.2</p>	<p>15mm TO C/L</p> <p>1.3 WIDE</p> <p>4.0</p>	<p>17.5 TO C/L</p> <p>1.3 WIDE</p> <p>4.0</p>	
PCA "SPIKY"	PC-C 'KINKED'	PC TYPE D	PC TYPE E	

NOTE
'REVERSED CONTACT' HAS LONG CONTACTS ON L AND SHORT ON R.

FOR KINKED LEG JACK SOCKETS, USE 1.5 ± 0.05Ø P.C.B. HOLE.

MAX PANEL THICKNESS 4.3mm

Tolerance	
NO DEC. PLACE ±	
1 DEC. PLACE ± 0.2	
2 DEC. PLACE ±	
DIA. HOLES ±	
ANGLES ± 1/2°	
UNLESS OTHERWISE STATED	

DIMENSIONS IN MILLIMETERS UNLESS OTHERWISE STATED. WORK TO DIMENSIONS. DO NOT SCALE DRAWING. 3rd ANGLE PROJECTION. REMOVE BURRS. IF IN DOUBT ASK.

WHERE USED F.R.
SCALE N.T.S.

Cliff Electronic Components, Inc. 4876 East Second Street, Benicia, CA 94510 USA Tel: (707) 746 8090 Fax: (707) 746 8092	MATERIAL NYLON / NIAG / FIBRE / PP		TITLE S4 JACK SOCKET	
	FINISH AS MOULDED / MICROFINISH		DRWG. No. CL 128205/1348	
DRAWN C.A.M.J.	APPD. RWT	FORM: A4DRWGH		