

- 1
- 2
- 3
- 4
- 5
- 6
- 7
- 8
- 9
- 10
- 11
- 12
- 13
- 14
- 15
- 16
- 17
- 18

**MATERIAL**

Polyamide based (PA) technopolymer, in 4 standard colours: black, orange, grey, red, matte finish.

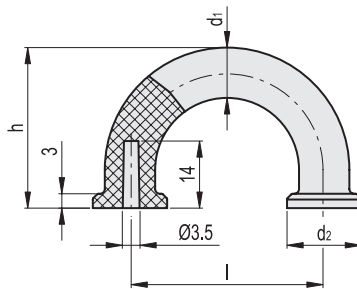
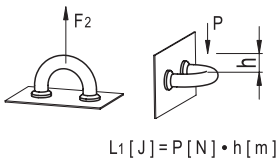
**STANDARD EXECUTION**

Blind holes for fitting by means of no. 2 self-tapping screws for plastic materials Ø3.5 (UNI ISO 7049), not included in the supply.

Maximum tightening torque of the self-tapping screws 1,2 [Nm].

**TECHNICAL DATA**

Tensile stress and impact strength: the values F2 and L1 indicated in the table were obtained during breaking tests carried out with the appropriate dynamometric equipment under the test conditions shown in the figure with ambient temperature.



Conversion Table	
1 mm = 0,039 inch	
d1	
mm	inch
9	0.35
10	0.39

\* Complete with colour index, example: 138201-C2 MFH-30-AF 3.5-C2

- C9  
 RAL9005
- C2  
 RAL2004
- C3  
 RAL7035
- C6  
 RAL3000

Code	Description	l	d1	d2	h	F2 [N]	L1 [J]	⚖️
138201-*	MFH-30-AF 3,5-*	29.5	9	12	27	2300	6	6
138221-*	MFH-40-AF 3,5-*	39.5	10	15	33.5	2300	10	9