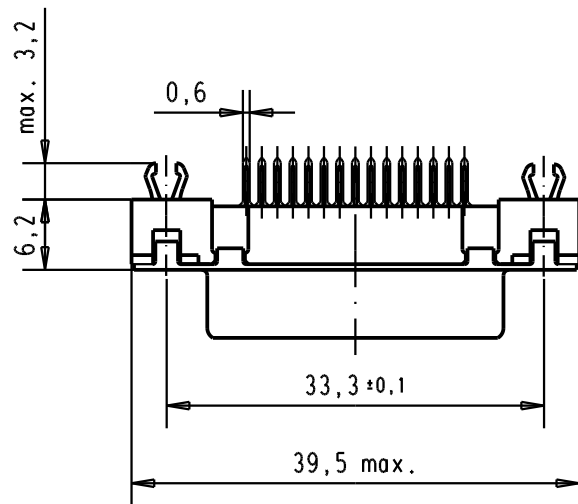
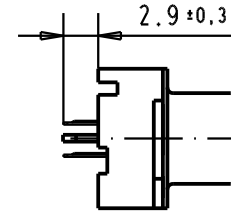
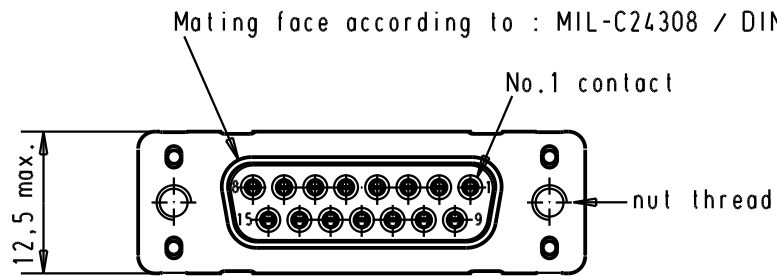
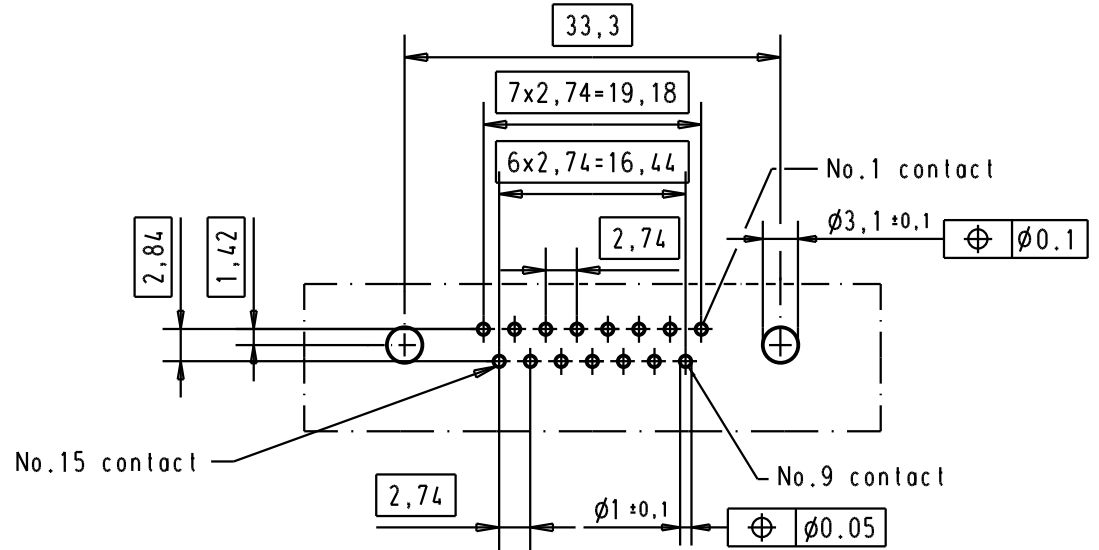


5 4 3 2 1





Printed board layout component side



Connector retention and insertion forces on the PCB = 25 / 80 newtons

A

09 66 255 3511	M3	1								 All Dim. in mm Orig. Size DIN A 4	D-sub, High temperature, 15 poles, female, straight, with solder pins 2.9, nuts and grounding board lock	Maßstab/ Scale 1,5:1
09 66 255 6511	M3	2				Detail.	05/03/02	CV				
09 66 255 7511	M3	3				Insp.						
09 66 255 3512	4-40 UNC	1				Stand.						
09 66 255 6512	4-40 UNC	2	31892	05/05/04	JH	HARTING EURL F-95972 Paris				TB 09 66 255 x51x	Blatt / Page 1 /	
09 66 255 7512	4-40 UNC	3	29723	05/03/02	CV							
Part number	Nut thread	Performance level	Mod.	Dat.	Name				Sub.			