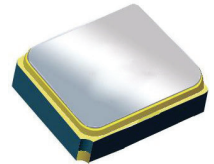


Surface Mount 1575.42MHz SAW Filter



1.4 x 1.1 x 0.7 mm

AFS14A04-1575.42-T3

Moisture Sensitivity Level (MSL) = 3



- **FEATURES:**
 - 1.4 x 1.1 x 0.7 mm low profile SMT package
 - Low Insertion loss
 - Excellent selectivity with high out-of-band rejection

- **APPLICATIONS:**
 - Wireless Communication
 - Remote Control
 - Cellular Phones

➤ **ELECTRICAL SPECIFICATIONS:**

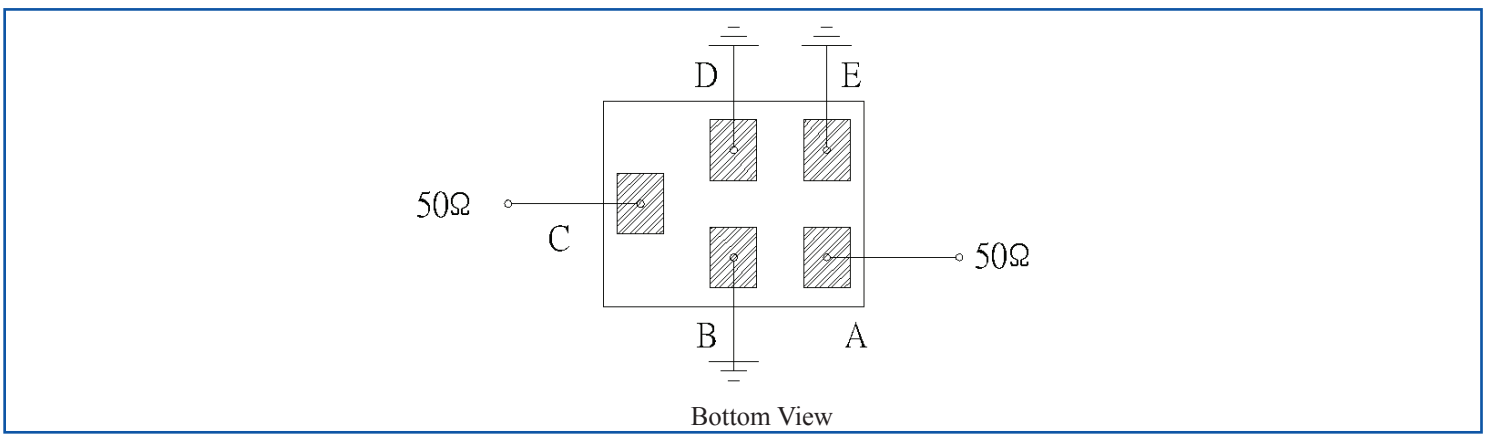
Maximum Ratings

Item	Value
Input Power Level	+15 dBm max.
DC Permissive Voltage	3.0V DC max.
Operating Temperature Range	-40°C to + 85°C
Storage Temperature Range	-40°C to + 85°C

Parameters	Minimum	Typical	Maximum	Units	Notes
Center Frequency (f_c)		1575.42		MHz	
Insertion Loss (IL)		0.90	1.50	dB	(1574.42~1576.42 MHz)
Effective Bandwidth		40		MHz	
Amplitude Ripple		0.1	0.75	dB	(1574.42~1576.42 MHz)
Worst-Case Input / Output Return Loss		23	12.7	dB	(1574.42~1576.42 MHz)
Stop-band Attenuation (Referenced to 0.0 dB)	35	38		dB	D.C~1450 MHz
	30	45			1450~1520 MHz
	45	48			1625~1640 MHz
	38	40			1640~1805 MHz
	38	40			1805~1910 MHz
	38	43			1910~2000 MHz
	30	45			2000~4000 MHz
	20	22			4000~6000 MHz
Source Impedance (Z_S)		50		Ω	See note # 1
Load Impedance (Z_L)		50		Ω	See note # 1

Note #1: No matching network required for operation into 50Ω's

➤ **TEST CIRCUIT:**

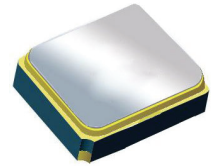


Surface Mount 1575.42MHz SAW Filter

AFS14A04-1575.42-T3

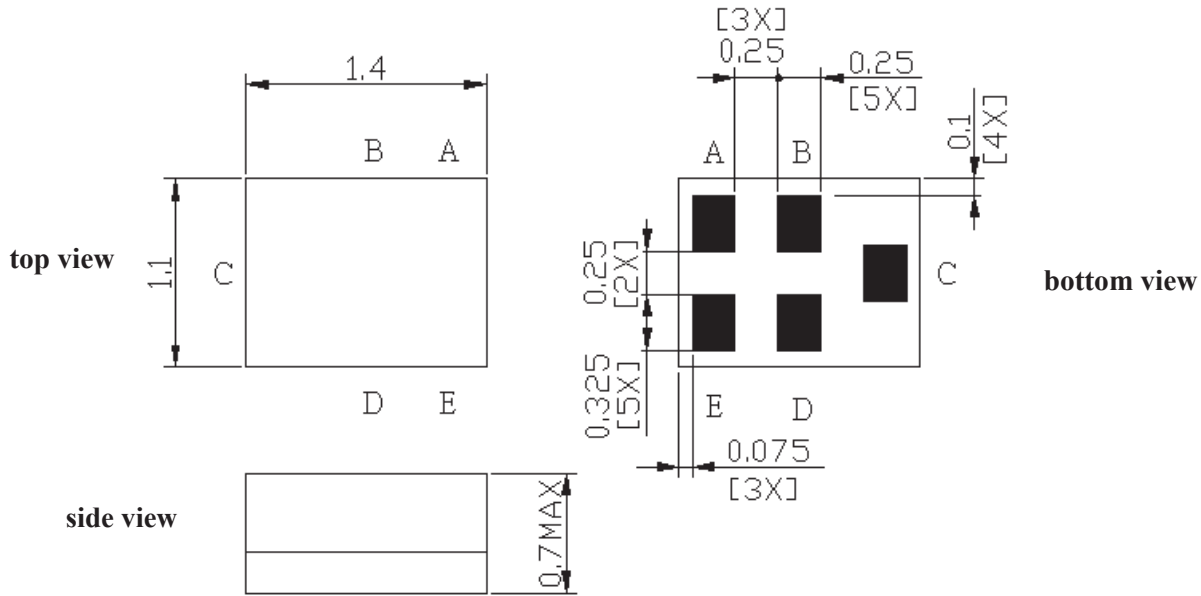


RoHS
Compliant



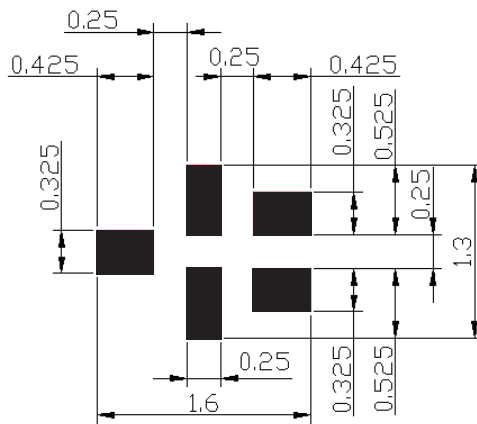
1.4 x 1.1 x 0.7 mm

OUTLINE DIMENSIONS:



C:	Input
A:	Output
B, D, E:	Ground

Recommended Land Pattern:



■ : Land Pattern
Unit : mm

*All Dimensions are in mm

Surface Mount 1575.42MHz SAW Filter

AFS14A04-1575.42-T3



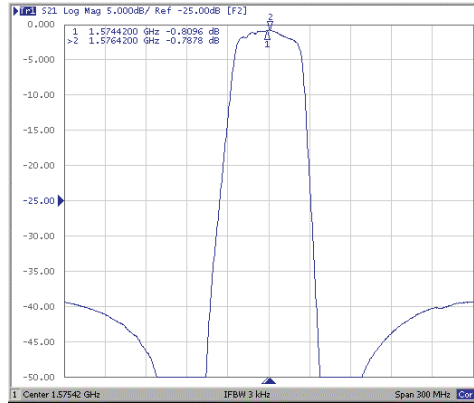
RoHS
Compliant



1.4 x 1.1 x 0.7 mm

FREQUENCY CHARACTERISTICS:

Filter Frequency Response (Narrowband)

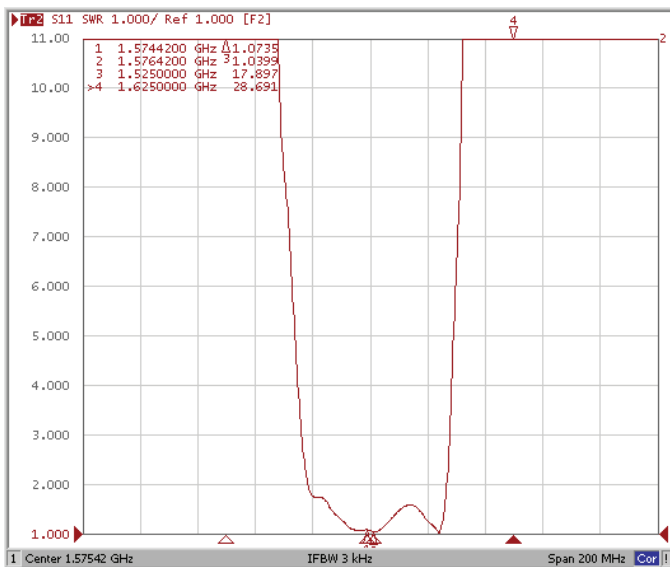


Filter Frequency Response (Wideband)



REFLECTION FUNCTIONS:

S11



S22

