

R6020

REED INSTRUMENTS

Temperature & Humidity USB Data Logger



Instruction
Manual



REED Instruments

1-877-849-2127 | info@reedinstruments.com | www.reedinstruments.com

Table of Contents

Introduction	2
Product Quality.....	3
Safety	3
Features.....	3
Included.....	3
Specifications.....	4
Instrument Description	5
Operating Instructions.....	5-6
<i>Software Installation</i>	5
<i>Battery Installation or Battery Replacement</i>	5
<i>Setting up or Downloading Data</i>	6
LED Status Guide.....	6-8
<i>LED Status Notes</i>	8
FAQ's.....	8
Product Care	9
Product Warranty	9
Product Disposal and Recycling	9
Product Support.....	10

Introduction

Thank you for purchasing your REED R6020 Temperature & Humidity USB Data Logger. Please read the following instructions carefully before using your instrument. By following the steps outlined in this manual your data logger will provide years of reliable service.

Product Quality

This product has been manufactured in an ISO9001 facility and has been calibrated during the manufacturing process to meet stated product specifications. If a certificate of calibration is required please contact the nearest authorized REED distributor or authorized Service Center. Please note an additional fee for this service will apply.

Safety

Never attempt to repair or modify your instrument. Dismantling your product, other than for the purpose of replacing batteries, may cause damage that will not be covered under the manufacturer's warranty. Servicing should only be provided by an authorized service center.

Features

- Stores up to 16,000 temperature and 16,000 humidity readings
- Simply plug into the USB port to begin downloading - no cables or wires required
- User selectable sampling rate from 2 secs to 24 hrs
- Visible alarm (LED) if set max/min values are exceeded
- Wall mount bracket and screws for long-term monitoring

Included

- Wall Mount Bracket and screws
- Protective USB cap
- Software
- Battery

Specifications

Temperature

Measuring Range:	-40 to 158°F (-40 to 70°C)
Accuracy:	±1.8°F (1.0°C)
Resolution:	0.1°F/°C

Humidity

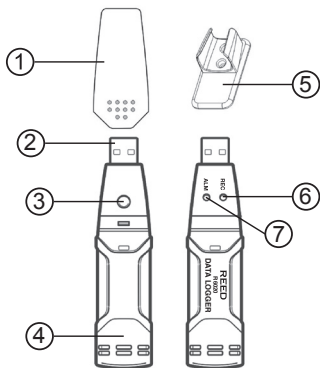
Measuring Range:	0 to 100% RH
Accuracy:	0 to 20% & 80 to 100%: ±5% 20 to 40% & 60 to 80%: ±3.5% 40 to 60%: ±3%
Resolution:	0.1% RH

General Specifications

Datalogging Capabilities:	Yes
Real-Time Clock and Date Stamp:	Yes
Settable Alarms:	Yes (temp. and RH)
Sampling Rate:	Yes (2 secs to 24 hours)
Internal Memory:	32k readings (16,000 temp. and 16,000 humidity)
Power Supply:	3.6V battery
PC Connectivity:	Yes (USB)
Software:	Included
Product Certifications:	CE
Operating Temperature:	-31 to 176°F (-35 to 80°C)
Storage Temperature:	-31 to 176°F (-35 to 80°C)
Operating Humidity Range:	0 to 100%
Dimensions:	4 x 1 x 0.9" (101 x 25 x 23mm)
Weight:	6 oz (172g)

Instrument Description

1. Protective Cover
2. USB Connector
3. Start Button
4. RH & Temperature Sensors
5. Mounting Clip
6. Record LED (Green)
7. Alarm LED (Red/Yellow)



Operating Instructions

Software Installation

Install the included software by placing the supplied program disc in the PC's CD-ROM drive. If the installation program does not automatically start, open and browse the CD-ROM drive from your computer. Double click on the setup file and follow the on-screen prompts to install the software.

If your computer does not have a CD drive please visit www.reedinstruments.com/software to download the latest R6020 software.

Battery Installation or Battery Replacement

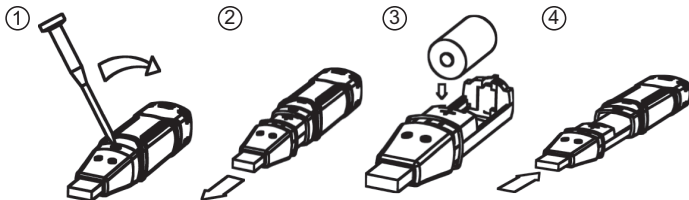
A 3.6V battery is provided with the R6020. Please note that only a 3.6V battery should be used with the instrument. In order to install the battery follow the steps below:

1. Use a small flathead screwdriver to open the casing
2. Slide the casing off to expose the battery
3. Install (or replace) the battery
4. Slide the casing back on the instrument

continued...

REED Instruments

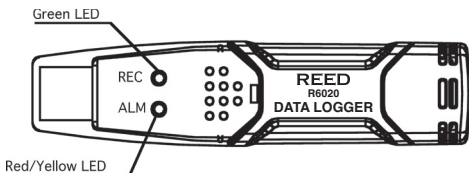
1-877-849-2127 | info@reedinstruments.com | www.reedinstruments.com



Setting up or Downloading Data

1. Once the software and battery have been installed, insert the R6020 in an available USB port on your PC.
2. Double click the software icon on your desktop to load the program.
3. In the bottom left corner of the software window there is a status indicator that should show your R6020 is connected "Connect". If you do not see "Connect" please verify your battery has been correctly installed.
3. Set up the data logger for a new session, or download saved data from a previous recording.
4. When setup is complete or data has been downloaded, the R6020 should be removed from the USB port in order to preserve battery life.
5. Full specifications and Operating System compatibility can be found on the product page at www.reedinstruments.com.
6. If you have specific questions related to your application and/or questions related to software setup and functionality please contact the nearest authorized distributor or Customer Service at info@reedinstruments.com or 1-877-849-2127.





LED Status Guide



continued...

REED Instruments

1-877-849-2127 | info@reedinstruments.com | www.reedinstruments.com

LEDs	Status	Indication	Action
REC ALM 	Both LED lights OFF	Logging not active	Start logging
		Low battery or no battery installed	Install or replace battery
REC ALM 	Single Green flash every 10 seconds*	Logging, no set alarm triggered**	No action required
	Double Green flash every 10 seconds*	Manual start was chosen from setup	Press and hold the start button until the Green and Yellow LEDs flash indicating recording has started
REC ALM 	Single Red flash every 10 seconds*	Logging, Low alarm for relative humidity triggered	No action required
	Double Red flash every 10 seconds*	Logging, High alarm for relative humidity triggered	No action required
	Single Red flash every 60 seconds	Low Battery	Replace Battery, download saved data
REC ALM 	Single Yellow flash every 10 seconds*	Logging, Low alarm for temperature triggered	No action required
	Double Yellow flash every 10 seconds*	Logging, High alarm for temperature triggered	No action required
	Single Yellow flash every 60 seconds*	Memory full	Download data

*To conserve battery power, the LED flashing frequency can be adjusted between 15 and 30 seconds in the software.

**To conserve battery power, the alarm LEDs for temperature and humidity can be disabled via software.

LED Status Notes

- When the battery is low, all recording operations will be disabled automatically. When the recording is disabled the R6020 will still retain logged data. The supplied software is required to restart recording and to download data.
- When both temperature and humidity alarms have been triggered, the LED status will alternate every cycle. For example, if only one alarm has been triggered, the REC LED blinks Green for one cycle (indicating the instrument is logging) and the ALM indicator will blink RED during the next cycle (indicating an alarm has been triggered). If two alarms have been triggered, the REC LED will not blink green at all. The first alarm will blink during the first cycle and the second alarm will blink during the next cycle.

FAQ's

How do I start recording? What's the difference between "Instant" and "Manual" recording options during the software setup process?

By selecting "Manual" for the start mode, you will have to press the start button on the instrument to begin recording. When the "Instant" mode is selected, data logging will automatically start as soon as the instrument is pulled out of the USB port.

How do I stop recording?

Unfortunately there is no way to stop recording in the field. In order to stop recording the R6020 needs to be connected to your PC.

Is the R6020 compatible with my Apple (MAC) computer or tablet?

At this time the R6020 is only compatible with PC computers.

I cannot install my software on my work computer, do you know why?

Please note that you will require administrative rights to install and run the R6020 software. In order to install and run the software you will have to contact your IT department/personnel.

Can I use my R6020 without the software?

In order to setup the instrument and retrieve data the R6020 software is required.

Product Care

To keep your instrument in good working order we recommend the following:

- Store your product in a clean, dry place.
- Change the battery as needed.
- If your instrument isn't being used for a period of one month or longer please remove the battery.

Product Warranty

REED Instruments guarantees this instrument to be free of defects in material or workmanship for a period of one (1) year from date of shipment. During the warranty period, REED Instruments will repair or replace, at no charge, products or parts of a product that proves to be defective because of improper material or workmanship, under normal use and maintenance. REED Instruments total liability is limited to repair or replacement of the product. REED Instruments shall not be liable for damages to goods, property, or persons due to improper use or through attempts to utilize the instrument under conditions which exceed the designed capabilities. In order to begin the warranty service process, please contact us by phone at 1-877-849-2127 or by email at info@reedinstruments.com to discuss the claim and determine the appropriate steps to process the warranty.

Product Disposal and Recycling



Please follow local laws and regulations when disposing or recycling your instrument. Your product contains electronic components and must be disposed of separately from standard waste products.

Product Support

If you have any questions on your product, please contact your authorized REED distributor or REED Instruments Customer Service by phone at 1-877-849-2127 or by email at info@reedinstruments.com.

Please visit www.REEDINSTRUMENTS.com for the most up-to-date manuals, datasheets, product guides and software.

*Product specifications subject to change without notice.
All rights reserved. Any unauthorized copying or reproduction of this manual is strictly prohibited without prior written permission from REED Instruments.*

REED

INSTRUMENTS

TEST & MEASURE WITH CONFIDENCE



CHECK OUT OUR LATEST PRODUCTS!

REED Instruments

1-877-849-2127 | info@reedinstruments.com | www.reedinstruments.com

REED INSTRUMENTS

TEMPERATURE
& HUMIDITY



SOUND



MOISTURE



AIR VELOCITY



ELECTRICAL



REED Instruments

1-877-849-2127 | info@reedinstruments.com | www.reedinstruments.com