

Resistance-Contained Transistor Series

Features

- ☆ On-chip bias resistance
- ☆ Small-sized package (MCP, CP, SPA, NP)
- ☆ Both PNP and NPN types are available.

Applications

- ☆ Switching circuit.
- ☆ Inverter circuit.
- ☆ Interface circuit.
- ☆ Driver circuit.

dc IC=100mA Series (Ta=25°C)
(): Marking on MCP, CP.

For PNP (-) sign is omitted.

| Type No For PNP, (-) sign is omitted. PNP / NPN | Package | Absolute Maximum Ratings | | | | | R1/R2 (KΩ) | Type No For PNP, (-) sign is omitted. PNP / NPN |
|--|---------|--------------------------|---|------------------------|-------------------------|------------------------|--|--|
| | | VCBO VCEO (V) | V _{EBO} (V) | I _C (mA) | i _{cp} (mA) | P _C (mW) | | |
| 2SA1676(BL) / 2SC4396(BY) 2SA1677(CL) / 2SC4397(CY) 2SA1678(EL) / 2SC4398(EY) 2SA1722(HL) / 2SC4498(QY) | MCP | 50 | 10 | 100 | 200 | 150 | 47/47 22/22 10/10 2.2/10 | A1676(BL) / C4396(BY) A1677(CL) / C4397(CY) A1678(EL) / C4398(EY) A1722(HL) / C4498(QY) |
| 2SA1341(BL) / 2SC3395(BY) 2SA1508(JL) / 2SC3898(RY) 2SA1343(DL) / 2SC3397(DY) 2SA1342(CL) / 2SC3396(CY) 2SA1589(WL) / 2SC4120(ET) 2SA1563(RL) / 2SC4047(ZY) 2SA1344(EL) / 2SC3398(EY) 2SA1496(GL) / 2SC3859(PY) 2SA1597(XL) / 2SC4146(FT) 2SA1653(ZL) / 2SC4360(MT) 2SA1655(AS) / 2SC4362(NT) 2SA1510(KL) / 2SC3900(SY) 2SA1502(HL) / 2SC3863(QY) 2SA1581(VL) / 2SC4112(DT) 2SA1571(SL) / 2SC4066(AT) 2SA1573(TL) / 2SC4069(BT) | CP | 50 | 10 5 10 10 5 6 10 5 6 6 5 6 5 5 5 | 100 | 200 | 200 | 47/47 47/- 46/23 22/22 22/- 10/47 10/10 10/- 4.7/47 4.7/10 4.7/4.7 4.7/- 2.2/10 2.2/- - /47 - /22 | A1341(BL) / C3395(BY) A1508(JL) / C3898(RY) A1343(DL) / C3397(DY) A1342(CL) / C3396(CY) A1589(WL) / C4120(ET) A1563(RL) / C4047(ZY) A1344(EL) / C3398(EY) A1496(GL) / C3859(PY) A1597(XL) / C4146(FT) A1653(ZL) / C4360(MT) A1655(AS) / C4362(NT) A1510(KL) / C3900(SY) A1502(HL) / C3863(QY) A1581(VL) / C4112(DT) A1571(SL) / C4066(AT) A1573(TL) / C4069(BT) |
| 2SA1345 / 2SC3399 2SA1509 / 2SC3899 2SA1347 / 2SC3401 2SA1346 / 2SC3400 2SA1590 / 2SC4121 2SA1564 / 2SC4048 2SA1348 / 2SC3402 2SA1497 / 2SC3860 2SA1591 / 2SC4133 2SA1654 / 2SC4361 2SA1656 / 2SC4363 2SA1511 / 2SC3901 2SA1503 / 2SC3864 2SA1582 / 2SC4113 2SA1572 / 2SC4067 2SA1574 / 2SC4070 | SPA | 50 | 10 5 10 10 5 6 6 6 5 6 5 5 5 | 100 | 200 | 300 | 47/47 47/- 46/23 22/22 22/- 10/47 10/10 10/- 4.7/47 4.7/10 4.7/4.7 4.7/- 2.2/10 2.2/- - /47 - /22 | A1345 / C3399 A1509 / C3899 A1347 / C3401 A1346 / C3400 A1590 / C4121 A1564 / C4048 A1348 / C3402 A1497 / C3860 A1591 / C4133 A1654 / C4361 A1656 / C4363 A1511 / C3901 A1503 / C3864 A1582 / C4113 A1572 / C4067 A1574 / C4070 |
| 2SA1420 / 2SC3653 2SA1421 / 2SC3654 2SA1422 / 2SC3655 2SA1423 / 2SC3656 | NP | 50 | 10 | 100 | 200 | 400 | 47/47 22/22 46/23 10/10 | A1420 / C3653 A1421 / C3654 A1422 / C3655 A1423 / C3656 |

Case Outlines

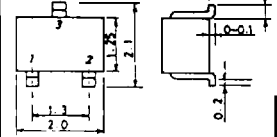
(unit:mm)

SANYO:MCP

1:Base

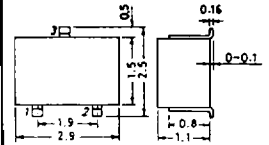
2:Emitter

3:Collector



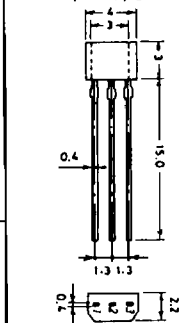
SANYO:CP

1:B, 2:E, 3:C



SANYO:SPA

1:E, 2:C, 3:B

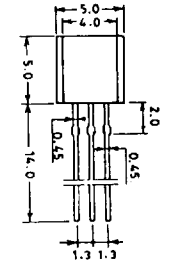


dc IC=500mA Series (Ta=25°C)

| | | | | | | | | |
|--|-----|----|-------------------|-----|-----|-----|---------------------------------------|--|
| 2SA1518(LL) / 2SC3912(TY) 2SA1519(ML) / 2SC3913(UY) 2SA1520(NL) / 2SC3914(VY) 2SA1521(OL) / 2SC3915(WY) | CP | 50 | 10 6 6 6 | 500 | 800 | 200 | 10/10 4.7/4.7 2.2/10 2.2/2.2 | A1518(LL) / C3912(TY) A1519(ML) / C3913(UY) A1520(NL) / C3914(VY) A1521(OL) / C3915(WY) |
| 2SA1522 / 2SC3916 2SA1523 / 2SC3917 2SA1524 / 2SC3918 2SA1525 / 2SC3919 | SPA | 50 | 10 6 6 6 | 500 | 800 | 300 | 10/10 4.7/4.7 2.2/10 2.2/2.2 | A1522 / C3916 A1523 / C3917 A1524 / C3918 A1525 / C3919 |
| 2SA1526 / 2SC3920 2SA1527 / 2SC3921 2SA1528 / 2SC3922 2SA1529 / 2SC3923 | NP | 50 | 10 6 6 6 | 500 | 800 | 600 | 10/10 4.7/4.7 2.2/10 2.2/2.2 | A1526 / C3920 A1527 / C3921 A1528 / C3922 A1529 / C3923 |

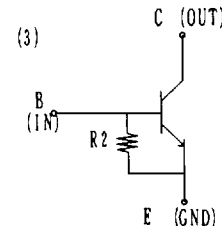
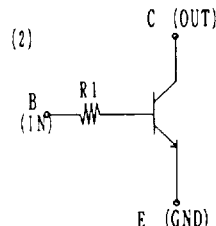
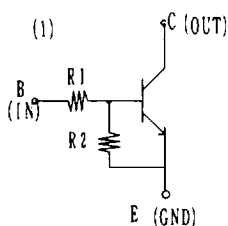
SANYO:NP

1:E, 2:C, 3:B



In addition to the above we have products of CP5/6 outlines. see the quick guides.

* Electrical connection(NPN)



These specifications are subject to change without notice.