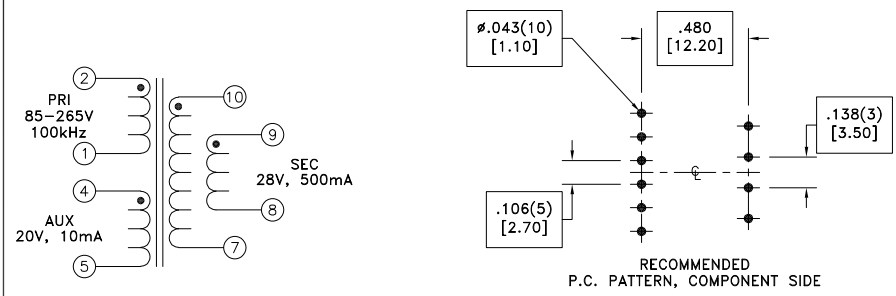
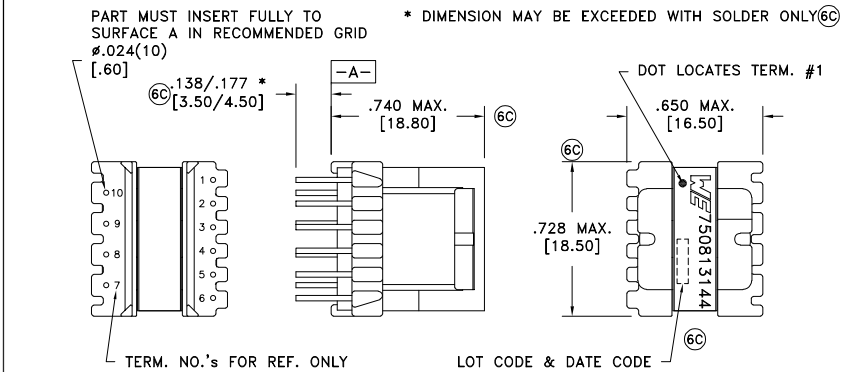


CUSTOMER TERMINAL	RoHS	LEAD(Pb)-FREE
Sn96%, Ag4%	Yes	Yes



ELECTRICAL SPECIFICATIONS @ 25°C unless otherwise noted:

PARAMETER	TEST CONDITIONS	VALUE
D.C. RESISTANCE	1-2 @20°C	2.40 ohms $\pm 10\%$
D.C. RESISTANCE	4-5 @20°C	1.55 ohms $\pm 10\%$
D.C. RESISTANCE	8-9 @20°C	0.420 ohms $\pm 10\%$
D.C. RESISTANCE	7-10 @20°C	0.570 ohms $\pm 10\%$
INDUCTANCE	1-2 10kHz, 100mVAC, Ls	600uH $\pm 10\%$
SATURATION CURRENT	20% rolloff from initial	1.75A
LEAKAGE INDUCTANCE	1-2 tie(4+5, 7+8+9+10), 100kHz, 100mVAC, Ls	15uH typ., 25uH max.
DIELECTRIC	2-10 tie(1+4, 7+9), 4500VAC, 1 second	4500VAC, 1 minute
DIELECTRIC	2-4 1250VAC, 1 second	1000VAC, 1 minute
URNS RATIO	(2-1):(10-7)	4:1, $\pm 1\%$
URNS RATIO	(2-1):(9-8)	4:1, $\pm 1\%$
URNS RATIO	(2-1):(4-5)	5.6:1, $\pm 1\%$

GENERAL SPECIFICATIONS:

OPERATING TEMPERATURE RANGE: -40°C to +125°C including temp rise.

Designed to comply with the following requirements as defined by IEC61558-2-17:
 - Reinforced insulation for a primary circuit at a working voltage of 400VDC.

Wire insulation & RoHS status not affected by wire color.
 Wire insulation color may vary depending on availability.

REV.	DATE	Packaging Specifications		Tolerances unless otherwise specified: Angles: $\pm 1^\circ$ Fractions: $\pm 1/64$ Decimals: $\pm .005$ [.13] Footprint: $\pm .001$ [.03]	DRAWING TITLE	PART NO.	
6D	10/22	Method: Tray			TRANSFORMER	750813144	
6C	2/21	PKG-1244			This drawing is dual dimensioned. Dimensions in brackets are in millimeters.	eiSos p/n: 750813144	
6B	3/11	www.we-online.com/midcom					SPECIFICATION SHEET 1 OF 1
6A	1/11	SEE REVISION SHEET FOR REVISION LEVEL					