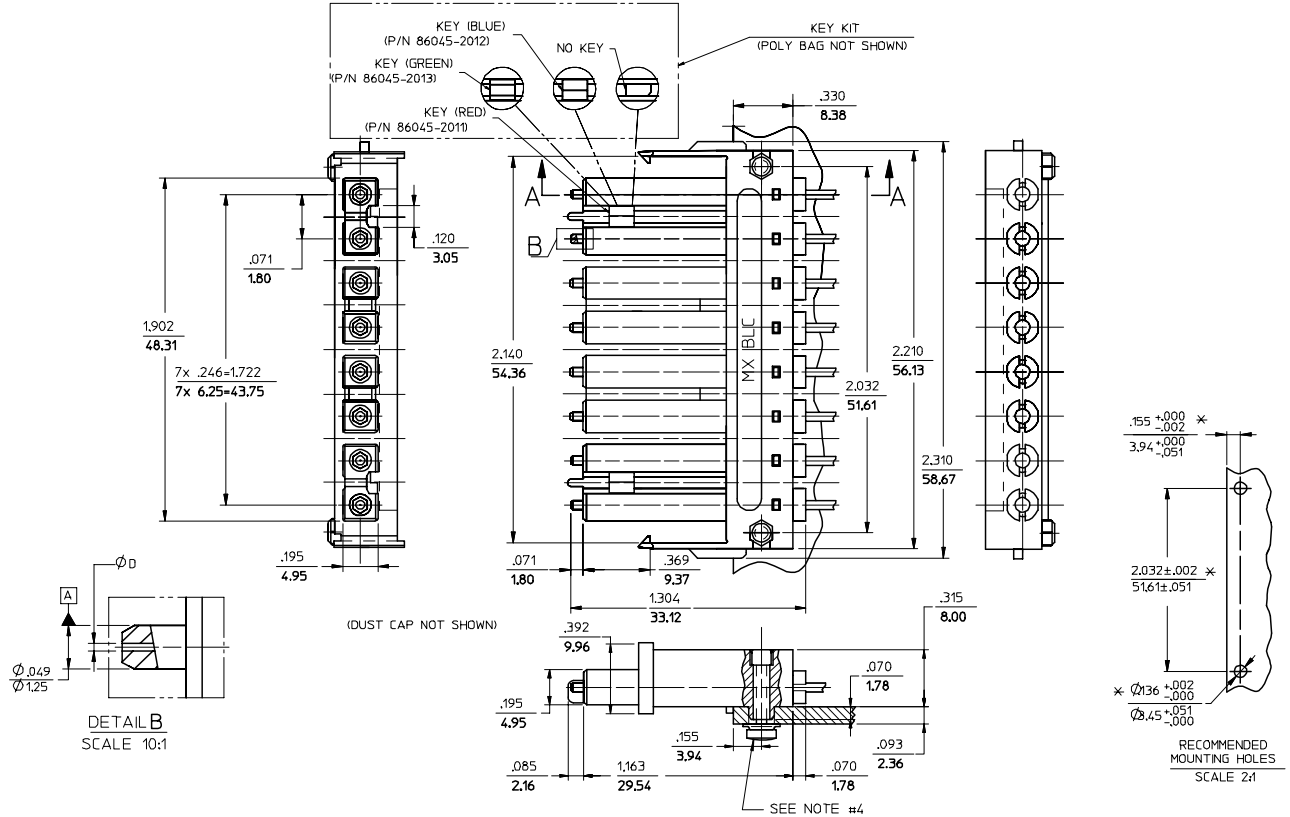


CONNECTOR P/N	ØD (H43)	CABLE TYPE
106046-2200	125.50	SINGLE MODE
106046-3000	127.00	MULTIMODE
106046-4200	125.00	SINGLE MODE
106046-5000	126.00	
106046-6200	125.25	



NOTES:

- ALL DIMENSIONS ARE FOR REFERENCE ONLY, EXCEPT WHEN MARKED WITH (\*).
- KEYS ARE TO BE PACKAGED UNASSEMBLED WITH CONNECTOR IN POLY BAG.
- RECOMMENDED TORQUE TO ASSEMBLE THIS SCREW-21bf-in./- 10%

ENTER DESCRIPTION EC NO: MF2007-0349 DRAWN/REV: ZNER 2006/11/28 CHKD: 2006/11/28 APPR: I GUMIN 2006/12/04 REV: A1	QUALITY SYMBOLS ▽=0 ▽=0	GENERAL TOLERANCES (UNLESS SPECIFIED)		DIMENSION STYLE		SCALE	DESIGN UNITS	THIRD ANGLE PROJECTION			
				IN/MM		4:1	INCH				
				mm	INCH	DRAWN BY DATE		TITLE			
				4 PLACES ± --- ± ---	3 PLACES ± --- ± ---	2 PLACES ± --- ± ---	1 PLACE ± --- ± ---	PGIBLIN 2005/10/20		BLC CONN.125.5,HGH.PREC, (8 POSITION)	
		ANGULAR ±1/2°		APPROVED BY DATE		MOLEX INCORPORATED					
		DRAFT WHERE APPLICABLE MUST REMAIN WITHIN DIMENSIONS		MATERIAL NO.		DOCUMENT NO.		SHEET NO.			
				SEE TABLE		SD-106046-XXX0		1 OF 01			
				SIZE C		THIS DRAWING CONTAINS INFORMATION THAT IS PROPRIETARY TO MOLEX INCORPORATED AND SHOULD NOT BE USED WITHOUT WRITTEN PERMISSION					