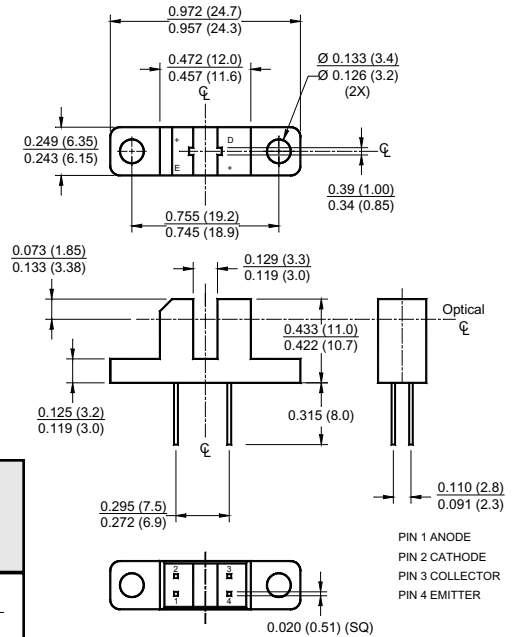
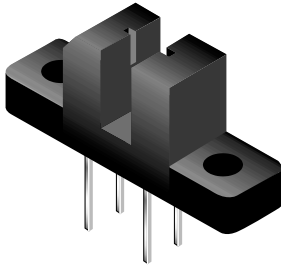


Transmissive Opto Sensors

Slotted Switch H21 (Analog – Standard Resolution)



Part Number	Test Conditions		I_C (ON) (mA) min	BV_{CEO} (V) min	Output	Aperture Width (mm)		Gap Width (mm)
	I_F (mA)	V_{CE} (V)				Emitter	Sensor	
CNY28	20	10	0.2	30	Phototransistor	0.94	0.94	3.15
CNY29	20	10	2.50	25	Photodarlington	0.94	0.94	3.15
H21A1	20	5	1.00	30	Phototransistor	0.94	0.94	3.15
H21A2	20	5	2.00	30	Phototransistor	0.94	0.94	3.15
H21A3	20	5	4.00	30	Phototransistor	0.94	0.94	3.15
H21A4	20	5	1.00	55	Phototransistor	0.94	0.94	3.15
H21A5	20	5	2.00	55	Phototransistor	0.94	0.94	3.15
H21A6	20	5	4.00	55	Phototransistor	0.94	0.94	3.15
H21B1	10	1.5	7.50	30	Photodarlington	0.94	0.94	3.15
H21B2	10	1.5	14.00	30	Photodarlington	0.94	0.94	3.15
H21B3	10	1.5	25.00	30	Photodarlington	0.94	0.94	3.15
H21B4	10	1.5	7.50	55	Photodarlington	0.94	0.94	3.15
H21B5	10	1.5	14.00	55	Photodarlington	0.94	0.94	3.15
H21B6	10	1.5	25.00	55	Photodarlington	0.94	0.94	3.15

All dimensions are in inches (millimeters)

PARAMETER	CNY28	CNY29	H21A1-A3	H21A4-A6	H21B1-B3	H21B4-B6
	Temperature					
T_{OPR}	-55 to +85°C	-55 to +85°C	-55 to +100°C	-55 to +100°C	-55 to +100°C	-55 to +100°C
T_{STG}	-55 to +85°C	-55 to +85°C	-55 to +100°C	-55 to +100°C	-55 to +100°C	-55 to +100°C
T_{SOL-H}	240°C for 5 sec for all devices					
T_{SOL-F}	260°C for 10 sec for all devices					
Input Diode						
I_F	60 mA	60 mA	60 mA	60 mA	60 mA	60 mA
V_R	3.0 V	3.0 V	6.0 V	6.0 V	6.0 V	6.0 V
P_D	100 mW	100 mW	100 mW	100 mW	100 mW	100 mW
Output Transistor						
V_{CEO}	30 V	30 V	30 V	55 V	30 V	55 V
V_{ECO}	4.5 V	6.0 V	4.5 V	4.5 V	6.0 V	6.0 V
I_C	20 mA	40 mA	20 mA	20 mA	40 mA	40 mA
P_D	150 mW	150 mW	150 mW	150 mW	150 mW	150 mW

Absolute Maximum Ratings