

Han 3A female insert with Quick-Lock

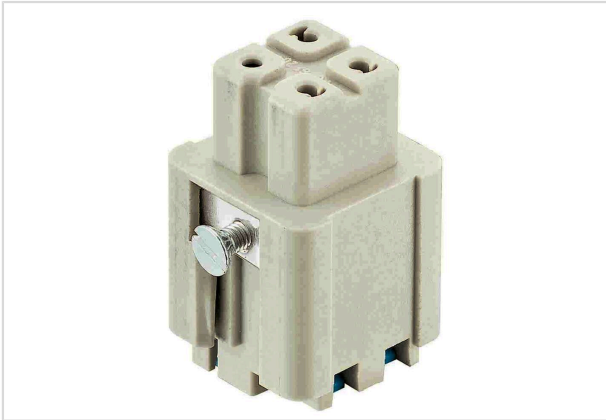


Image is for illustration purposes only. Please refer to product description.

Part number	09 20 003 2733
Specification	Han 3A female insert with Quick-Lock
HARTING eCatalogue	https://b2b.harting.com/09200032733

Identification

Category	Inserts
Series	Han A [®]

Version

Termination method	Han-Quick Lock [®] termination
Gender	Female
Size	3 A
Number of contacts	3
PE contact	Yes
Details	Blue slide
Details	for stranded wire according to IEC 60228 Class 5

Technical characteristics

Conductor cross-section	0.5 ... 2.5 mm ²
Rated current	10 A
Rated voltage conductor-earth	230 V
Rated voltage conductor-conductor	400 V
Rated impulse voltage	4 kV
Pollution degree	3
Rated voltage acc. to UL	600 V
Insulation resistance	>10 ¹⁰ Ω
Limiting temperature	-40 ... +125 °C



Pushing Performance
Since 1945

Technical characteristics

Mating cycles	≥500
---------------	------

Material properties

Material (insert)	Polycarbonate (PC)
Colour (insert)	RAL 7032 (pebble grey)
Material (contacts)	Copper alloy
Surface (contacts)	Silver plated
Material flammability class acc. to UL 94	V-0
RoHS	compliant with exemption
RoHS exemptions	6(c): Copper alloy containing up to 4 % lead by weight
ELV status	compliant with exemption
China RoHS	50
REACH Annex XVII substances	Not contained
REACH ANNEX XIV substances	Not contained
REACH SVHC substances	Yes
REACH SVHC substances	Lead
ECHA SCIP number	564b7d75-7bf6-4cfb-acb1-2168eb61b675
California Proposition 65 substances	Yes
California Proposition 65 substances	Lead Nickel Naphthalene
Fire protection on railway vehicles	EN 45545-2 (2020-08)
Requirement set with Hazard Levels	R26

Specifications and approvals

Specifications	IEC 60664-1 IEC 61984
Approvals	DNV GL
UL / CSA	UL 1977 ECBT2.E235076 CSA-C22.2 No. 182.3 ECBT8.E235076

Commercial data

Packaging size	10
Net weight	14.04 g
Country of origin	Romania



Pushing Performance
Since 1945

Commercial data

European customs tariff number	85366990
GTIN	5713140038868
eCl@ss	27440205 Contact insert for industrial connectors
