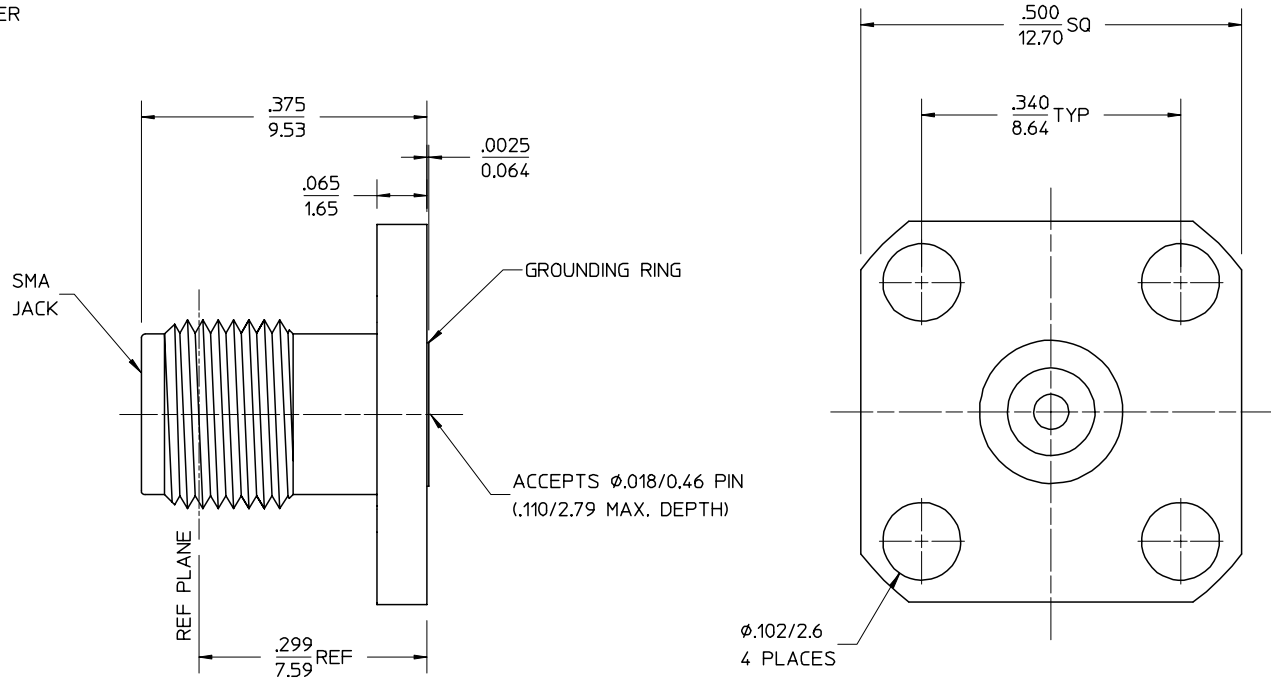


MATERIALS AND FINISHES:
 BODY STAINLESS STEEL
 PASSIVATED

CENTER CONTACT BERYLLIUM COPPER
 PLATED GOLD

INSULATOR TEFLON



PART # 73251-0800

MIL-STD-348, FIGURE 310-2	INTERFACE
PS-89675-2910	ELECTRO/MECH PERFORMANCE
SPECIFICATION	DESCRIPTION

CNG: NEW RELEASE	EC NO. URF-0233	DESCRIPTION	UNLESS OTHERWISE SPECIFIED DIMS ARE INCHES AND ANGLES ARE DEGREES. 1. ✓ 63 ALL OVER. 2. NO CHATTER OR NON-UNIFORM SURFACE FINISH ALLOWED. 3. PARTS TO BE FREE OF BURRS & SHARP EDGES .005 MAX BREAK, & EXTERNAL THREADS TO BE ROLLED OR SINGLE POINT. 4. EXTERNAL THREADS TO BE ROLLED OR SINGLE POINT. 5. DIAMETERS TO BE CONCENTRIC WITHIN .003 TIR.
	DRWN: TEF 06/21/99		
A	CHK: DHG 06/21/99	REV	
	APPR: GMH 06/21/99		

QUALITY SYMBOLS	GENERAL TOLERANCES: (UNLESS SPECIFIED)	SCALE	DESIGN UNITS	THIRD ANGLE PROJECTION	DIMENSIONS:
MAJOR	mm INCH	—	<input type="checkbox"/> mm <input checked="" type="checkbox"/> INCH	<input type="checkbox"/> mm <input checked="" type="checkbox"/> INCH	<input type="checkbox"/> mm ONLY
CRITICAL	4 PLACES ± .0005	DRAWN BY & DATE	TITLE:		
	3 PLACES ± .005	EDC 02/19/99	SMA JACK, RECEPTACLE, 4 HOLE		
	2 PLACES ± .01	CHECKED BY & DATE	FLANGE MOUNT, ACCEPTS .018 DIA PIN		
	1 PLACE ± .1	DHG 02/19/99	SMA-JR/F		
	ANGULAR: ±2°	APPROVED BY & DATE	MOLEX MOLEX INCORPORATED		
		GMH 02/19/99	CAD FILENAME	MATERIAL NO.	DRAWING NO.
				SEE NOTE	SD-73251-080
			THIS DRAWING CONTAINS INFORMATION THAT IS PROPRIETARY TO MOLEX INCORPORATED AND SHOULD NOT BE USED WITHOUT WRITTEN PERMISSION.		SHEET NO. 1 of 1
					SIZE B