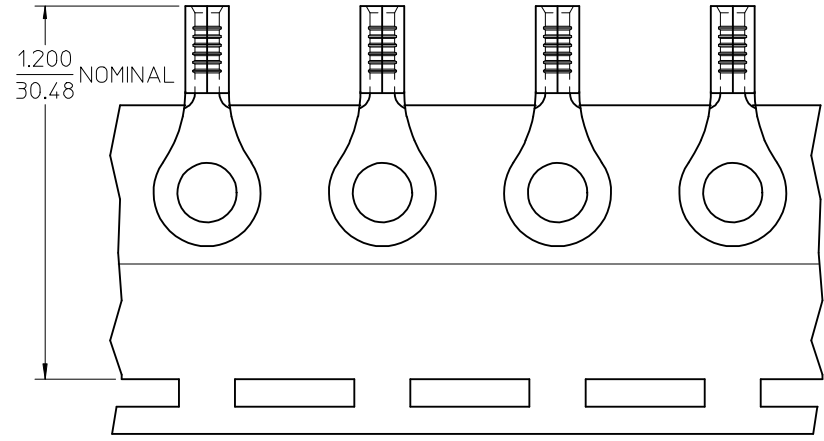
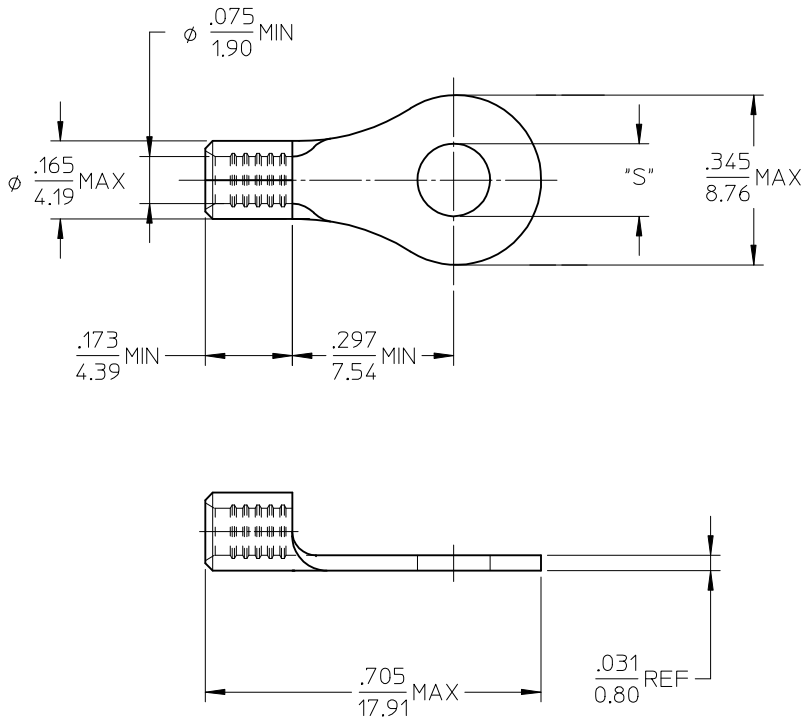


MATERIAL NO.	ENG. NO.	STUD SIZE	"S" MAX	DESCRIPTION
192030488	B-S-137-06	6	.149/3.78	LOOSE
192030048	B-S-137-06T	6	.149/3.78	TAPE



PARTS ON TAPE

- NOTE(S):
1. MATERIAL: STEEL
 2. WIRE SIZE: 16-14 AWG (1.5-2.5 MM²)
 3. FINISH: NICKEL PLATING
 4. PART IS ROHS COMPLIANT.
 5. AMBIENT OPERATING TEMPERATURE UP TO 900 °F (483 °C).

ADDED OPERATING TEMP EC NO: ETC2007-0297 DRW:EHILE 2007/03/13 CHKD:JMACNEIL 2007/03/13 APPR:JMACNEIL 2007/03/14	DESCRIPTION REV	QUALITY SYMBOLS	GENERAL TOLERANCES (UNLESS SPECIFIED)	DIMENSION STYLE	SCALE	DESIGN UNITS	THIRD ANGLE PROJECTION																										
		$\nabla=0$ $\nabla=0$	<table border="1"> <thead> <tr> <th></th> <th>mm</th> <th>INCH</th> </tr> </thead> <tbody> <tr> <td>4 PLACES</td> <td>±---</td> <td>±---</td> </tr> <tr> <td>3 PLACES</td> <td>±---</td> <td>±---</td> </tr> <tr> <td>2 PLACES</td> <td>±---</td> <td>±---</td> </tr> <tr> <td>1 PLACE</td> <td>±---</td> <td>±---</td> </tr> <tr> <td colspan="3">ANGULAR ±---°</td> </tr> </tbody> </table>		mm	INCH	4 PLACES	±---	±---	3 PLACES	±---	±---	2 PLACES	±---	±---	1 PLACE	±---	±---	ANGULAR ±---°			<table border="1"> <thead> <tr> <th>IN/MM</th> <th>DATE</th> </tr> </thead> <tbody> <tr> <td>DRAWN BY EHILE</td> <td>2006/09/20</td> </tr> <tr> <td>CHECKED BY JMACNEIL</td> <td>2006/09/20</td> </tr> <tr> <td>APPROVED BY JMACNEIL</td> <td>2006/09/20</td> </tr> </tbody> </table>	IN/MM	DATE	DRAWN BY EHILE	2006/09/20	CHECKED BY JMACNEIL	2006/09/20	APPROVED BY JMACNEIL	2006/09/20	4:1	INCH	
			mm	INCH																													
		4 PLACES	±---	±---																													
3 PLACES	±---	±---																															
2 PLACES	±---	±---																															
1 PLACE	±---	±---																															
ANGULAR ±---°																																	
IN/MM	DATE																																
DRAWN BY EHILE	2006/09/20																																
CHECKED BY JMACNEIL	2006/09/20																																
APPROVED BY JMACNEIL	2006/09/20																																
DRAFT WHERE APPLICABLE MUST REMAIN WITHIN DIMENSIONS			MATERIAL NO. SEE CHART	DOCUMENT NO. SD-19203-029	TITLE RING TONGUE TERMINAL, 16-14 AWG, KRIMPTITE, 900 DEG F (483 DEG C)		SHEET NO. 1 OF 1																										
			SIZE B	THIS DRAWING CONTAINS INFORMATION THAT IS PROPRIETARY TO MOLEX INCORPORATED AND SHOULD NOT BE USED WITHOUT WRITTEN PERMISSION																													