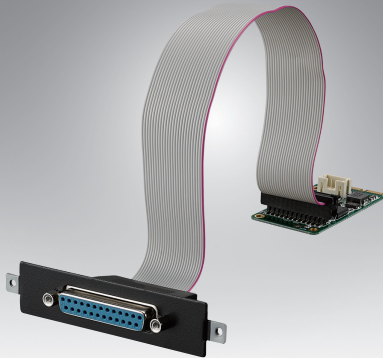


# MOS-2220-X1101E

## Parallel Printer Port iDoor Module

NEW



RoHS COMPLIANT  
CE FCC

### Features

- USB to 1x Parallel port module
- Full size Mini PCIe & Module type combo
- MiniPCIe thru USB & USB Pin Header
- Support IEEE 1284-compliant ECP

### Specifications

Technology	Parallel type
Host site Interface	Combo USB (Internal/ External) Interface
Parallel Connector	2.0 mm, 2x13-pins, Male type Wafer Box
Support Voltage and Current	+ 5.0 V, 100 mA
LED Status	Module Ready: Red LED
OS Supported	Windows 2000/ XP/ Vista/ 7/ 8 / 10, Linux by project support
Temperature Ranges	Operation: 0 to +70° C Storage: -40 to +85° C
Dimensions (L x W x H)	50.59 x 30 x 10 mm

### Ordering Information

Part No.	Product Description
MOS-2220-X1101E	Parallel Printer module, 1-Ch, USB I/F (0 to +70° C) with cable and iDoor bracket