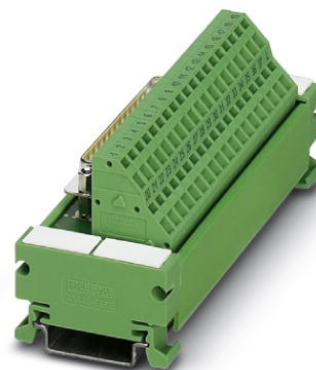


# UM 45-D25SUB/S/ZFKDS

Order No.: 2293637

The illustration shows version UM 45-D 37SUB/S/ZFKDS




<http://eshop.phoenixcontact.de/phoenix/treeViewClick.do?UID=2293637>

VARIOFACE module, with spring-cage connection and D-Subminiature pin strip, for mounting on NS 35/7.5, 25-pos.



## Commercial data

|                          |  |
|--------------------------|--|
| GTIN (EAN)               | <br>4 017918 120535 |
| sales group              | I011   |
| Pack                     | 1 pcs.   |
| Customs tariff           | 85369010   |
| Catalog page information | Page 286 (IF-2009)   |

## Product notes

WEEE/RoHS-compliant since:  
08/11/2006



<http://www.download.phoenixcontact.com>  
Please note that the data given here has been taken from the online catalog. For comprehensive information and data, please refer to the user documentation. The General Terms and Conditions of Use apply to Internet downloads.

## Technical data

### General data

|   |  |
|---|--|
| Nominal voltage $U_N$                     | 125 V AC/DC                            |
| Max. current carrying capacity per branch | 2.5 A                                  |
|   | 1.5 A (with even load on all branches) |
| Number of positions                       | 25                                     |

|   |                       |
|---|-----------------------|
| Width                                   | 90 mm                 |
| Height                                  | 45 mm                 |
| Depth                                   | 50 mm                 |
| Status display                          | No                    |
| Ambient temperature (operation)         | -20 °C ... 50 °C      |
| Ambient temperature (storage/transport) | -20 °C ... 70 °C      |
| Test voltage                            | 800 V (50 Hz, 1 min.) |
| Mounting position                       | Any                   |
| Standards/regulations                   | IEC 60664             |
|   | DIN EN 50178          |
|   | IEC 62103             |
| Pollution degree                        | 2                     |
| Surge voltage category                  | II                    |

#### Connection data

|  |                        |
|--|------------------------|
| Connection 1                           | PCB connection         |
| Connection in acc. with standard       | IEC / EN               |
| Type of connection                     | Spring-cage connection |
| Conductor cross section solid min.     | 0.2 mm <sup>2</sup>    |
| Conductor cross section solid max.     | 2.5 mm <sup>2</sup>    |
| Conductor cross section stranded min.  | 0.2 mm <sup>2</sup>    |
| Conductor cross section stranded max.  | 1.5 mm <sup>2</sup>    |
| Conductor cross section AWG/kcmil min. | 24                     |
| Conductor cross section AWG/kcmil max  | 14                     |
| Stripping length                       | 8 mm                   |
| Connection 2                           | D-SUB connection       |
| Type of connection                     | Pluggable              |
| Number of positions                    | 25                     |

#### Certificates / Approvals



Certification

GOST

| Accessories            |                                |  |
|------------------------|--------------------------------|--|
| Item                   | Designation                    | Description  |
| <b>Cable/conductor</b> |                                |  |
| 2302421                | CABLE D-SUB-B-B-S/.../.../...  | Shielded round cable, assembled with two D-SUB female connectors, variable cable length  |
| 2302340                | CABLE D-SUB-S/.../.../...      | Shielded round cable, assembled with one D-SUB male and one female connector, variable cable length  |
| 2926153                | CABLE-D-25SUB/F/OE/0,25/S/0,5M | Shielded cable with a 25-pos. D-SUB female connector and one open end. The individual wires are labeled 1 to 25 and fitted with ferrules. The braided shield is routed to a separate cable end. Cable length: 0.5 m. |
| 2926166                | CABLE-D-25SUB/F/OE/0,25/S/1,0M | Shielded cable with a 25-pos. D-SUB female connector and one open end. The individual wires are labeled 1 to 25 and fitted with ferrules. The braided shield is routed to a separate cable end. Cable length: 1 m.   |
| 2926179                | CABLE-D-25SUB/F/OE/0,25/S/1,5M | Shielded cable with a 25-pos. D-SUB female connector and one open end. The individual wires are labeled 1 to 25 and fitted with ferrules. The braided shield is routed to a separate cable end. Cable length: 1.5 m. |
| 2926182                | CABLE-D-25SUB/F/OE/0,25/S/2,0M | Shielded cable with a 25-pos. D-SUB female connector and one open end. The individual wires are labeled 1 to 25 and fitted with ferrules. The braided shield is routed to a separate cable end. Cable length: 2 m.   |
| 2926195                | CABLE-D-25SUB/F/OE/0,25/S/3,0M | Shielded cable with a 25-pos. D-SUB female connector and one open end. The individual wires are labeled 1 to 25 and fitted with ferrules. The braided shield is routed to a separate cable end. Cable length: 3 m.   |
| 2926205                | CABLE-D-25SUB/F/OE/0,25/S/4,0M | Shielded cable with a 25-pos. D-SUB female connector and one open end. The individual wires are labeled 1 to 25 and fitted with ferrules. The braided shield is routed to a separate cable end. Cable length: 4 m.   |
| 2926218                | CABLE-D-25SUB/F/OE/0,25/S/6,0M | Shielded cable with a 25-pos. D-SUB female connector and one open end. The individual wires are labeled 1 to 25 and fitted with ferrules. The braided shield is routed to a separate cable end. Cable length: 6 m.   |
| 2302120                | CABLE-D25SUB/B/S/ 50/ KONFEK/S | Round shielded cable set, with 25-pos. D-SUB female and male connectors, cable length: 0.5 m   |
| 2302133                | CABLE-D25SUB/B/S/100/ KONFEK/S | Round shielded cable set, with 25-pos. D-SUB female and male connectors, cable length: 1 m   |
| 2302146                | CABLE-D25SUB/B/S/150/ KONFEK/S | Round shielded cable set, with 25-pos. D-SUB female and male connectors, cable length: 1.5 m   |
| 2302159                | CABLE-D25SUB/B/S/200/ KONFEK/S | Round shielded cable set, with 25-pos. D-SUB female and male connectors, cable length: 2 m   |
| 2302162                | CABLE-D25SUB/B/S/300/ KONFEK/S | Round shielded cable set, with 25-pos. D-SUB female and male connectors, cable length: 3 m   |

|         |                                   |  |
|---------|-----------------------------------|--|
| 2302175 | CABLE-D25SUB/B/S/400/<br>KONFEK/S | Round shielded cable set, with 25-pos. D-SUB female and male connectors, cable length: 4 m |
| 2302188 | CABLE-D25SUB/B/S/600/<br>KONFEK/S | Round shielded cable set, with 25-pos. D-SUB female and male connectors, cable length: 6 m |

**General**

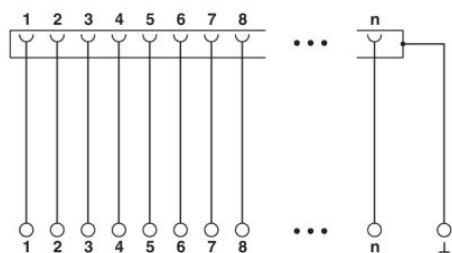
|         |                               |   |
|---------|-------------------------------|---|
| 2900906 | CABLE-D-25SUB-F-OE-0,25-S/... | Shielded cable with a 25-pos. D-SUB female connector and one open end. The individual wires are labeled 1 to 25 and fitted with ferrules. The braided shield is routed to a separate cable end. Cable length: variable. |
|---------|-------------------------------|---|

**Tools**

|         |               |  |
|---------|---------------|--|
| 1204504 | SZF 0-0,4X2,5 | Actuation tool, for ST terminal blocks, also suitable for use as a bladed screwdriver, size: 0.4 x 2.5 x 75 mm, 2-component grip, with non-slip grip |
|---------|---------------|--|

**Diagrams/Drawings**

Circuit diagram



**Address**

PHOENIX CONTACT Deutschland GmbH  
Flachmarktstr. 8  
32825 Blomberg, Germany  
Phone +49 5235 3 12000  
Fax +49 5235 3 41200  
<http://www.phoenixcontact.de>



© 2011 Phoenix Contact  
Technical modifications reserved;