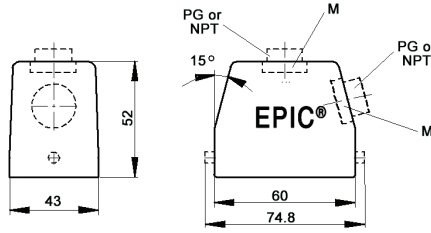
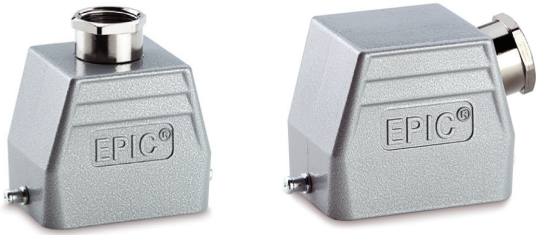


EPIC® HB 6 standard hood

Single-entry hood with single lever bolts



all dimensions are in mm

Technical data

IP Protection class: UL 50E Type 4, 12 IP65

Complete the installation

HB dust covers page 429

Approvals

UL US RoHS VDE

PG

PG hood		SKINTOP® gland	
size	part number	plastic	metal
Top entry			
PG 13	100110R	53015030	52015700
PG 16	100210	53015040	52015740
Side entry			
PG 13	100120	53015030	52015740
PG 16	100220	53015040	52015740

PG hood provided with EPIC® SM/SP gland

NPT

NPT hood		SKINTOP® gland	
size	part number	plastic	metal
Top entry			
½"	100110NP	S1112	53112024
½"	100210NP*	S1112	53112024
Side entry			
½"	100120NP	S1112	53112024
½"	100220NP*	S1112	53112024

NPT hood provided with NPT fitting

* Internal entry is wider for ease of assembly

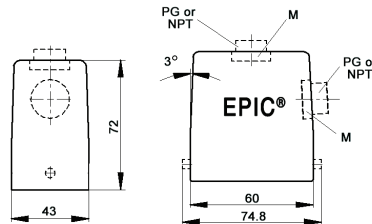
metric

Metric hood		SKINTOP® gland	
size	part number	plastic	metal
Top entry			
M20	19011000	53111020	53112020
M25	19021000	53111030	53112030
Side entry			
M20	19012000	53111030	53112030
M25	19022000	53111030	53112030

* Metric top-entry hoods do not come with a neck

EPIC® HB 6 high profile hood

Single-entry hood with single lever bolts



all dimensions are in mm

Technical data

IP Protection class: UL 50E Type 4, 12 IP65

Complete the installation

HB dust covers page 429

Approvals

UL US RoHS VDE

PG

PG hood		SKINTOP® gland	
size	part number	plastic	metal
Top entry			
PG 21	700202	53015050	52015750
PG 29	700204R	53015060	52015760
Side entry			
PG 21	700222	53015050	52015750
PG 29	700224R	53015060	52015760

PG hood provided with EPIC® SM/SP gland

NPT

NPT hood		SKINTOP® gland	
size	part number	plastic	metal
Top entry			
¾"	700202NP	S1134	53112034
1"	700204NP	S1101	53112044
Side entry			
¾"	700222NP	S1134	53112034
1"	700224NP	S1101	53112044

NPT hood provided with NPT fitting

metric

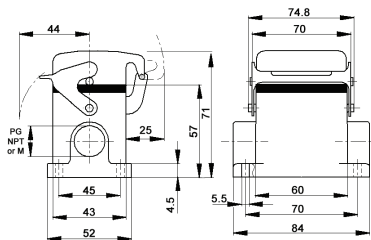
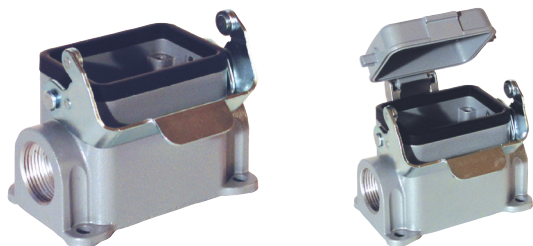
Metric hood		SKINTOP® gland	
size	part number	plastic	metal
Top entry			
M25	79020200	53111030	53112030
M32	79020400	53111040	53112040
Side entry			
M25	79022200	53111030	53112030
M32	79022400	53111040	53112040

* Metric hoods do not come with a neck

Recommended SKINTOP® assumes minimal OD variance. Additional configurations are available; please see our SKINTOP® section. If not otherwise specified, all values relating to the product are nominal values. Photographs are not to scale and are not true representations of the products in question.

EPIC® HB 6 standard surface mount base

Surface mount base with single lever




all dimensions are in mm

Technical data

IP Protection class: UL 50E Type 4, 12
IP65

Complete the installation

 HB dust covers
page 429

Approvals



PG

size	PG base part number	Dust cover	SKINTOP® gland	
			plastic	metal
One entry				
16	100050	no	53015040	52015740
16	100070	yes	53015040	52015740
Two entries				
16	100060	no	53015040	52015740
16	100090	yes	53015040	52015740

PG base provided with EPIC® SM/SP gland

NPT

size	NPT base part number	Dust cover	SKINTOP® gland	
			plastic	metal
One entry				
½"	100050NP	no	S1112	53112024
½"	100070NP	yes	S1112	53112024
Two entries				
½"	100060NP	no	S1112	53112024
½"	100090NP	yes	S1112	53112024

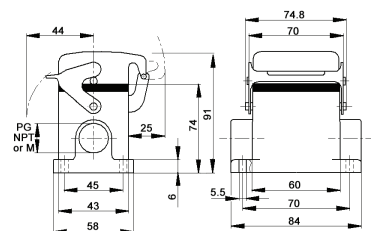
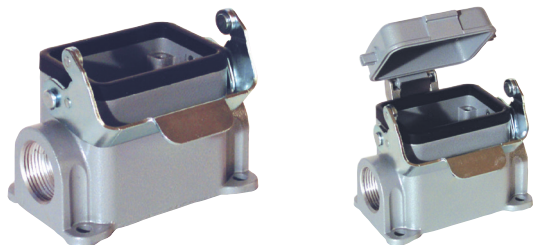
NPT base provided with NPT fitting

metric

size	Metric base part number	Dust cover	SKINTOP® gland	
			plastic	metal
One entry				
20	19005000	no	53111020	53112020
20	19007000	yes	53111020	53112020
25	79005600	no	53111030	53112030
25	79015600	yes	53111030	53112030
Two entries				
20	19006000	no	53111020	53112020
20	19009000	yes	53111020	53112020
25	79006600	no	53111030	53112030
25	79016600	yes	53111030	53112030

EPIC® HB 6 high profile surface mount base

Surface mount base with single lever




all dimensions are in mm

Technical data

IP Protection class: UL 50E Type 4, 12
IP65

Complete the installation

 HB dust covers
page 429

Approvals



PG

size	PG base part number	Dust cover	SKINTOP® gland	
			plastic	metal
One entry				
21	700052	no	53015050	52015750
21	700152	yes	53015050	52015750
29	700054	no	53015060	52015760
Two entries				
21	700062	no	53015050	52015750
21	700162	yes	53015050	52015750

PG base provided with EPIC® SM/SP gland

NPT

size	NPT base part number	Dust cover	SKINTOP® gland	
			plastic	metal
One entry				
¾"	700052NP	no	S1134	53112034
¾"	700152NP	yes	S1134	53112034
1"	700054NP	no	S1101	53112044
Two entries				
¾"	700062NP	no	S1134	53112034
¾"	700162NP	yes	S1134	53112034

NPT base provided with NPT fitting

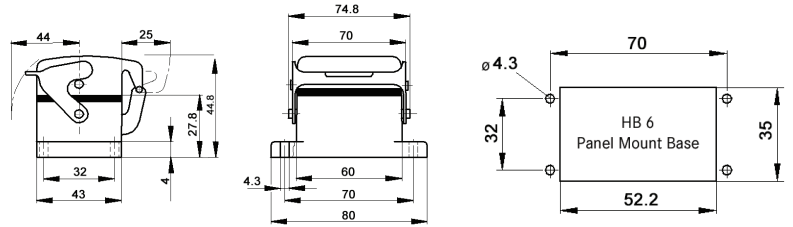
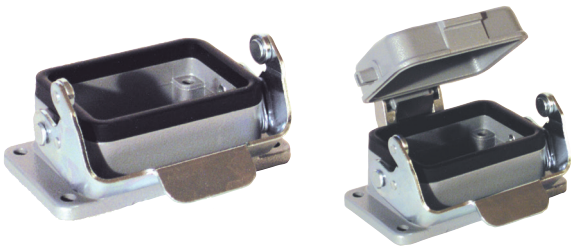
metric

size	Metric base part number	Dust cover	SKINTOP® gland	
			plastic	metal
One entry				
25	79005200	no	53111030	53112030
25	79015200	yes	53111030	53112030
32	79005400	no	53111040	53112040
32	79015400	yes	53111040	53112040
Two entries				
25	79006200	no	53111030	53112030
25	79016200	yes	53111030	53112030
29	79006400	no	53111040	53112040
29	79015400	yes	53111040	53112040

Recommended SKINTOP® assumes minimal OD variance. Additional configurations are available; please see our SKINTOP® section.
If not otherwise specified, all values relating to the product are nominal values.
Photographs are not to scale and are not true representations of the products in question.

EPIC® HB 6 panel mount base

Panel mount base with single lever



all dimensions are in mm

Technical data

IP Protection class: UL 50E Type 4, 12 IP65

Complete the installation

 HB dust covers page 429

Approvals

Dust cover included	Part number
no	100030C0
yes	100040C0

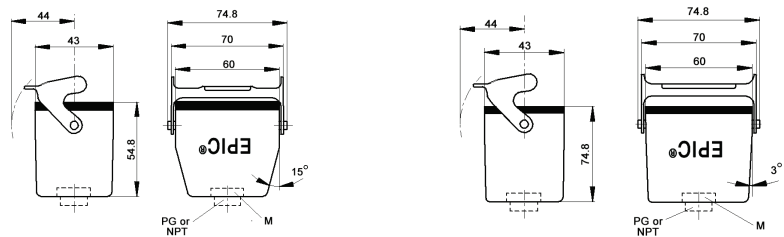
EPIC® HB 6 cable coupler hood

Cable coupler with single lever



standard profile

high profile




all dimensions are in mm

Technical data

IP Protection class: UL 50E Type 4, 12 IP65

Complete the installation

 HB dust covers page 429

Approvals

PG

PG coupler size	part number	SKINTOP® gland	
		plastic	metal
Standard profile			
PG 13	100140	53015050	52015750
PG 16	100240	53015060	52015760
High profile			
PG 21	700102	53015050	52015750
PG 29	700104	53015060	52015760

PG coupler provided with EPIC® SM/SP gland

NPT

NPT coupler size	part number	SKINTOP® gland	
		plastic	metal
Standard profile			
1/2"	100140NP	S 1112	53112024
1/2"	100240NP*	S 1112	53112024
High profile			
3/4"	700102NP	S 1134	53112034
1"	700104NP	S 1101	53112044

NPT coupler provided with NPT fitting

* Internal entry is wider for ease of assembly

metric

Metric coupler* size	part number	SKINTOP® gland	
		plastic	metal
Standard profile			
M20	19014000	53111030	53112030
M25	19024000	53111040	53112040
High profile			
M25	79010200	53111030	53112030

* Metric couplers do not come with a neck

Recommended SKINTOP® assumes minimal OD variance. Additional configurations are available; please see our SKINTOP® section. If not otherwise specified, all values relating to the product are nominal values. Photographs are not to scale and are not true representations of the products in question.