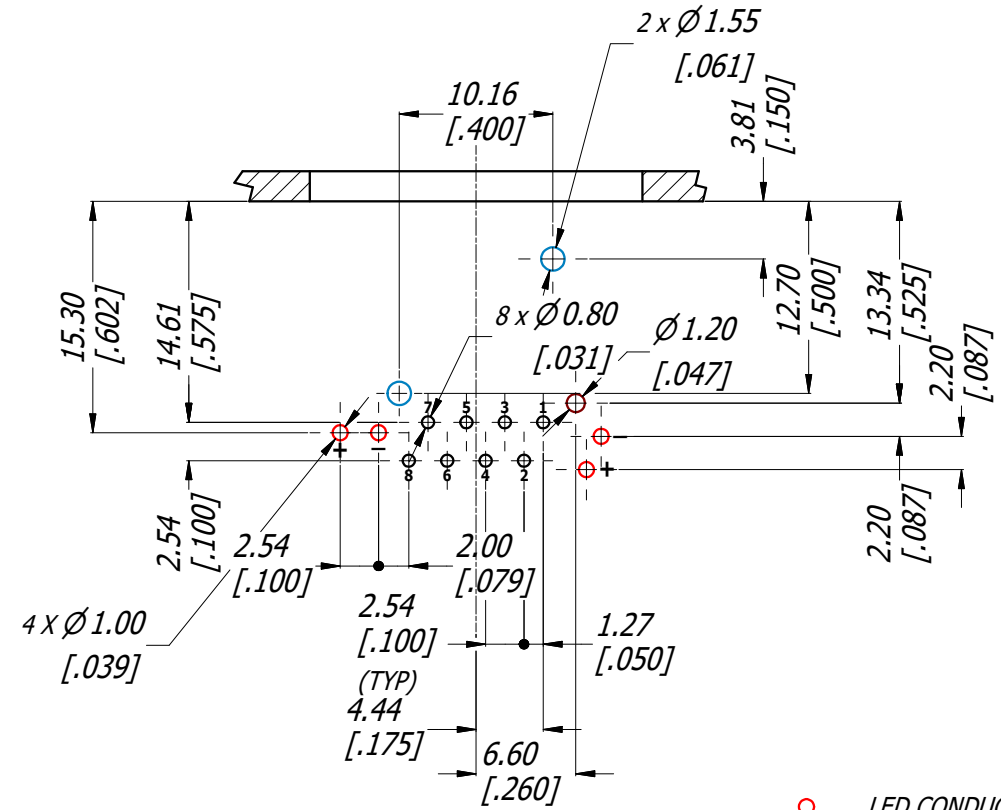


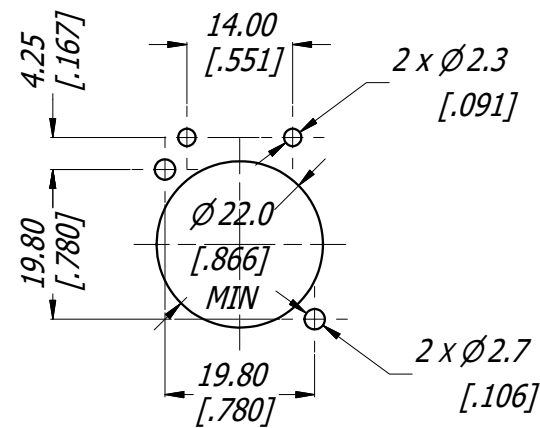
TABLE OF PART NUMBERS

PART No.	LED COLOR	
	LEFT	RIGHT
RJX8FB6HRGB	RED	GREEN
RJX8FB6HRYB	RED	YELLOW
RJX8FB6HRRB	RED	RED
RJX8FB6HGRB	GREEN	RED
RJX8FB6HGYB	GREEN	YELLOW
RJX8FB6HGGB	GREEN	GREEN
RJX8FB6HYRB	YELLOW	RED
RJX8FB6HYYB	YELLOW	YELLOW
RJX8FB6HYGB	YELLOW	GREEN
RJX8FB6HUUB	BLUE	BLUE

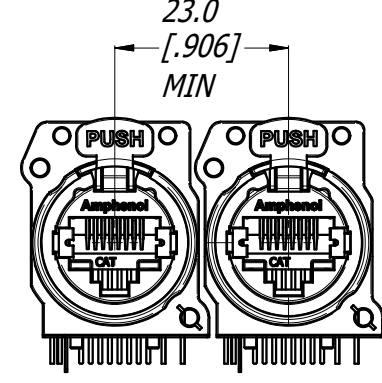


PCB LAYOUT
2:1
(CONNECTOR TOP VIEW)

- LED CONDUCTORS
- RJ45 CONTACTS
- RJ45 SHELL GROUND CONTACT
- CONNECTOR LOCATION PINS



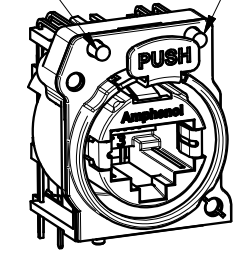
PANEL CUT OUT
1:1
(CONNECTOR FRONT VIEW)



MIN MOUNTING PITCH
1:1

LEFT LED
(REFER TO TABLE OF
PART No FOR
COLOR OPTIONS)

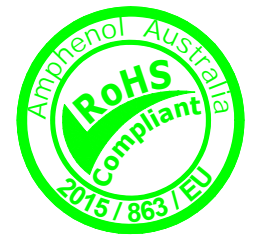
RIGHT LED



3D VIEW
1:1

SPECIFICATIONS:

- MATERIALS:
 - PLASTIC INSERT & HOUSING: HIGH TEMPERATURE THERMOPLASTIC FLAMMABILITY RATING UL94V-0 DSM Stanyl, 30% BLACK
 - FRONT METAL SHELL: ZINC ALLOY ZAMAK 3, NICKEL PLATE (B TYPE).
 - CONTACTS: PHOSPHORE BRONZE, 1.27 um GOLD PLATE ON MATING SURFACES, 1.27 um NICKEL MIN UNDERPLATE. 3.81 um MIN MATTE TIN ON CONTACT TAILS.
 - LATCH LOCK AND SPRING: SPRING STEEL, NICKEL PLATE.
 - EMI/RFI HOOD: BRASS, TIN PLATE
- ELECTRICAL CHARACTERISTICS:
 - RATED VOLTAGE: 125 VAC
 - TYPICAL CONTACT RESISTANCE: 20 mOhm
 - INSULATION RESISTANCE: >500 MOhm
 - DIELECTRIC STRENGTH: 1000 VAC, 60 SECONDS
 - TRANSMISSION SPECIFICATION/CLASS: COMPLIES WITH CAT6 PER TIA/EIA-568B
 - PoE+ COMPLIES WITH 802.3at Type 2



UNLESS OTHERWISE SPECIFIED TOLERANCE TO BE		THIS DOCUMENT IS THE PROPERTY OF AMPHENOL AUSTRALIA PTY. LTD. NO PART THEREOF MAY BE REPRODUCED AND USED WITHOUT THE PRIOR WRITTEN CONSENT OF THE OWNER.				Amphenol Amphenol Australia Pty.Ltd, 22 Industry Blvd, Carrum Downs VIC 3201	
LINER	ANGULAR	MATERIAL:	DRN:	T.N	DATE:	TITLE:	PART No:
X ± 0.5	X' ± 1	REFER SPECIFICATION	CKD:	P.M	DATE:	XLRnet CONNECTOR	REFER TO TABLE OF PART No.
X.X ± 0.1	X.X' ± 30'	DO NOT SCALE	APP'D:	P.M	DATE:	RJ45 RECP CAT6	DRAWING No.
X.X ± 0.05	X.X'X' ± 15'	DIMENSIONS IN MILLIMETRES	SCALE:	3:2	DATE:	NON-EMI SHIELD	55010837-000
BREAK ALL SHARP EDGES AND REMOVE ALL BURRS		THIRD ANGLE PROJECTION		SIZE:	A3	REV	2
						SHEET	7/7