

HANDLE AND STATOR

Glossy chrome-plated zinc alloy.

ROTOR

Chrome-plated zinc alloy.

FRONT PLATE

Stainless steel.

NUT

M22x1.5 in zinc-plated zinc-alloy.

SPRING WASHER

Black-oxide steel.

WASHER

Zinc-plated steel.

CLOSING LEVERS

Zinc-plated steel flat and two-point closing lever, thickness 3 mm.

SCREW

M7x10 Zinc-plated steel.

TWO KEYS

Nickel-plated brass, removable in two positions at 180°.

STANDARD EXECUTIONS

Handle rotation by 90° clockwise (right):

- **CSM.:** lock with 400 different combinations. Each lock has a couple of keys with different combination.
- **CSMU.:** lock with one combination. All locks have the same combination and can be opened with the same key.

Handle rotation by 90° anticlockwise (left):

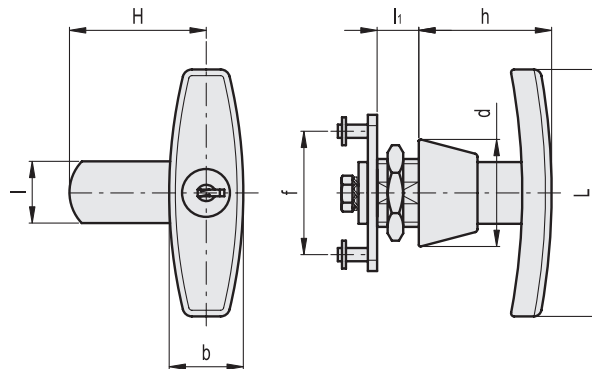
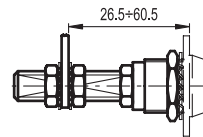
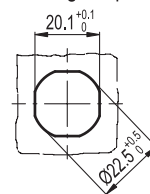
- **CSM-S:** lock with 400 different combinations. Each lock has a couple of keys with different combination.
- **CSMU-S:** lock with one combination. All locks have the same combination and can be opened with the same key.

SPECIAL EXECUTIONS AND ACCESSORIES

- Closing levers in other dimensions.
- Brass threaded extension (code 421140 C.PQ M7/53) and flat assembly lever (code 421145 LEVETTA PIANA 7x7) for prolonged positioning of the closing ledge



Drilling template



| Conversion Table | |
|-------------------|------|
| 1 mm = 0.039 inch | |
| H | |
| mm | inch |
| 50 | 1.97 |

| Code | Description | H | L | l | l1 | b | h | d | f | ⚖ |
|--------|-------------|----|----|----|------|----|------|----|----|-----|
| 421511 | CSM.50 | 50 | 80 | 20 | 13.5 | 24 | 43.5 | 35 | 42 | 240 |
| 421513 | CSMU.50 | 50 | 80 | 20 | 13.5 | 24 | 43.5 | 35 | 42 | 240 |
| 421512 | CSM.50-S | 50 | 80 | 20 | 13.5 | 24 | 43.5 | 35 | 42 | 240 |
| 421514 | CSMU-50-S | 50 | 80 | 20 | 13.5 | 24 | 43.5 | 35 | 42 | 240 |

