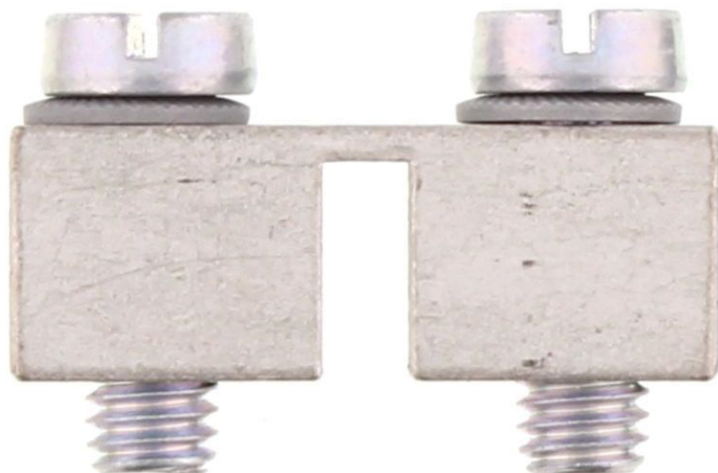


Data sheet

17255.0 SQ 50/2



Cross-connector, No. of poles: 2, Mounting type: Can be screwed on, Width: 30.6 mm, Rated cross-section: 50 mm², Colour: natural

Business data

Article number	17255.0
Article name	SQ 50/2
GTIN (EAN)	4044211186814
Packaging unit	10
Quantity unit	PC
Weight per piece (not including packaging)	31.54 g
Weight per piece (including packaging)	31.64 g
Unit of weight	G
Customs number	85389099
Country of origin	DE
Product description	Cross-connector
Colour	Natural

Technical data

Dimensions

Length	10 mm
Width	30.6 mm
Height	20 mm
Hole diameter	5.5 mm
Hole spacing (mid-point to mid-point)	18.6 mm
Pitch size	18.6 mm

Ratings

Max. voltage	1000 V
Rated current	150 A
Current load, max.	192 A
Rated cross-section	50 mm ²
Contamination degree	3

Connection data

No. of poles	2
Screw head	Slotted
Screw threading	M 6
Tightening torque, min.	3.2 Nm
Tightening torque, max.	3.7 Nm

Materials

Material	Copper
Surface	Tin-plated
Surface screw	Galvanized

Further technical data

Mounting type	Screwable
Number of bridged terminals	2

Environmental Product Compliance

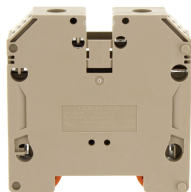
REACH Conform	yes
REACH Reference date	2022-06-10
REACH Candidate Substance Note	No
RoHS Conform	yes

Media



Accessories

##INVERSE##CONTA-CONNECT



Feed-through terminal, Screw connection, Mounting type: Mounting rail TS 35/7.5, Rated cross-section: 50 mm², Width: 18.5 mm, Colour: Beige

Article number	Article name	GTIN (EAN)	Packaging unit
<u>17156.2</u>	SRK 50/2A BG	4044211186715	10
