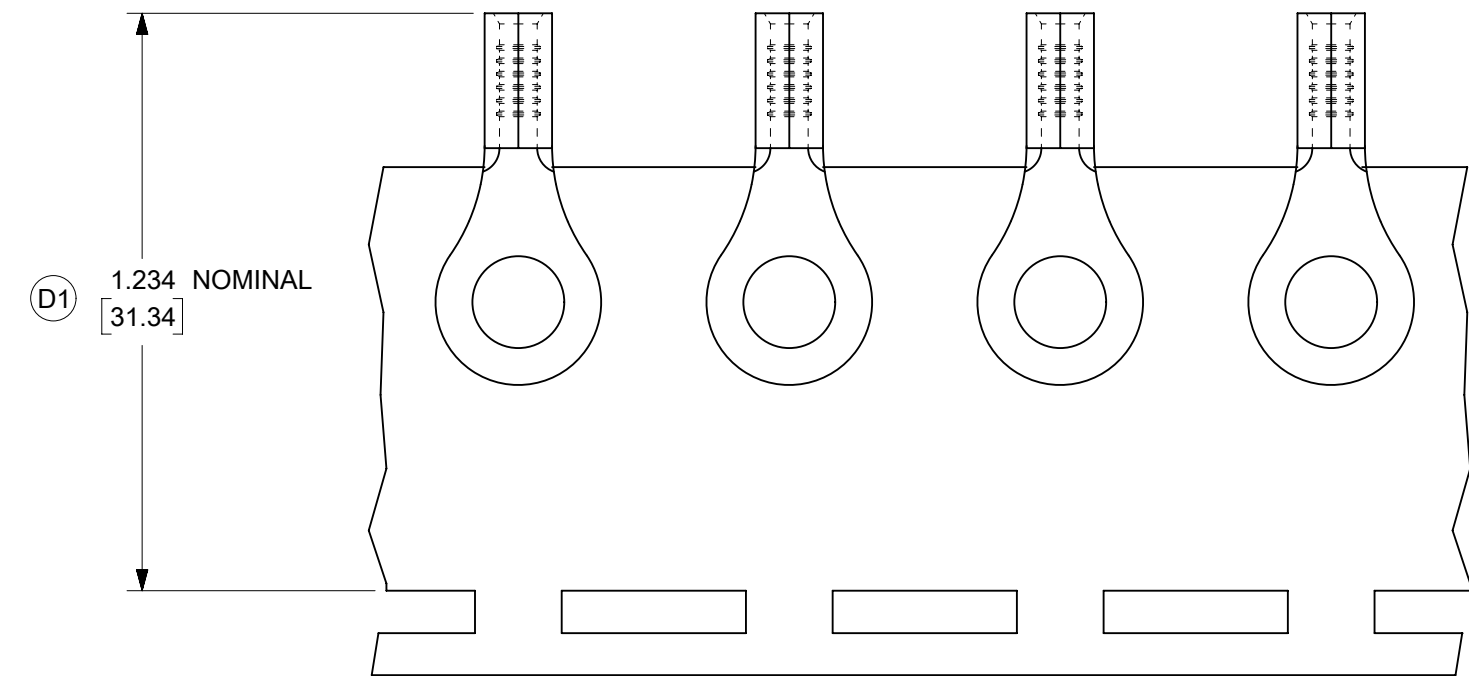
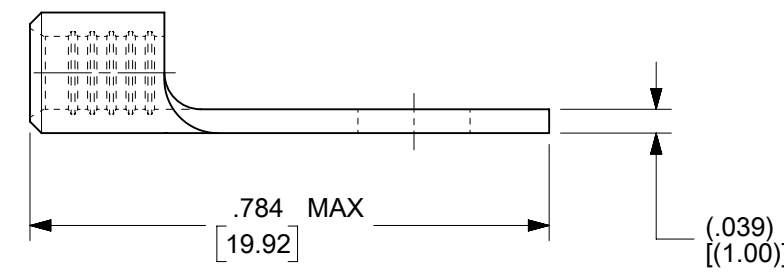
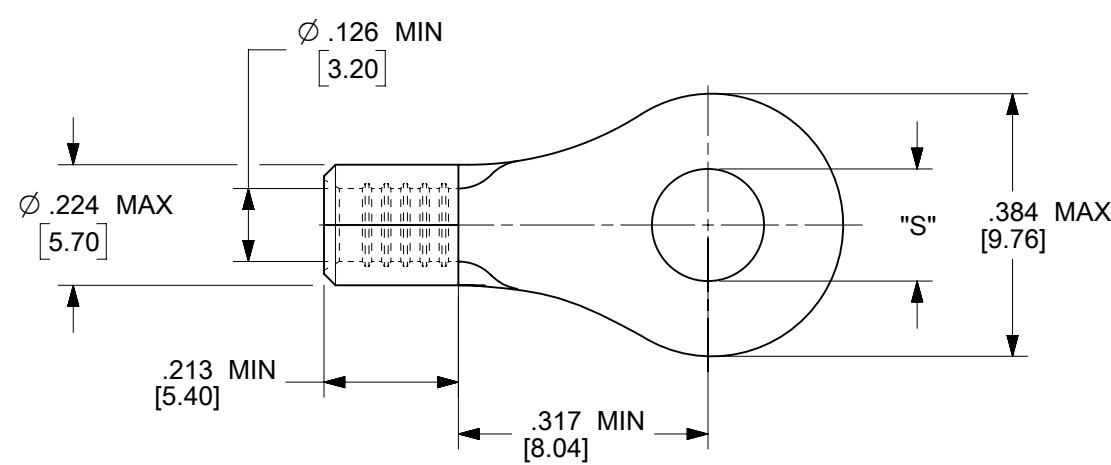


MATERIAL NO.	ENG. NO.	STUD SIZE	"S" MAX	DESCRIPTION
192030389	19203-0389	10	.212/5.38	LOOSE
192030094	C-S-128-10T	10	.212/5.38	TAPE



PARTS ON TAPE

NOTES:

1. MATERIAL: STEEL
2. WIRE SIZE: 12-10 AWG (4.0-6.0 MM<sup>2</sup>)
3. FINISH: NICKEL PLATED WITH OPTIONAL COPPER FLASH UNDERPLATING, IS ALLOWED FOR IMPROVED ADHESION.
4. PART IS ROHS COMPLIANT.
5. AMBIENT OPERATING TEMPERATURE UP TO 900 °F (483 °C).

THIS DRAWING CONTAINS INFORMATION THAT IS PROPRIETARY TO MOLEX ELECTRONIC TECHNOLOGIES, LLC AND SHOULD NOT BE USED WITHOUT WRITTEN PERMISSION									
FUNCTIONAL SYMBOLS	DIMENSION UNITS	SCALE	CURRENT REV DESC: REMASTERED IN ECTR AND UPDATED NOTE						
	IN/MM	4:1	<p><b>molex</b></p> <p>RING TONGUE TERMINAL, 12-10 AWG, KRIMPTITE, 900 DEG F (483 DEG C)</p> <p>PRODUCT CUSTOMER DRAWING</p>						
GENERAL TOLERANCES (UNLESS SPECIFIED)									
	MM	INCH							
	4 PLACES ±	±							
DIVISIONAL SYMBOLS	3 PLACES ±	±	EC NO: 708789		2022/05/12		<p>DOCUMENT NUMBER</p> <p>SD-19203-018</p>		
	2 PLACES ±	±	DRWN: PAWANC		2022/06/01				
	1 PLACE ±	±	CHKD: DMYRICK		2022/06/02		DOC TYPE	DOC PART	REVISION
	0 PLACES ±	±	APPR: JMACNEIL		INITIAL REVISION:		PSD	001	D1
	ANGULAR TOL ± °	± °	DRWN: DMYRICK		2005/04/06		MATERIAL NUMBER	CUSTOMER	SHEET NUMBER
DRAFT WHERE APPLICABLE MUST REMAIN WITHIN DIMENSIONS		THIRD ANGLE PROJECTION		DRAWING	SERIES	SEE CHART	GENERAL MARKET	1 OF 1	