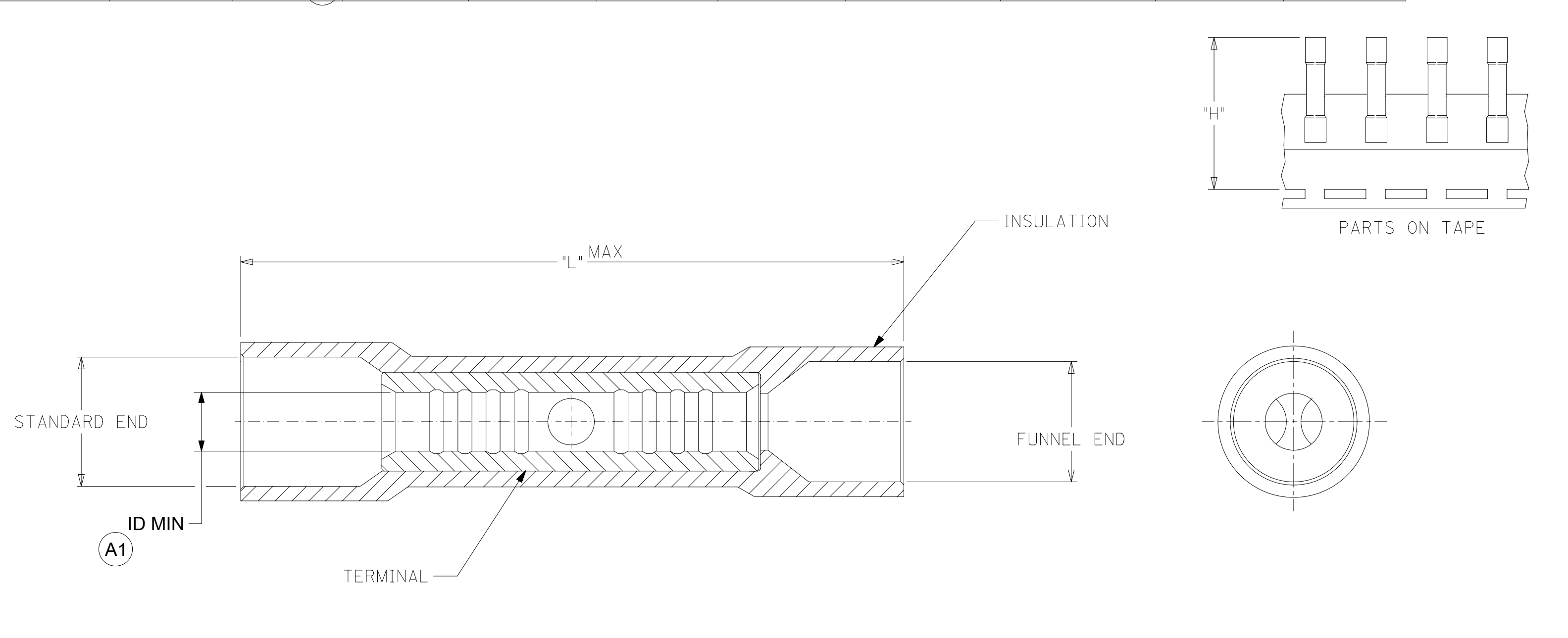


| 10        | 9        | 8              | 7         | 6     | 5         | 4         | 3            | 2          | 1           |                 |
|-----------|----------|----------------|-----------|-------|-----------|-----------|--------------|------------|-------------|-----------------|
|           |          |                |           |       |           |           |              |            |             | MATERIAL NUMBER |
|           |          |                |           |       |           |           | STANDARD END | FUNNEL END |             |                 |
| 192020063 | A-945-DK | 192020007      | A-945-DKT | 18-22 | DK RED    | .062/1.57 | .161/4.09    | .147/3.74  | 1.070/27.18 | 1.522/38.67     |
| 192020019 | B-931-DK | 192020021      | B-931-DKT | 14-16 | DK BLUE   | .081/2.57 | .199/5.05    | .185/4.70  | 1.070/27.18 | 1.524/38.71     |
| 192020039 | C-946-DK | ---- <b>A1</b> | ----      | 10-12 | DK YELLOW | .131/3.33 | .276/7.01    | .261/6.63  | 1.150/29.21 | 1.561/39.65     |



NOTES:  
 1. MATERIAL: COPPER.  
 2. PLATING: ELECTRON-TIN.  
 3. INSULATION: 6/6 NYLON

|   |        |                                       |       |         |   |                           |                            |              |  |
|---|--------|---------------------------------------|-------|---------|---|---------------------------|----------------------------|--------------|--|
| THIS DRAWING CONTAINS INFORMATION THAT IS PROPRIETARY TO MOLEX ELECTRONIC TECHNOLOGIES, LLC AND SHOULD NOT BE USED WITHOUT WRITTEN PERMISSION |        |                                       |       |         |   |                           |                            |              |  |
| FUNCTIONAL SYMBOLS  | FA = 0 | INCH/MM                               | SCALE | 4:1     | CURRENT REV DESC: MIGRATE TO NX & REMOVE OBSO TAPE P/N: 192020041 (C-946-DKT) |                           |                            |              |  |
|   | FE = 0 | GENERAL TOLERANCES (UNLESS SPECIFIED) |       |         |   |                           |                            |              |  |
| DIVISIONAL SYMBOLS  | FD = 0 | 4 PLACES                              | ±     | MM      | ±   | INCH                      | EC NO: 642893              |              |  |
|   |        | 3 PLACES                              | ±     |         | ±   | 0.005                     | DRWN: DMYRICK 2020/08/05   |              |  |
|   |        | 2 PLACES                              | ±     | 0.13    | ±   | 0.01                      | CHK'D: JMACNEIL 2020/08/05 |              |  |
|   |        | 1 PLACE                               | ±     | 0.25    | ±   |                           | APPR: JMACNEIL 2020/08/05  |              |  |
|   |        | 0 PLACES                              | ±     |         | ±   |                           | INITIAL REVISION:          |              |  |
| ANGULAR TOL   |        | ±                                     | °     |         |   | DRWN: BENDERLE 2004/04/27 |                            | 2004/04/27   |  |
| DRAFT WHERE APPLICABLE MUST REMAIN WITHIN DIMENSIONS  |        | THIRD ANGLE PROJECTION                |       | DRAWING | SERIES  | MATERIAL NUMBER           | CUSTOMER                   | SHEET NUMBER |  |
|   |        |                                       |       | B-SIZE  | 19202   | SD-19202-002              | GENERAL MARKET             | 1 OF 1       |  |