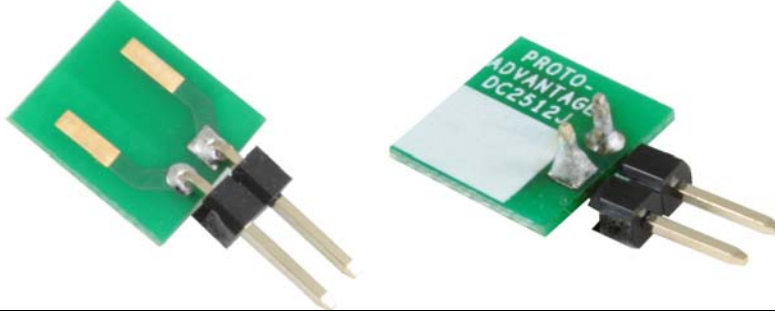


DC2512J-10X *Proto Advantage*

Datasheet revision 1.0

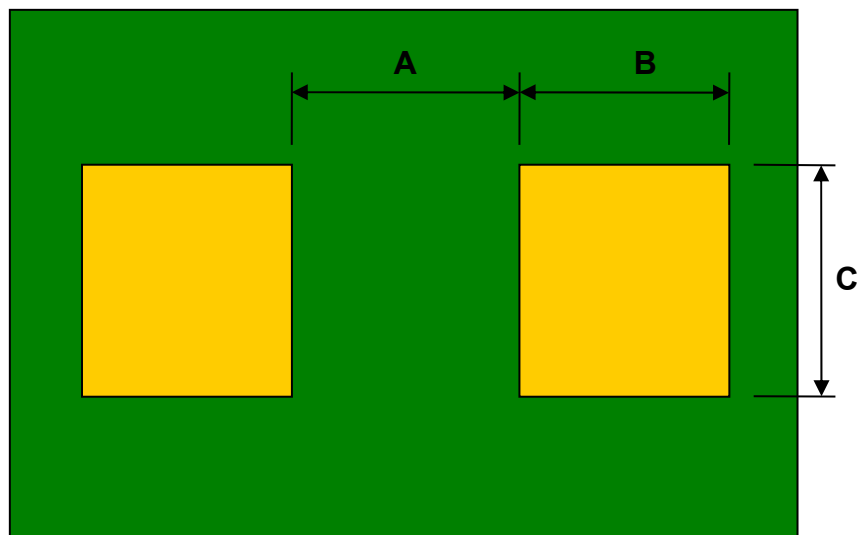
www.Proto-Advantage.com

10 pack: Discrete to TH Adapters – SM/TH/J pins



| DIMENSIONS | | | | | | |
|------------------------------------|-------------|-------------|-------------|--------------|--------------|--------------|
| Part Numbers | mm | | | inches | | |
| | A | B | C | A | B | C |
| DC0402S / DC0402T / DC0402J | 0.25 | 0.65 | 0.65 | 0.010 | 0.026 | 0.026 |
| DC0603S / DC0603T / DC0603J | 0.70 | 0.90 | 1.00 | 0.028 | 0.035 | 0.039 |
| DC0805S / DC0805T / DC0805J | 1.05 | 0.95 | 1.40 | 0.041 | 0.037 | 0.055 |
| DC1206S / DC1206T / DC1206J | 2.05 | 1.05 | 1.80 | 0.081 | 0.041 | 0.071 |
| DC1210S / DC1210T / DC1210J | 1.90 | 1.10 | 2.70 | 0.075 | 0.043 | 0.106 |
| DC1411S / DC1411T / DC1411J | 1.10 | 1.80 | 2.25 | 0.043 | 0.071 | 0.089 |
| DC1813S / DC1813T / DC1813J | 2.70 | 1.40 | 3.40 | 0.106 | 0.055 | 0.134 |
| DC2010S / DC2010T / DC2010J | 3.45 | 1.25 | 2.70 | 0.136 | 0.049 | 0.106 |
| DC2220S / DC2220T / DC2220J | 3.75 | 1.55 | 5.40 | 0.148 | 0.061 | 0.213 |
| DC2413S / DC2413T / DC2413J | 2.60 | 2.25 | 2.30 | 0.102 | 0.089 | 0.091 |
| DC2512S / DC2512T / DC2512J | 4.85 | 1.25 | 3.40 | 0.191 | 0.049 | 0.134 |
| DC2917S / DC2917T / DC2917J | 4.15 | 2.05 | 4.60 | 0.163 | 0.081 | 0.181 |
| DC2924S / DC2924T / DC2924J | 3.85 | 2.35 | 4.15 | 0.152 | 0.093 | 0.163 |

Top View (SMD Footprint)



(Representative drawing only - not to scale)