



Quality Products. Service Excellence.

ABS Plastic Multi-Purpose Enclosures w/ PC Board Standoffs 1591XX

Series

Flame Retardant, General Purpose, Flanged Lid Options

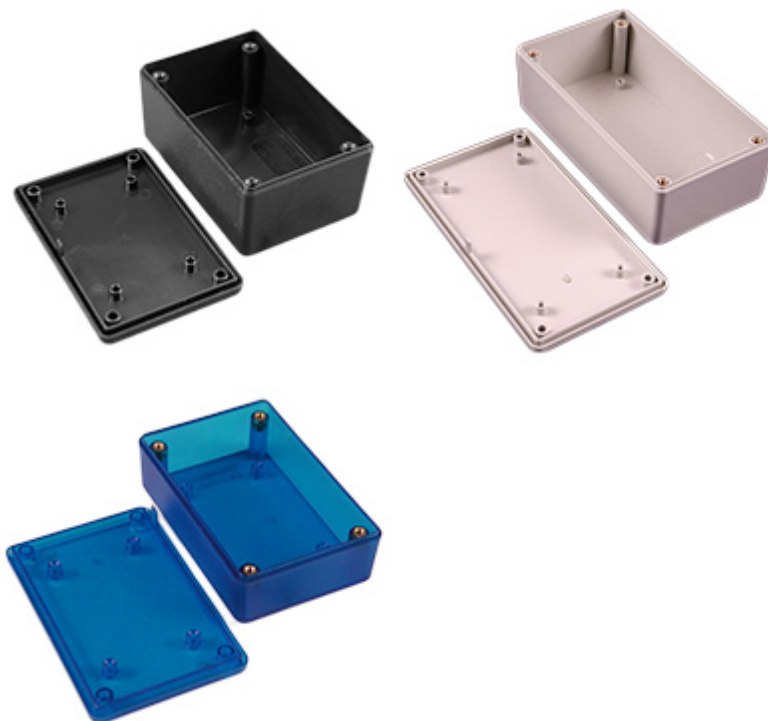
Key Features:



- Ideally suited for mounting printed circuit boards horizontally.
- Internal sides of enclosure are smooth for easy connector installation except for the largest enclosure. 1591XXF. 1591XXF size is a universal type which includes P.C.board standoffs in the lid and enclosure PLUS includes card guides.
- Strong tongue and groove lid to box construction provides protection against access of dust and splashing water.
- Designed to meet IP54.
- Lid and box both contain - molded in PC board standoffs.
- Standard black and gray versions molded from easy to machine, flame retardant ABS plastic (material carries a UL flammability rating of 94V-0).
- Transparent blue and all economy versions are molded from general purpose (not flame-retardant) plastic.
- Stocked in satin texture black and grey.
- On standard versions, the lid is secured with M3 x 10 mm Phillips machine screws threaded into integral brass bushings. Perfect for applications with repetitive assembly and disassembly are required.
- Economy versions are assembled with self tapping screws into fully plastic posts.
- Black and transparent blue enclosures include black screws, gray enclosures include nickel plated screws.

Photo Features:

Available in black, gray, or transparent blue. PC board mounting bosses located inside the box and lid and are sized for #4 x 1/4" self-tapping screws (not included with enclosure).



Also available with mounting flanges integrated into the lid (black and gray only)

Accessory flanges are also available (sold separately from enclosures).



Hardware:

- Replacement machine lid screws for standard flame retardant versions are available in packs of 100: **1591MS100** (nickel plated) or **1591MS100BK** (black)
- Replacement self-tapping lid screws for economy versions are available in packs of 100: **1591TS100** (nickel plated) or **1591TS100BK** (black)
- PC board screws are available in pack of 50, **1593ATS50**, and pack of 100, **1593ATS100**

Accessories

- Plastic Flanges

Enclosures Without Mounting Flanges

| Flame Retardant Plastic w/ Brass Screw Inserts | | General Purpose ABS w/ Brass Screw Inserts | General Purpose ABS w/ Self Tapping Screws | Length | Width | Enclosure Depth (Less Lid) |
|---|-----------|---|---|--------|-------|----------------------------------|
| Black | Gray | Transparent Blue | Black | | | |
| 1591XXMBK | 1591XXMGY | 1591XXMTBU | 1591XXMSBK | 3.30 | 2.20 | 0.90 |
| 1591XXLBK | 1591XXLGY | 1591XXLTBU | 1591XXLSBK | 3.40 | 2.20 | 1.40 |
| 1591XXABK | 1591XXAGY | 1591XXATBU | 1591XXASBK | 3.90 | 2.00 | 0.80 |
| 1591XXSBK | 1591XXSGY | 1591XXSTBU | 1591XXSSBK | 4.30 | 3.20 | 1.60 |
| 1591XXBBK | 1591XXBGY | 1591XXBTBU | 1591XXBSBK | 4.40 | 2.50 | 1.10 |
| 1591XXCBK | 1591XXCGY | 1591XXCTBU | 1591XXCSBK | 4.70 | 2.60 | 1.40 |
| 1591XXTBK | 1591XXTGY | 1591XXTTBU | 1591XXTSBK | 4.80 | 3.20 | 2.20 |
| 1591XXGBK | 1591XXGGY | 1591XXGTBU | 1591XXGSBK | 4.80 | 3.70 | 1.40 |
| 1591XXUBK | 1591XXUGY | | 1591XXUSBK | 4.86 | 4.86 | 2.25 |
| 1591XXDBK | 1591XXDGY | 1591XXDTBU | 1591XXDSBK | 6.00 | 3.20 | 1.80 |
| 1591XXEBK | 1591XXEGY | 1591XXETBU | 1591XXESBK | 7.60 | 4.40 | 2.20 |
| 1591XXFBK | 1591XXFGY | | 1591XXFSBK | 8.70 | 5.90 | 2.30 |

Enclosures With Mounting Flanges

| Flame Retardant Plastic w/ Brass Screw Inserts | | General Purpose ABS w/ Self Tapping Screws | Length | Width | Enclosure Depth (Less Lid) |
|---|-------------|---|--------|-------|----------------------------------|
| Black | Gray | Black | | | |
| 1591XXMFLBK | 1591XXMFLGY | 1591XXMSFLBK | 3.30 | 2.20 | 0.90 |
| 1591XXLFLBK | 1591XXLFLGY | 1591XXLSFLBK | 3.40 | 2.20 | 1.40 |
| 1591XXAFLBK | 1591XXAFLGY | 1591XXASFLBK | 3.90 | 2.00 | 0.80 |
| 1591XXSFLBK | 1591XXSFLGY | 1591XXSSFLBK | 4.30 | 3.20 | 1.60 |
| 1591XXBFLBK | 1591XXBFLGY | 1591XXBSFLBK | 4.40 | 2.50 | 1.10 |
| 1591XXCFLBK | 1591XXCFLGY | 1591XXCSFLBK | 4.70 | 2.60 | 1.40 |
| 1591XXTFLBK | 1591XXTFLGY | 1591XXTSFLBK | 4.80 | 3.20 | 2.20 |
| 1591XXGFLBK | 1591XXGFLGY | 1591XXGSFLBK | 4.80 | 3.70 | 1.40 |
| 1591XXUFLBK | 1591XXUFLGY | 1591XXUSFLBK | 4.86 | 4.86 | 2.25 |
| 1591XXDFLBK | 1591XXDFLGY | 1591XXDSFLBK | 6.00 | 3.20 | 1.80 |
| 1591XXEFLBK | 1591XXEFLGY | 1591XXESFLBK | 7.60 | 4.40 | 2.20 |
| 1591XXFFLBK | 1591XXFFLGY | 1591XXFSFLBK | 8.70 | 5.90 | 2.30 |

Tags: **project box**

Data subject to change without notice

© 2023. Hammond Manufacturing Ltd. All rights reserved.