
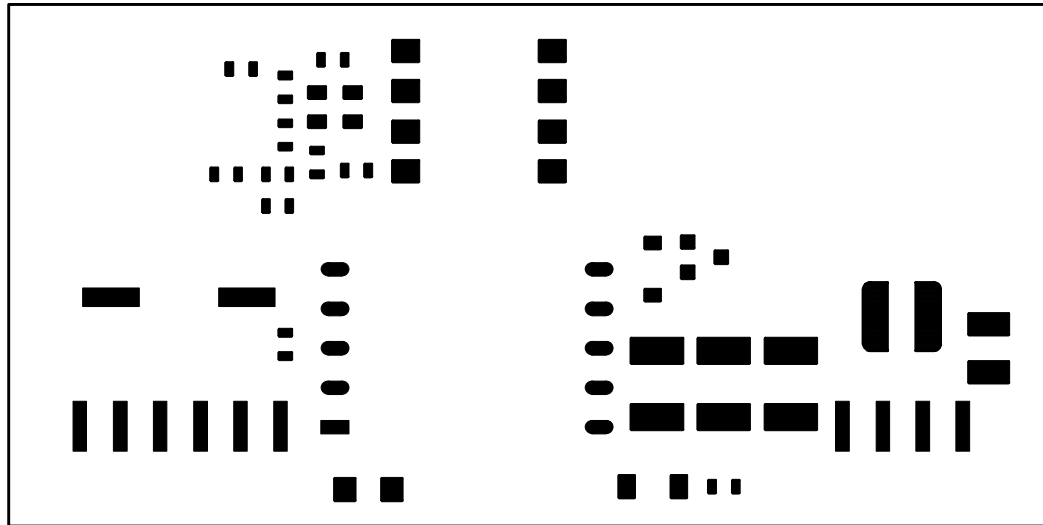
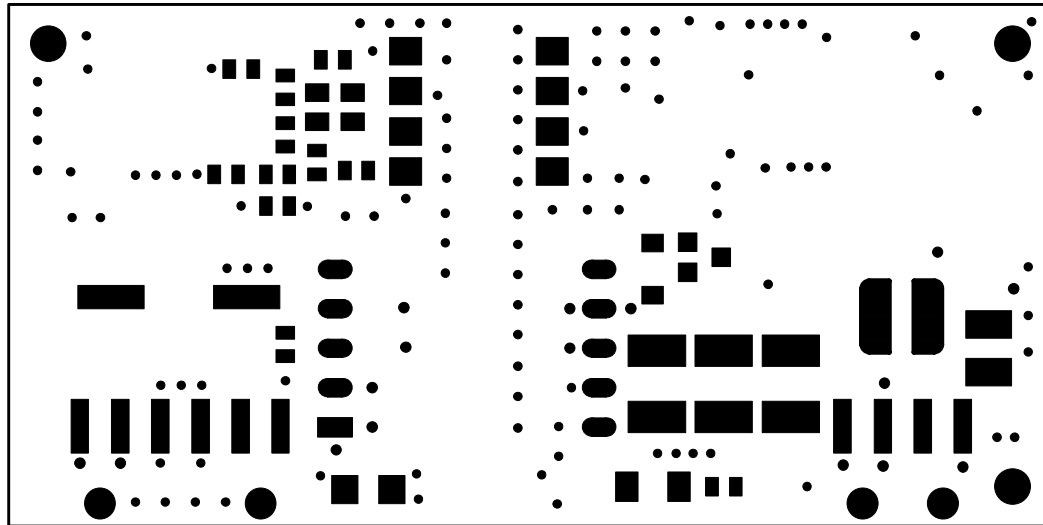


This reference schematic and the design it embodies is owned by Digi International.
 A LICENSE TO USE and modify this design IS GRANTED TO DIGI INTERNATIONAL CUSTOMERS FOR DEVELOPMENT AND PRODUCTION PURPOSES.
 IT MAY BE USED ONLY IN CONJUNCTION WITH A DIGI INTERNATIONAL PRODUCT AND FOR NO OTHER PURPOSE.

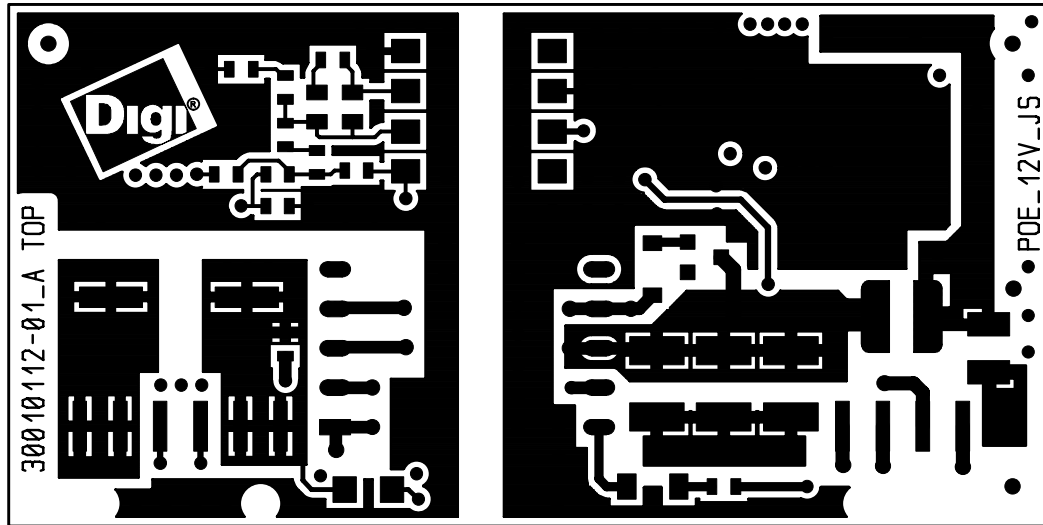
Usable for:				Scale: 1.5		Filename: POE_12V_J5.pcb	
				POE Application Kit <small>Note: This layout version is for reference only. Some parts may not be equipped or may have different values.</small>			
				Designer	Date	Name	Title: Placement TOP Side
				SC	09.10.2008		
				Approved			
				ISO			
						Partnumber:	Sheet
						30010114-01 Rev A	1
Rev.	Modification	Date	Name	Provided for:		Provided by:	
01	Initial Layout	09.10.08	SC			of 2	



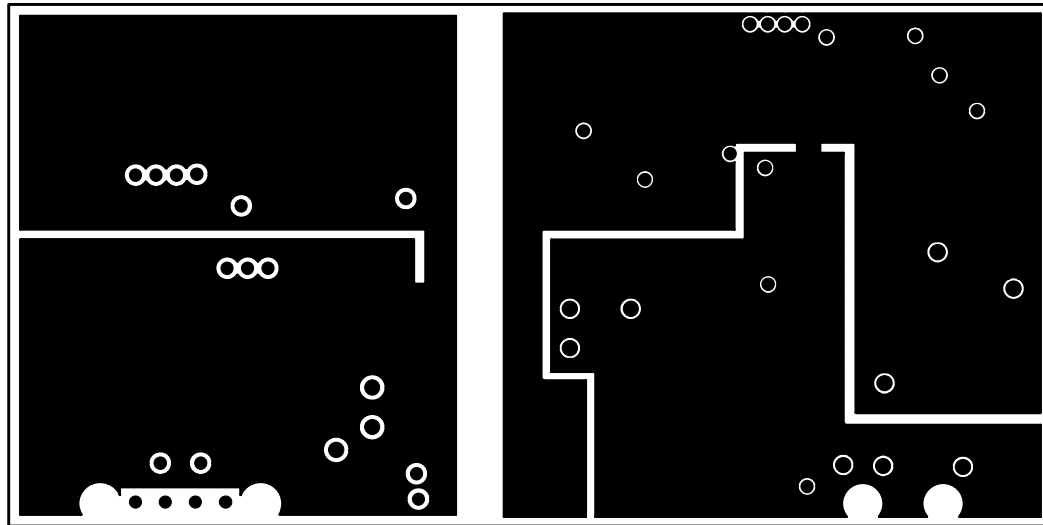
POE_12V_JS Paste TOP
09.10.08



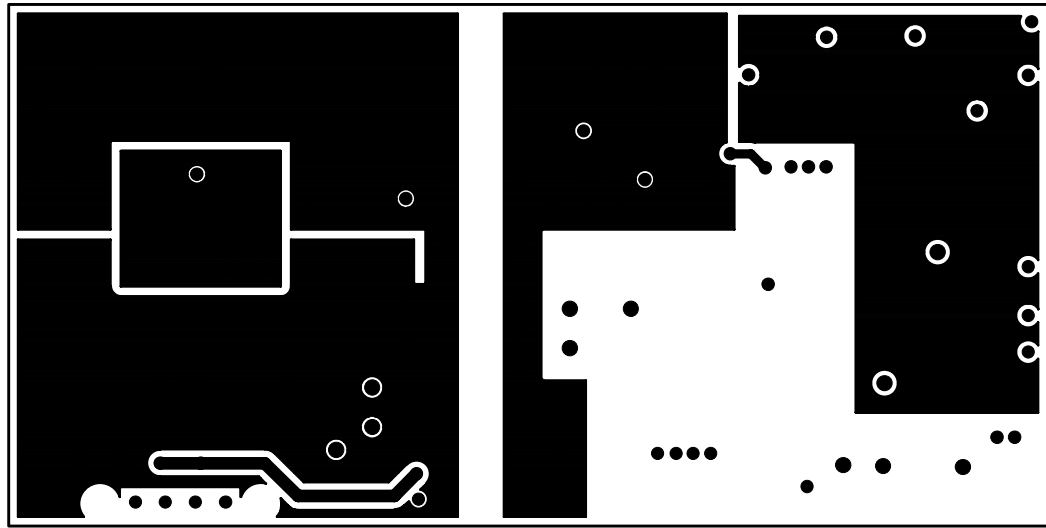
POE_12V_JS Solder Mask TOP
09.10.08



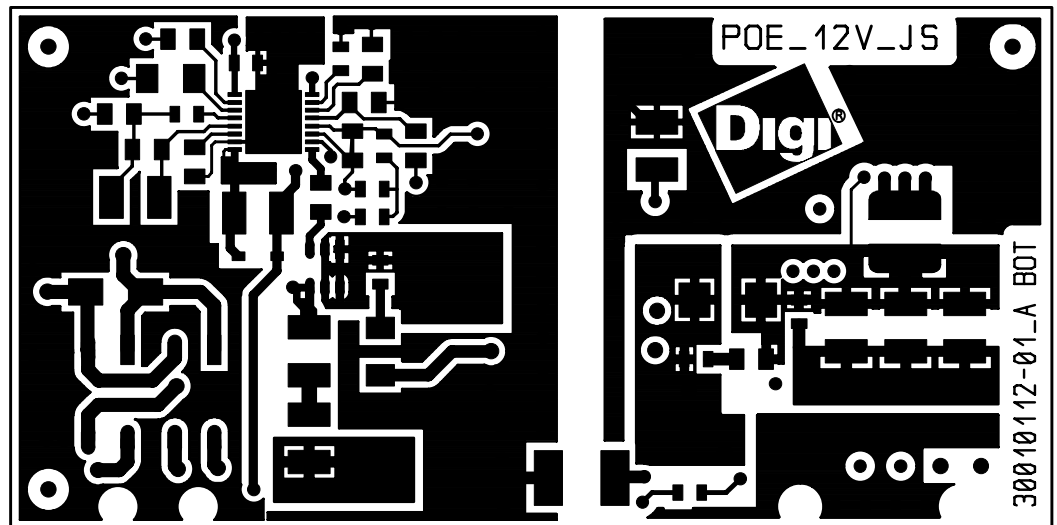
POE_12V_JS Layer 1 TOP
09.10.08



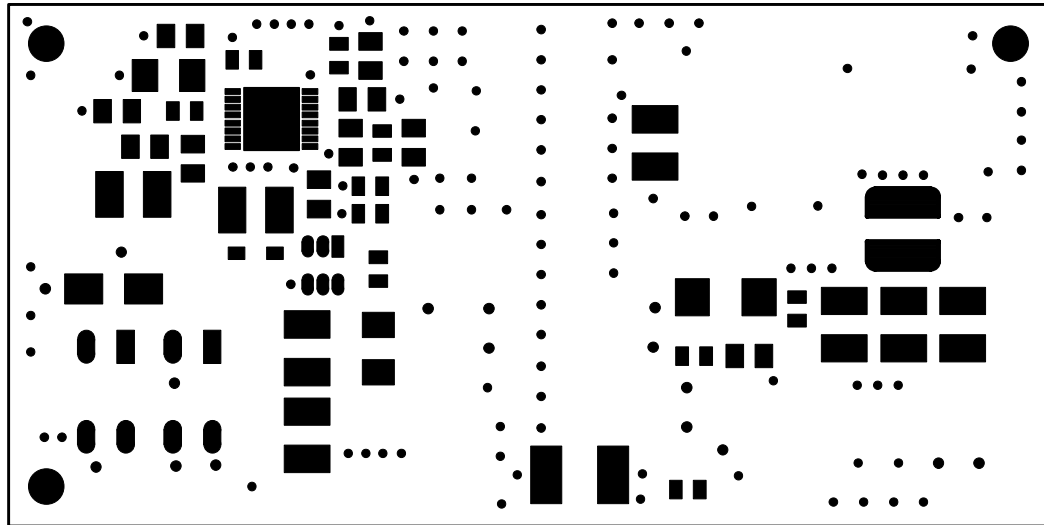
POE_12V_JS Layer2 GND
09.10.08



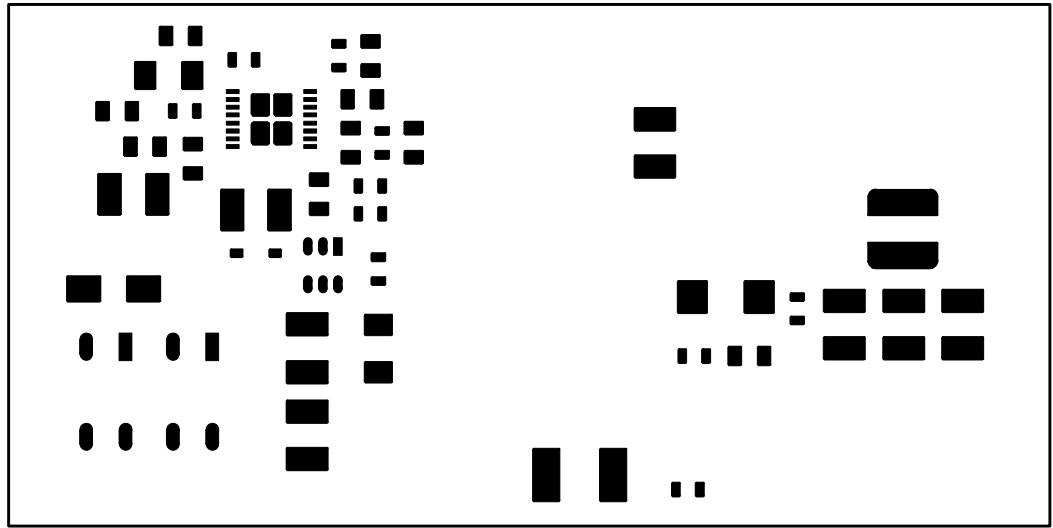
POE_12V_JS Layer3 VCC/GND
09.10.08



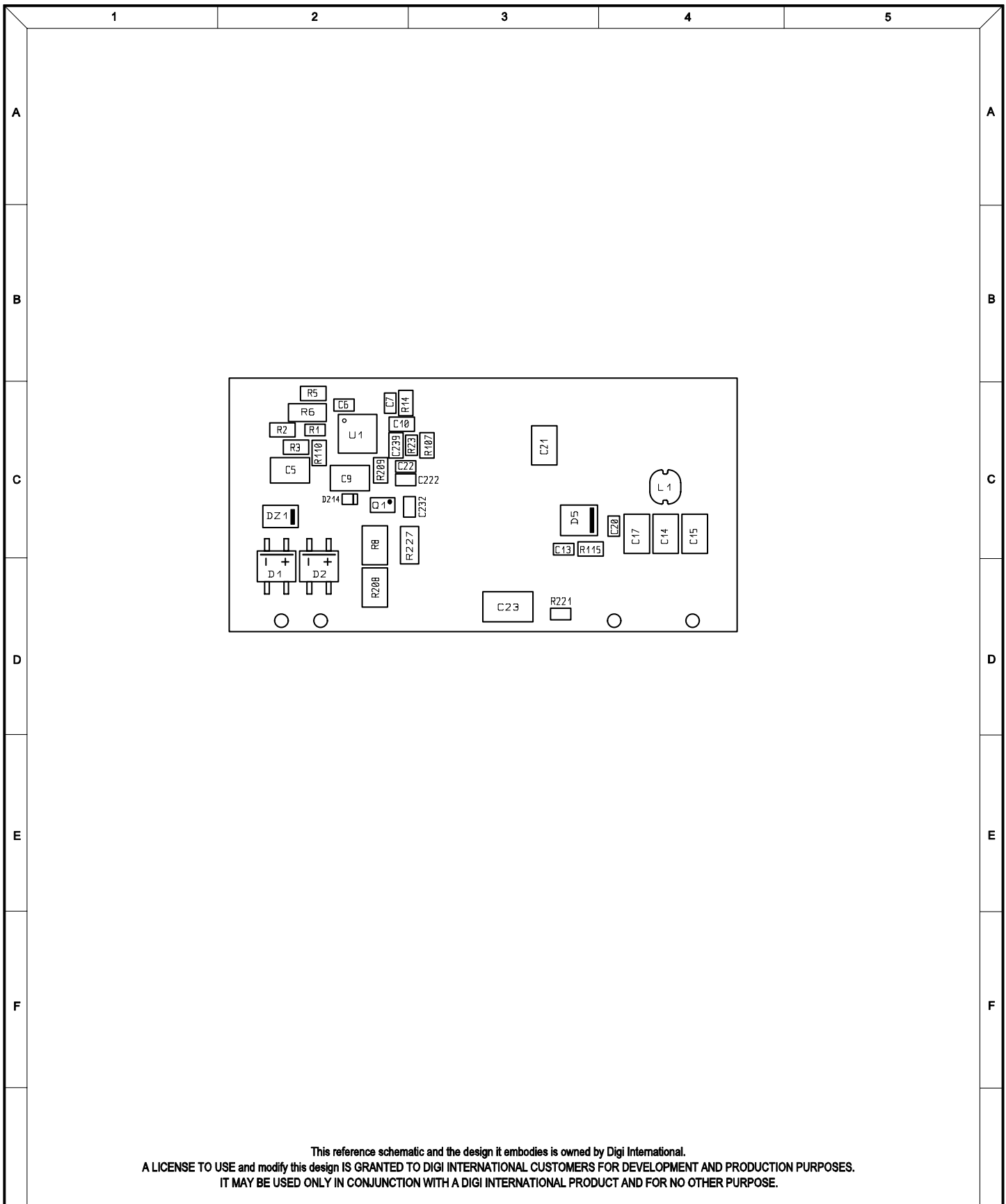
POE_12V_JS Layer 4 BOT
09.10.08



POE_12V_JS Solder Mask BOT
09.10.08



POE_12V_JS Paste BOT
09.10.08



This reference schematic and the design it embodies is owned by Digi International.
 A LICENSE TO USE and modify this design IS GRANTED TO DIGI INTERNATIONAL CUSTOMERS FOR DEVELOPMENT AND PRODUCTION PURPOSES.
 IT MAY BE USED ONLY IN CONJUNCTION WITH A DIGI INTERNATIONAL PRODUCT AND FOR NO OTHER PURPOSE.

Usable for:				Scale: 1.5		Filename: POE_12V_J5.pcb		
				POE Application Kit <small>Note: This layout version is for reference only. Some parts may not be equipped or may have different values.</small>				
				Designer	Date	Name	Title: Placement Bottom Side	
				SC	09.10.2008			
				Approved				
				ISO				
							Partnumber:	Sheet
							30010114-01 Rev A	
Rev.	Modification	Date	Name	Provided for:			of	
01	Initial Version	09.10.08	SC				2	
				Provided by:				