

## MSM-225 Threaded Magnet M5



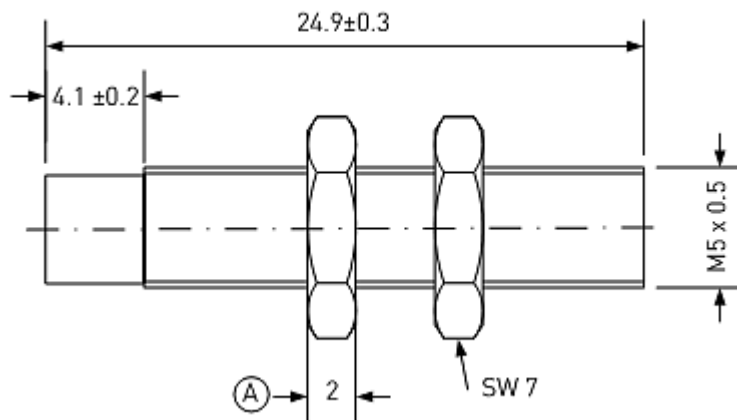
### Data

|                  |                  |
|------------------|------------------|
| Housing Material | brass, Ni-coated |
| Potting Material | Epoxy, black     |
| Orientation      | axially          |

|                                |                         |           |
|--------------------------------|-------------------------|-----------|
| Magnetic Material              | N30H                    |           |
| Remanence Br                   | mT                      | 1105      |
| Coercivity HcB                 | kA/m                    | 836       |
| Coercivity HcJ                 | kA/m                    | 1274      |
| Energy Product (BH) max.       | kJ/m <sup>3</sup>       | 235       |
| Magnetic Moment M              | x10 <sup>-5</sup> Vs cm | 1.21      |
| Operating Temperature          | °C                      | -20 to 85 |
| Temperature Coefficient Tk(Br) | %/°C                    | -0.11     |

Nominal values unless otherwise specified

### Dimensions in mm



Customized types, other magnet materials and high temperature grades available.