

preliminary

Schottky Diode

$$V_{RRM} = 25 \text{ V}$$

$$I_{FAV} = 2 \times 20 \text{ A}$$

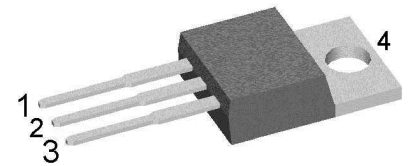
$$V_F = 0.4 \text{ V}$$

High Performance Schottky Diode
 Low Loss and Soft Recovery
 Common Cathode

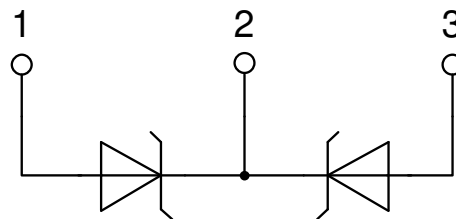
Part number

DSSK38-0025B

Marking on Product: DSSK38-0025B



Backside: cathode



Features / Advantages:

- Very low V_f
- Extremely low switching losses
- Low I_{rm} values
- Improved thermal behaviour
- High reliability circuit operation
- Low voltage peaks for reduced protection circuits
- Low noise switching

Applications:

- Rectifiers in switch mode power supplies (SMPS)
- Free wheeling diode in low voltage converters

Package: TO-220

- Industry standard outline
- RoHS compliant
- Epoxy meets UL 94V-0

Disclaimer Notice

Information furnished is believed to be accurate and reliable. However, users should independently evaluate the suitability of and test each product selected for their own applications. Littelfuse products are not designed for, and may not be used in, all applications. Read complete Disclaimer Notice at www.littelfuse.com/disclaimer-electronics.



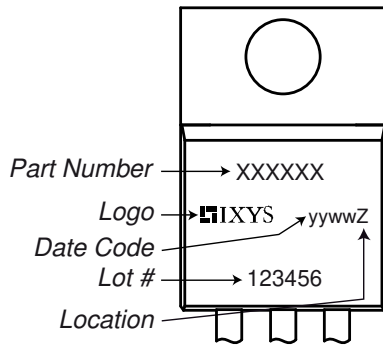
Schottky				Ratings			
Symbol	Definition	Conditions		min.	typ.	max.	Unit
V_{RSM}	max. non-repetitive reverse blocking voltage					25	V
V_{RRM}	max. repetitive reverse blocking voltage					25	V
I_R	reverse current, drain current	$V_R = 25\text{ V}$		$T_{VJ} = 25^\circ\text{C}$		20	mA
		$V_R = 25\text{ V}$		$T_{VJ} = 100^\circ\text{C}$		80	mA
V_F	forward voltage drop	$I_F = 20\text{ A}$		$T_{VJ} = 25^\circ\text{C}$		0.48	V
		$I_F = 40\text{ A}$				0.61	V
		$I_F = 20\text{ A}$		$T_{VJ} = 125^\circ\text{C}$		0.40	V
		$I_F = 40\text{ A}$				0.58	V
I_{FAV}	average forward current	$T_C = 130^\circ\text{C}$	rectangular	$T_{VJ} = 150^\circ\text{C}$		20	A
			d = 0.5				
V_{FO}	threshold voltage	} for power loss calculation only				0.20	V
r_F	slope resistance					9	mΩ
R_{thJC}	thermal resistance junction to case					1.4	K/W
R_{thCH}	thermal resistance case to heatsink					0.5	K/W
P_{tot}	total power dissipation			$T_C = 25^\circ\text{C}$		90	W
I_{FSM}	max. forward surge current	t = 10 ms; (50 Hz), sine; $V_R = 0\text{ V}$		$T_{VJ} = 45^\circ\text{C}$		330	A
C_J	junction capacitance	$V_R = 5\text{ V}$	f = 1 MHz	$T_{VJ} = 25^\circ\text{C}$		1.26	nF



preliminary

Package TO-220			Ratings			
Symbol	Definition	Conditions	min.	typ.	max.	Unit
I_{RMS}	RMS current	per terminal ¹⁾			35	A
T_{VJ}	virtual junction temperature		-55		150	°C
T_{op}	operation temperature		-55		125	°C
T_{stg}	storage temperature		-55		150	°C
Weight				2		g
M_D	mounting torque		0.4		0.6	Nm
F_C	mounting force with clip		20		60	N

Product Marking



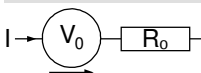
Ordering	Ordering Number	Marking on Product	Delivery Mode	Quantity	Code No.
Standard	DSSK38-0025B	DSSK38-0025B	Tube	50	498246

Similar Part	Package	Voltage class
DSSK38-0025BS	TO-263AB (D2Pak) (2)	25

Equivalent Circuits for Simulation

* on die level

$T_{VJ} = 150^{\circ}C$

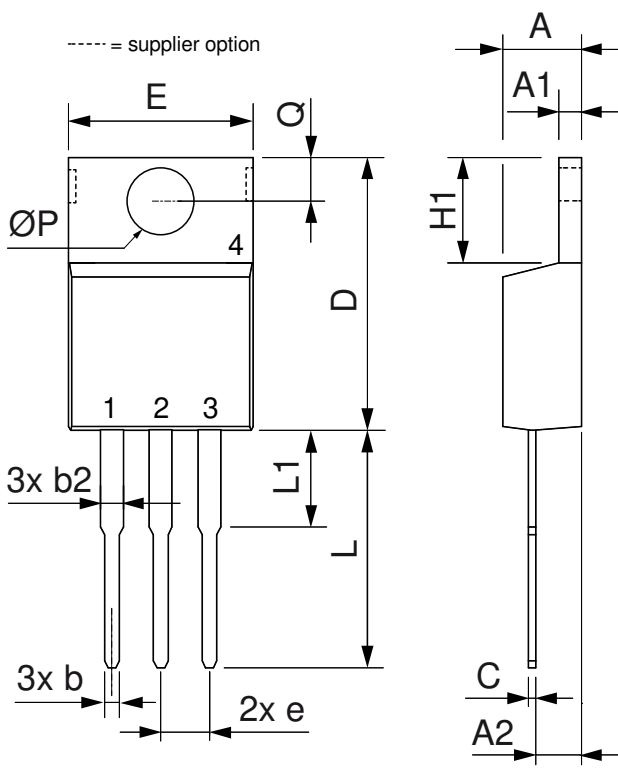


Schottky

$V_{0\ max}$	threshold voltage	0.2	V
$R_{0\ max}$	slope resistance *	5.8	mΩ



Outlines TO-220



Dim.	Millimeter		Inches	
	Min.	Max.	Min.	Max.
A	4.32	4.82	0.170	0.190
A1	1.14	1.39	0.045	0.055
A2	2.29	2.79	0.090	0.110
b	0.64	1.01	0.025	0.040
b2	1.15	1.65	0.045	0.065
C	0.35	0.56	0.014	0.022
D	14.73	16.00	0.580	0.630
E	9.91	10.66	0.390	0.420
e	2.54	BSC	0.100	BSC
H1	5.85	6.85	0.230	0.270
L	12.70	13.97	0.500	0.550
L1	2.79	5.84	0.110	0.230
ØP	3.54	4.08	0.139	0.161
Q	2.54	3.18	0.100	0.125

