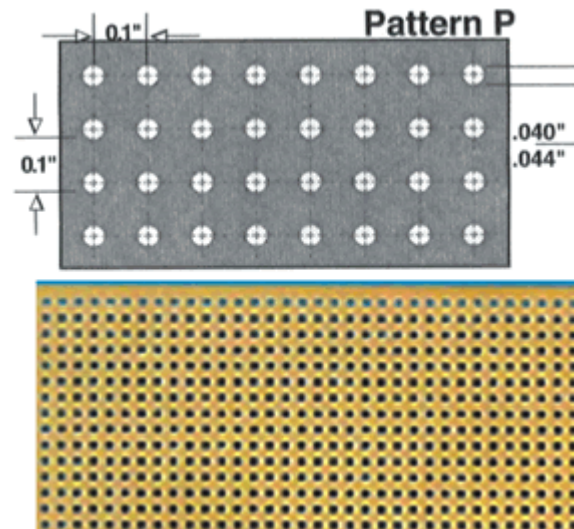




Vectorbord® Part Number : 84P44

4.5" W x 8.5" L ... 0.042" Hole Dia.CEM-1 Epoxy Glass Composite ... Unclad Punchbord

Dimension	: 4.5" W x 8.5" L (114.3 mm x 215.9 mm)
Hole Dia.	: 0.042" (1.1mm)
Grid & Pattern	: 0.100" x 0.100" and Pattern " P "
Board Thickness	: 0.062" (1.57mm)
Material	: CEM-1 Epoxy Glass Composite
NEMA Grade	: CEM-1
UL Flammability Class	: 94V-0
Mil - STD	: - - -



email us your requirements : inquire@vectorelect.com

11115 Vanowen St., North Hollywood, CA 91605, USA

Tel.: (818) 985 8208, (800) 423 5659; Fax : (818) 985 7708

Circbord®, Vectorbord® and VectorPak® are registered trademarks of Vector Electronics & Technology, Inc.
CompactPCI® is a registered trademark of PCIMG. © 2001 Vector Electronics & Technology, Inc. - All Rights Reserved