

# EL-USB-RT INSTALLATION AND OPERATION GUIDE



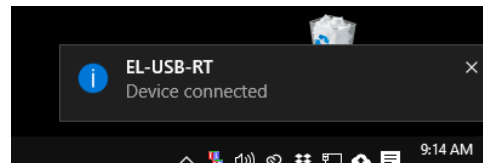
## USB DRIVER INSTALLATION

Windows™ 7, 8 & 10

Installing device...



Please wait while Setup installs necessary files on your system. This may take several minutes.



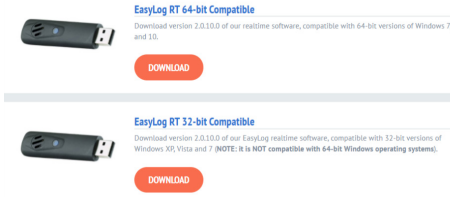
2. Installation is now complete

1. Insert the USB data logger into a USB port on the computer. The following screens should automatically appear as the EL-USB-RT uses a standard built in Windows driver.

**You have successfully installed the necessary software and driver for your EL-USB-RT data logger.**

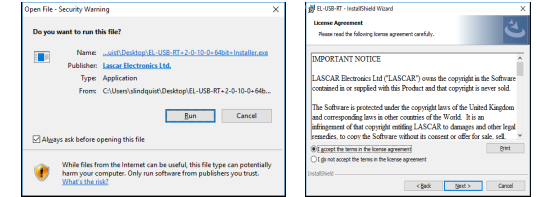
## SOFTWARE INSTALLATION

Windows™ 7, 8 & 10



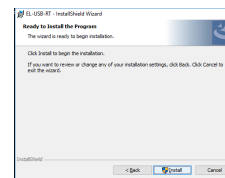
1. Go to [www.lascarelectronics.com/software/easylog-rt](http://www.lascarelectronics.com/software/easylog-rt) to download software on-line.

**NOTE** - Download the EasyLog RT version for 32-bit versions of Windows XP, Vista and 7. Download EasyLog RT 64-bit Compatible for 64-bit versions of Windows 7, 8 and 10.



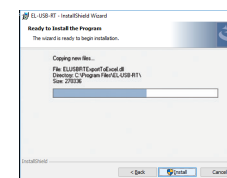
2. Open the downloaded .EXE file and choose Run. This will now run the Installshield Window for EL-USB-RT. Select Next.

3. Read the "IMPORTANT NOTICE", select "I Agree" and "Next".

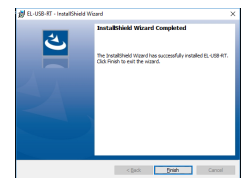


4. Click "Next" to start the Installation

**NOTE** - A progress bar will be displayed until the installation is complete.



5. EasyLog USB is being installed.

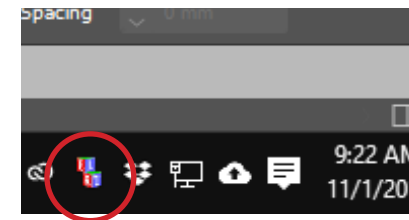


6. Click "Finish". An icon will now be placed on your desktop and in the notification area of the taskbar.

## 1 HOW TO USE EL-USB-RT SOFTWARE

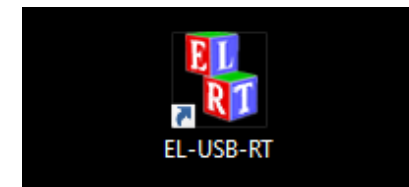
Windows™ 7, 8 and 10

Once installed, the EL-USB-RT software should automatically run. Icons will be displayed in the "Notification Area" of your screen and on the desktop.

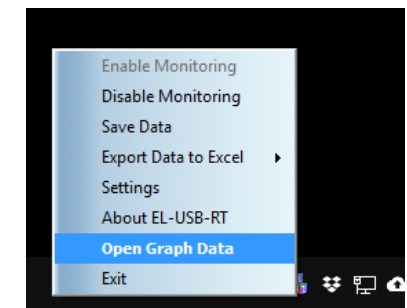


As seen on the desktop and "Notification Area"

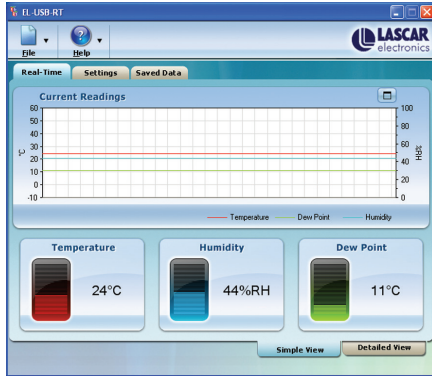
If the icon in the "Notification Area" does not appear, double click the EL-USB-RT icon on the desktop.



To access the software features, right click on the icon within the "Notification Area". You will see the following menu:



If "Open Graph Data" is selected, you will see the following:

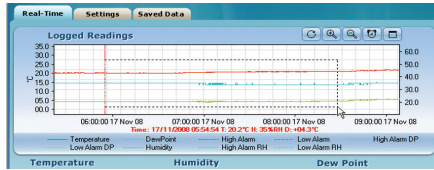


This shows a rolling graph of the readings taken in the last minute.

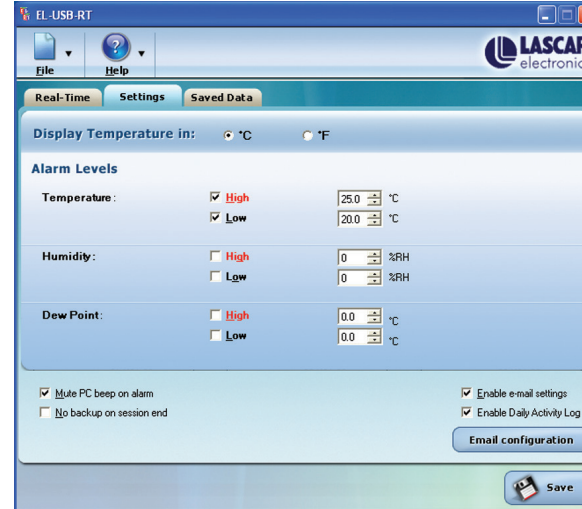
To view a detailed graph, click on "Detailed View". This will display all the data recorded for the current session. This graph does not automatically update.

To include the latest data readings select "Update".

To view an area of this graph in more detail, use the left mouse button to drag a rectangle around the region to be magnified. The previous view can be restored by clicking on "Zoom Out".



Select "Settings" to change the scale and alarms as shown:



You can change the scale between Fahrenheit and Celsius, set alarms, mute the audible alarm, switch off automatic saving\*, enable e-mail alert sending and gain access to the E-mail configuration section (see "4" for E-mail configuration).

\* The current session data is stored in a temporary file. Unless the data is saved at the end of a session, this data will be lost.

Other options can be accessed by right clicking on the icon in the "Notification Area" or file menu, such as:

"Enable Monitoring" and "Disable Monitoring" starts and stops the software from taking readings.

"Save Data" saves the data recorded so far. \*

"Export Data to Excel" opens an Excel worksheet and automatically generates a graph.

"About EL-USB-RT" provides you with Lascar's contact details and the software version number.

"Exit" closes the EL-USB-RT application.

The EL-USB-RT can be configured to send an alert via E-mail in the event of an alarm condition being met. Click "Settings" to access E-mail configuration.

## 4 CONFIGURING EMAIL ALERTS

To configure E-mail alerts, you need to provide the SMTP details of your E-mail account. These include:



"Outgoing mail server name (SMTP)", "Outgoing mail server port number (SMTP)", "User name", "Password", "From address" and "Enable secure connection for this server (SSL)" settings.

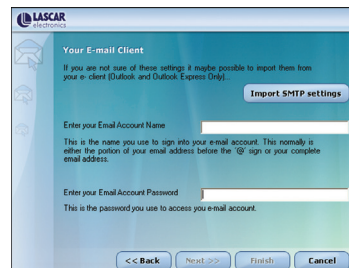
This information can be found within your E-mail client software or if it is an internet E-mail account with their online help regarding SMTP/POP access.

Click "Settings" and then the "E-mail configuration". When first accessed, a configuration wizard will appear to assist you in setting up your e-mail alerts.

Follow the on-screen prompts.

Following completion of the configuration wizard you can access the E-mail settings screen as detailed above. This allows you to manually adjust the e-mail alert settings.

You can re-run the setup wizard at any time by clicking on the "Show Wizard" text.



## THE EASYLOG USB RANGE

- 
**EL-USB-1**  
 USB Temperature  
 -35 to +80°C (-31 to +176°F) range
- 
**EL-USB-1-PRO**  
 USB Industrial temperature  
 -40 to +125°C (-40 to +257°F) range
- 
**EL-USB-2** Higher accuracy available: **EL-USB-2+**  
 USB Temperature & relative humidity  
 -35 to +80°C (-31 to +176°F) & 0 to 100% RH range
- 
**EL-USB-3**  
 USB Voltage  
 0 to 30V d.c. range
- 
**EL-OEM-3** Dev kit inc **EL-OEM-3: EL-OEM-TEST**  
 OEM packaged voltage  
 0 to 2.4V d.c. measurement range
- 
**EL-USB-TC**  
 USB Thermocouple  
 K type probe provided 0 to +200°C (+32 to +392°F)  
 -200 to +732°C (-328 to +1350°F) (J, K & T-type)
- 
**EL-USB-TP-LCD** Higher Accuracy Available: **EL-USB-TP-LCD+**  
 USB Thermistor probe with LCD  
 -40 to +125°C (-40 to +257°F) range
- 
**EL-EnviroPad-TC**  
 Thermometer with inbuilt data logging, 3 data analysis modes  
 K type probe provided 0 to 200°C (+32 to +392°F)  
 -270 to +1300°C (-454 to +2372°F) (J, K, N & T-type)
- 
**EL-USB-RT**  
 USB Real-time temperature, relative humidity and dew-point  
 -10 to +60°C (-14 to +122°F) & 0 to 100% RH range
- 
**EL-USB-1-LCD**  
 USB Temperature with LCD  
 -35 to +80°C (-31 to +176°F) range
- 
**EL-USB-1-RCG**  
 USB Temperature with rechargeable battery  
 -20 to +60°C (-4 to +140°F) range
- 
**EL-USB-2-LCD** Higher Accuracy Available: **EL-USB-2-LCD+**  
 USB Temperature & relative humidity with LCD  
 -35 to +80°C (-31 to +176°F) & 0 to 100% RH range
- 
**EL-USB-4**  
 USB 4 - 20 mA Current  
 4-20mA d.c. measurement range
- 
**EL-USB-CO** Higher Accuracy Available: **EL-USB-CO300**  
 USB Carbon monoxide  
 0 to 1000ppm range
- 
**EL-USB-TC-LCD**  
 USB Thermocouple with LCD  
 K type probe provided 0 to +200°C (+32 to +392°F)  
 -200 to +732°C (-328 to +1350°F) (J, K & T-type)
- 
**EL-USB-ACT**  
 USB AC and DC Millivolt with current clamp input  
 0-707mV a.c. & -1000 to 1000mV d.c.
- 
**EL-USB-5** Higher accuracy available: **EL-USB-5+**  
 USB Event, count & state  
 Up to 100Hz
- 
**EL-USB-LITE**  
 USB Low Cost temperature  
 -10 to +50°C (+14 to +122°F) range