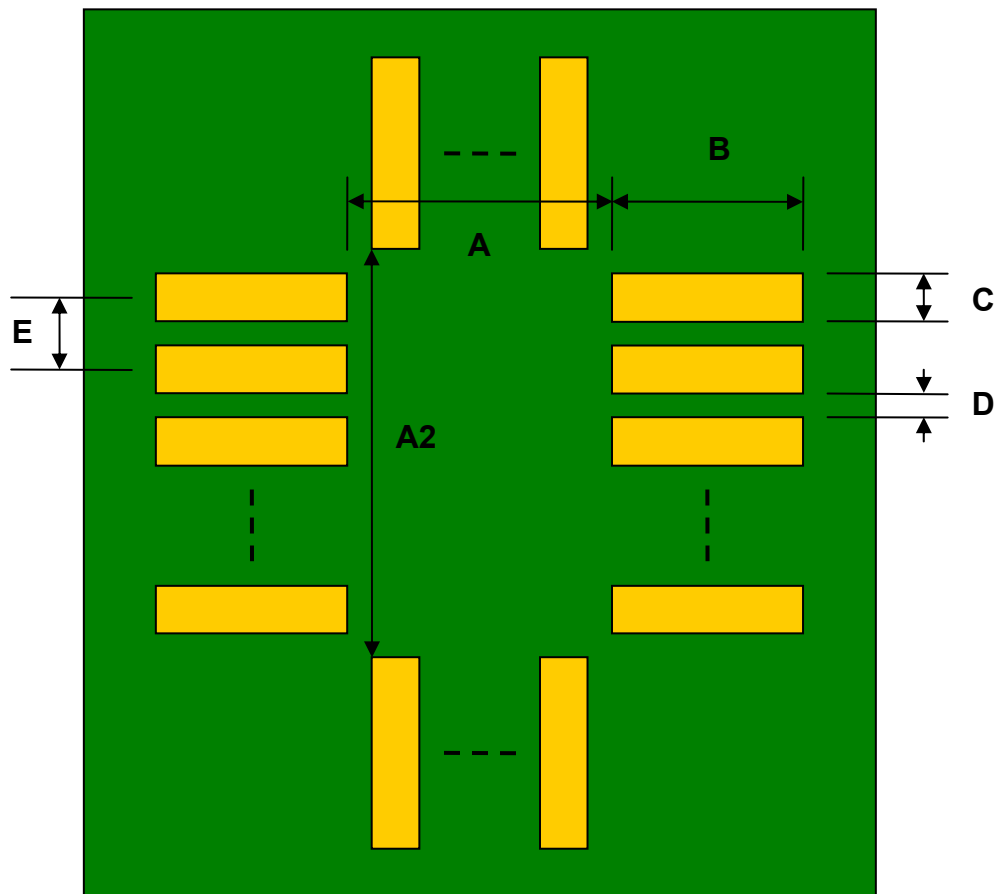


PLCC-28 Socket to DIP-28 SMT Adapter (1.27 mm pitch, 12.5 x 12.5 mm body)

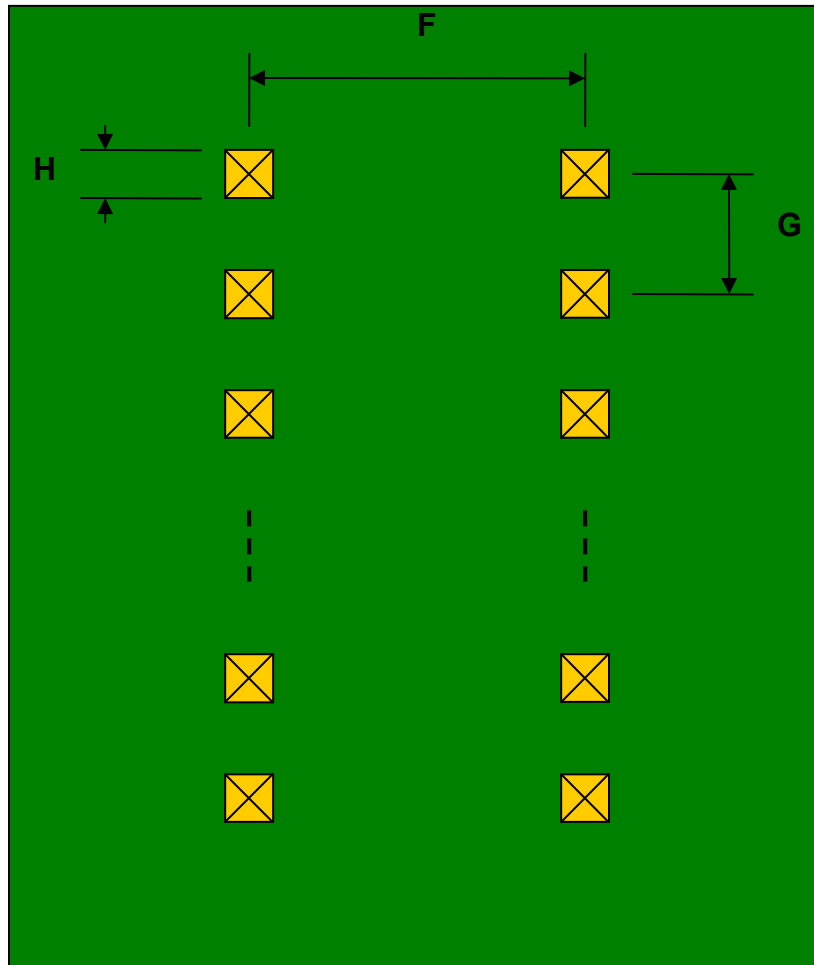
| DIMENSIONS | | | | | | |
|------------|------|------|------|--------|-------|------|
| REF. | mm | | | inches | | |
| | MIN. | TYP. | MAX. | MIN. | TYP. | MAX. |
| A | | 9.25 | | | | |
| A2 | | 9.25 | | | | |
| B | | 2.75 | | | | |
| C | | 0.80 | | | | |
| D | | 0.47 | | | | |
| E | | 1.27 | | | | |
| F | | | | | 0.600 | |
| G | | | | | 0.100 | |
| H | | | | | 0.025 | |

Top View (SMT Footprint)



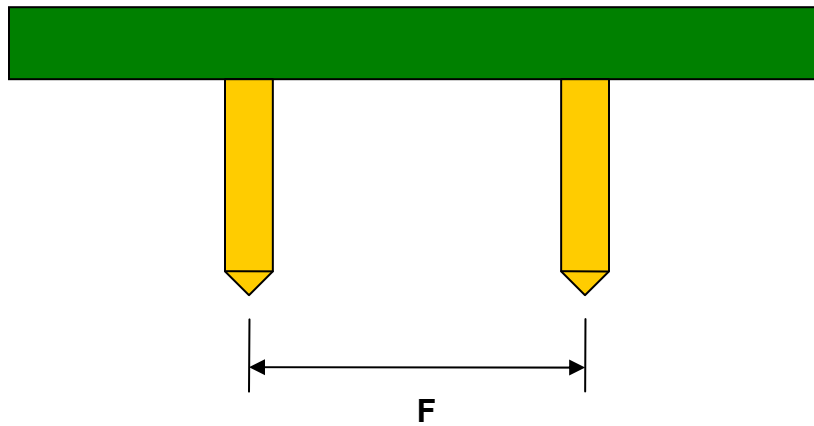
(Representative drawing only - not to scale)

Bottom View (DIP Pins)



(Representative drawing only - not to scale)

Side View (DIP Pins)



(Representative drawing only - not to scale)