

6

5

4

3

2

1

E

E

D

D

C

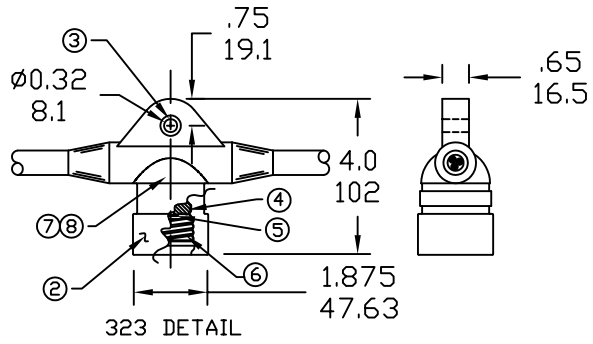
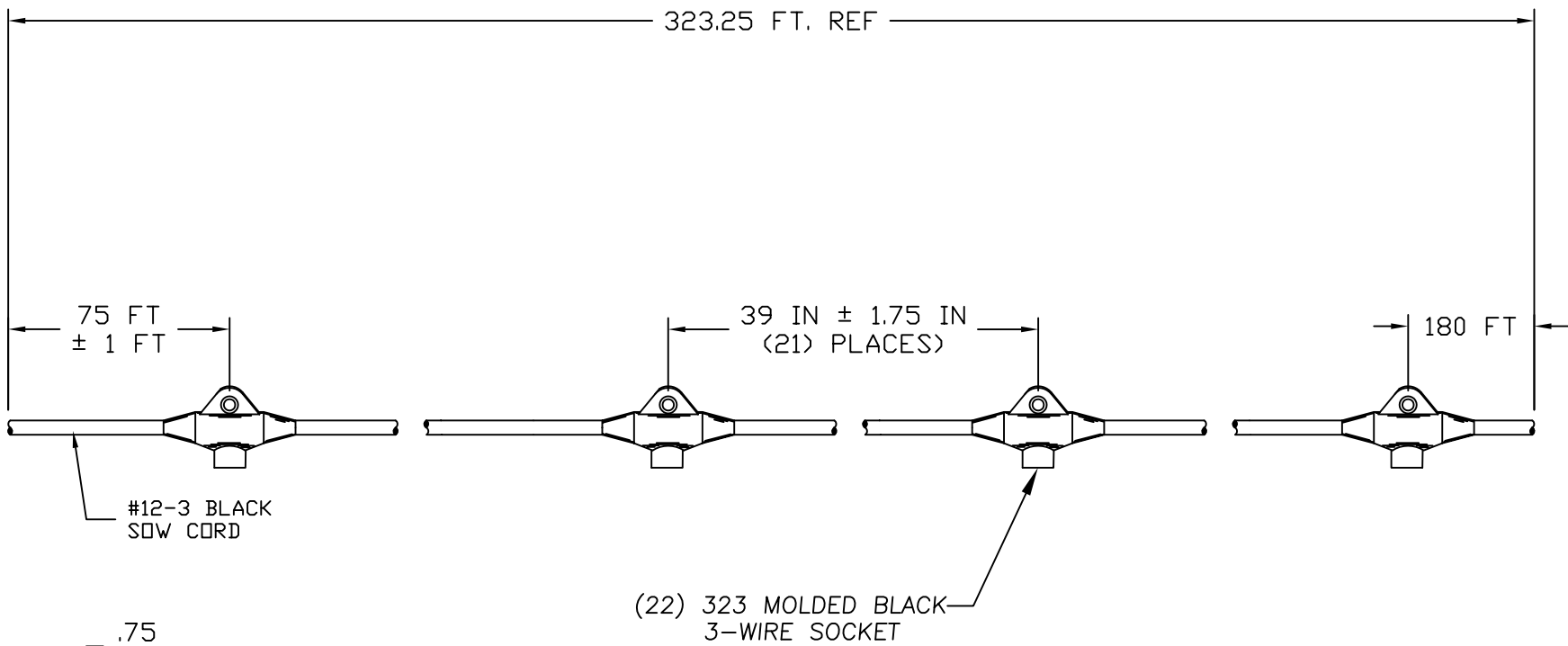
C

B

B

A

A



| ITEM | DESCRIPTION            | MATERIAL    |
|------|------------------------|-------------|
| 1    | #12-3 BLACK CABLE      | SOOW/COPPER |
| 2    | MOLDED SOCKETS BLACK   | NITRILE/PVC |
| 3    | EYELET                 | BRASS       |
| 4    | BUTTON WHITE           | PORCELAIN   |
| 5    | RIVET                  | BRASS       |
| 6    | SCREWSHELL             | COOPER      |
| 7    | 1 CONDUCTOR WIRE BLACK | NEOPRENE    |
| 8    | 1 CONDUCTOR WIRE WHITE | NEOPRENE    |

**NOTE:**  
THE SOCKETS SHOULD NOT HAVE GROUND RINGS; NON-METALLIC GUARDS SHOULD BE USED.

|   |                                |                                       |                         |                      |  |                 |   |                        |  |
|---|--------------------------------|---------------------------------------|-------------------------|----------------------|--|-----------------|---|------------------------|--|
| RELEASE DRAWING<br>EC NO: WNA2011-0173<br>DRWN: TVICKERS 2010/10/01<br>CHKD: HK<br>APPR: DTTITUS 2010/10/28<br>REV: A | QUALITY SYMBOLS<br>▽=0<br>▽C=0 | GENERAL TOLERANCES (UNLESS SPECIFIED) |                         | DIMENSION STYLE INCH |  | SCALE NTS       | DESIGN UNITS INCH   | THIRD ANGLE PROJECTION |  |
|   |                                |                                       | mm                      | INCH                 | DRAWN BY TVICKERS                                    | DATE 2010/10/01 | TITLE STRINGLIGHT 323.25 FT (22) 323@39IN CENTERS 75' LEAD & 180' TAIL  |                        |  |
|   |                                | 4 PLACES                              | ±---                    | ±---                 | CHECKED BY HK  | DATE 2010/10/01 | MOLEX INCORPORATED  |                        |  |
|   |                                | 3 PLACES                              | ±---                    | ±.005                | APPROVED BY DTTITUS                                  | DATE 2010/10/28 | DOCUMENT NO. SD-130106-025  | SHEET NO. 1 OF 1       |  |
| 2 PLACES  | ±0.13                          | ±.010                                 | ANGULAR ±.5°            |                      | DRAFT WHERE APPLICABLE MUST REMAIN WITHIN DIMENSIONS |                 | THIS DRAWING CONTAINS INFORMATION THAT IS PROPRIETARY TO MOLEX INCORPORATED AND SHOULD NOT BE USED WITHOUT WRITTEN PERMISSION |                        |  |
| 1 PLACE   | ±0.25                          | ±.020                                 | MATERIAL NO. 1301060165 |                      | SIZE A   |                 |   |                        |  |