

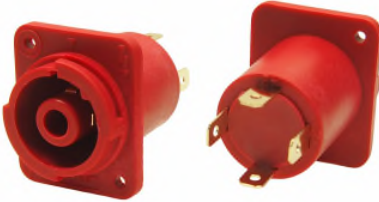


CLIFFCON[®] CONNECTORS

Our Cliffcon[®] 4 pole connectors are intended for any application where a reliable locking touch proof connector system is required. Incorporating a tough, durable construction with gold plated touch proof contacts, easy locking / unlocking mechanism and integral cable clamp, Cliffcon[®] is the ideal connector for many different applications. Sockets are available for chassis and PCB mounting. Specific, non-compatible versions for low (LV) and high (HV) voltage applications.



FCR2068 - 4PC/S/LV
FCR20681 - 4PC/S/PC/LV



FCR2069 - 4PC/S/HV
FCR20691 - 4PC/S/PC/HV



FCR2066 - 4PC/P/LV



FCR2067 - 4PC/P/HV



FCR20663 - 4PC/P90/LV



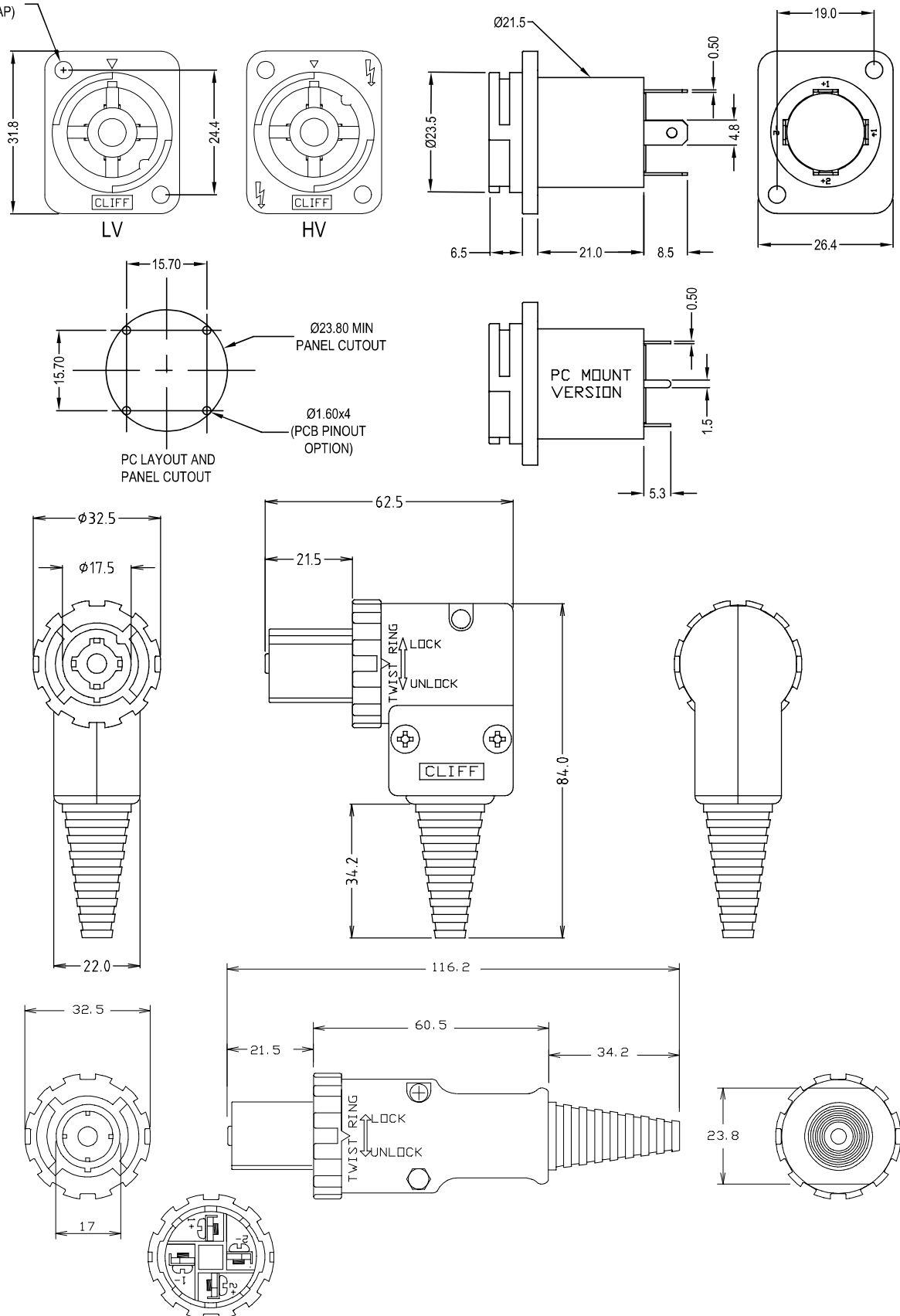
FCR20673 - 4PC/P90/HV

Significant Features

- Safety leading ground pin - makes first, breaks last to prevent damage from arcing if disconnected under load
- Combination Faston quick disconnect and screw connections with clearly marked pin identification inside the line connectors.
- Colour coded system - Blue for 120VAC, Red for 250VAC with different mechanical keying to avoid the possibility of intermating.
- Integral cable clamp for 6mm to 15mm diameter cable.

DIMENSIONS

Ø2.40 HOLES
(SELFTAP)



Specification

- 1) Safety leading ground pin - makes first, breaks last.
- 2) Rated Voltage - Blue (LV) 120V, Red (HV) 250V AC max *
- 3) Rated Current: 4 pin 20A RMS @ 80°C, 30A RMS @ 20°C (5% duty cycle)
- 4) Inrush Current: >30A / 20mS
- 5) Contact Resistance: <3mΩ
- 6) Insulation Resistance: >20MΩ @ 4000V
- 7) Operating Temp: -20°C to +80°C
- 8) Max wire size: 6mm² / 10AWG solid, 4mm² / 12AWG stranded

* Connectors identical electrically, only the designation is LV and HV