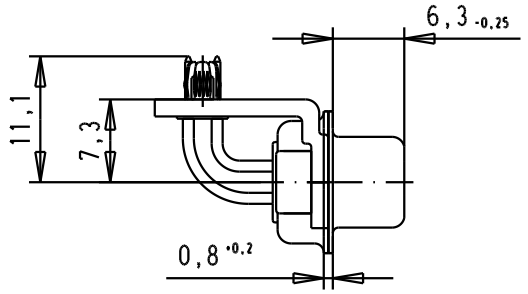
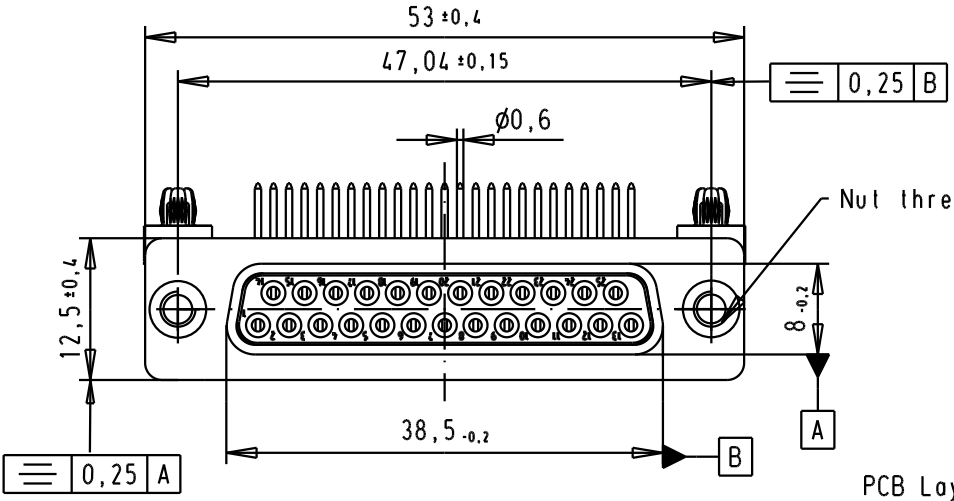


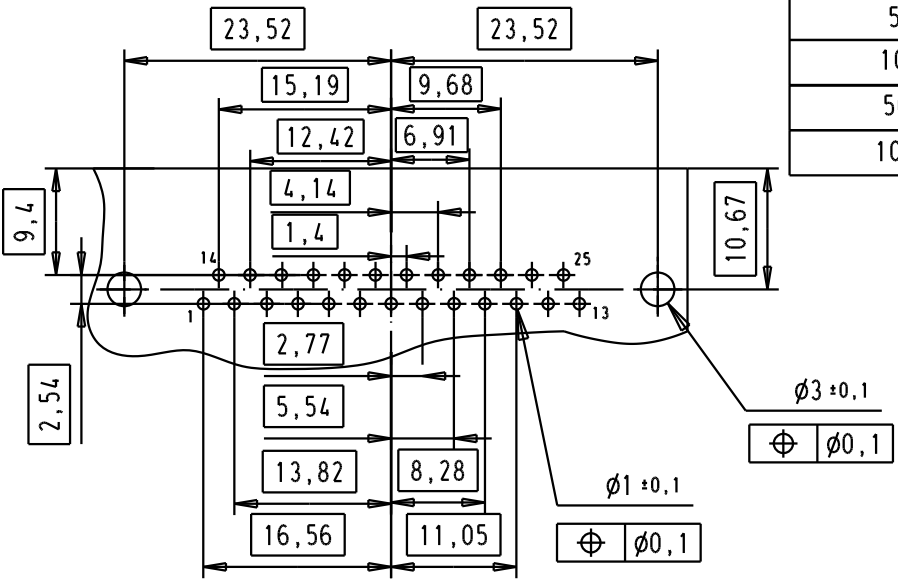
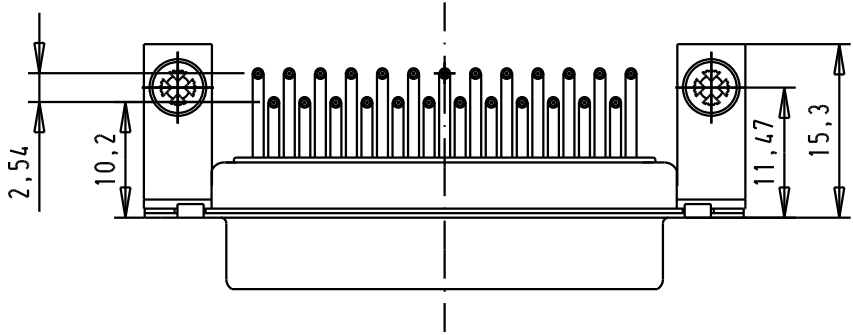
SPECIFICATION

Mating Cycles	500
Filter type	C
Capacitance	470pf ± 20%
Working Voltage	100v
Current Rating	7.5A
Insulation Resistance	>1GΩ

FREQUENCY (MHz)	ATTENUATION (dB)
5	-
10	1dB
50	10dB
100	15dB
500	35dB
1000	32dB




PCB Layout, Component side, thickness 1,6 mm



09643147223	M3
09643147222	UNC 4-40
Part number	Nut thread


				Dat.	Name
			Detail.	8-JUL-02	CV
			Insp.		
33416	19/01/06	JMDR	Stand.		
32137	16/08/04	TR			
31058	8-JUL-02	CV			
Mod.	Dat.	Name			


 All Dim. in mm
 Orig. Size DIN A 4

D-Sub, female, angled,
 25 Poles, turned solder pins,
 tin plated shell with brackets,
 board-locks and clinch nuts

Ma?Ms Lab/
 Scale
 1.5:1

HARTING EURL
 F-95972 Paris



TB 0964314722x

Sub.

Blatt/ Page
 1 / 4