

Customer Information Sheet

DRAWING No.: P19-XX21

SHEET 2 OF 2

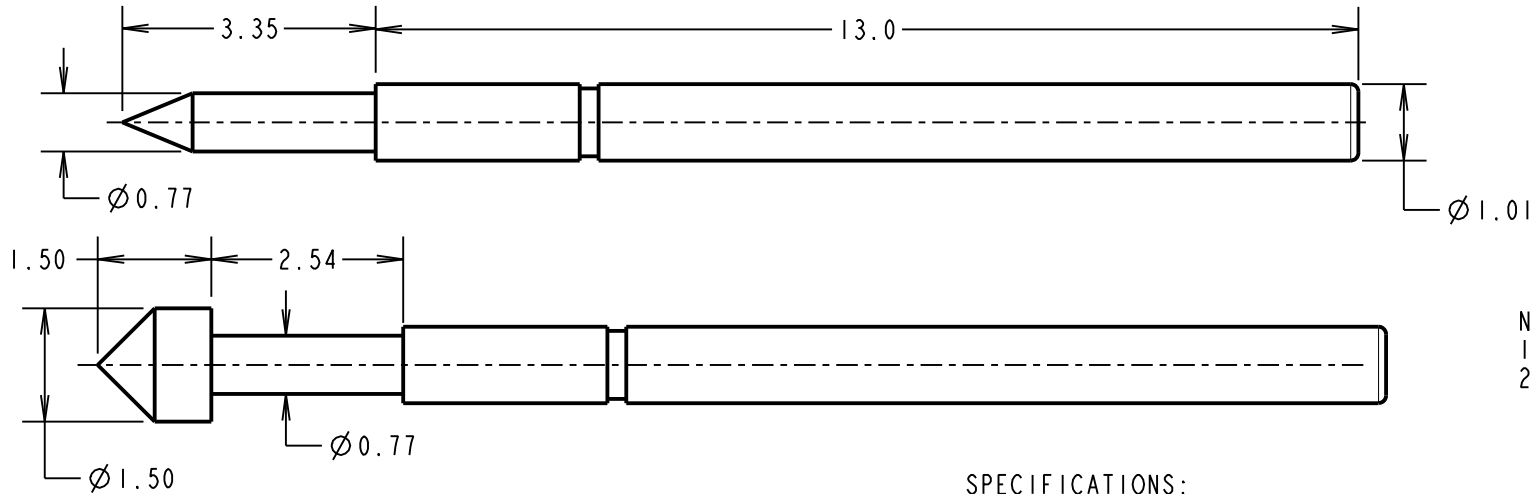
IF IN DOUBT - ASK

©

NOT TO SCALE

THIRD ANGLE PROJECTION

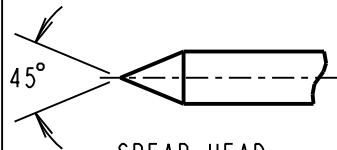
ALL DIMENSIONS IN mm



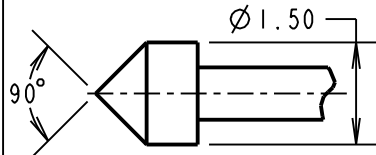
ORDER CODE:
P19-XX21
PROBE HEAD: _____
VARIANT (SEE TABLE)

- NOTES:
- TO BE USED WITH SLEEVE S19-501.
 - SUITABLE FOR A MINIMUM DISTANCE BETWEEN CENTRES OF 1.90mm.

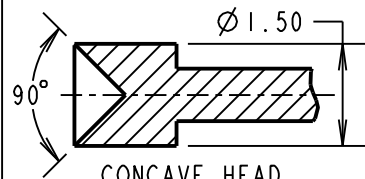
PROBE HEAD VARIANTS



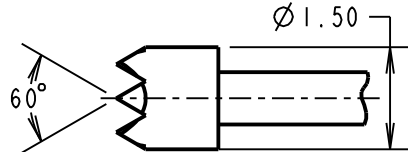
SPEAR HEAD
P19-0121



CONVEX HEAD
P19-2221



CONCAVE HEAD
P19-1121



SERRATED HEAD
P19-4021

SPECIFICATIONS:

MATERIAL:

PLUNGER:

P19-0121 = STEEL

P19-1121, P19-2221, P19-4021 = BERYLLIUM COPPER

BARREL = BRASS

SPRING = STAINLESS STEEL

FINISH:

PLUNGER AND BARREL = GOLD

ELECTRICAL:

CURRENT RATING = 3A

CONTACT RESISTANCE = 100mΩ MAX AT 2/3 TRAVEL

MECHANICAL:

DURABILITY = 100,000 CYCLES MIN

FULL TRAVEL = 2.54mm

SPRING FORCES:

AT FULL TRAVEL = 1.26N ± 0.25N (128g ± 20%)

AT 2/3 TRAVEL = 0.88N ± 0.18N (90g ± 20%)

ENVIRONMENTAL:

OPERATING TEMPERATURE = -40°C TO +180°C

| | | | |
|----------------|------|--------------|--------|
| MSP | 6 | 21.07.17 | 20124 |
| NAME | ISS. | DATE | C/NOTE |
| APPROVED: | | M. PERREN | |
| CHECKED: | | M. PLESTED | |
| DRAWN: | | W. J. BOURNE | |
| CUSTOMER REF.: | | | |
| ASSEMBLY DRG: | | | |

HARWIN

www.harwin.com
technical@harwin.com

THIS DRAWING AND ANY INFORMATION OR DESCRIPTIVE MATTER SET OUT HEREON ARE CONFIDENTIAL AND COPYRIGHT PROPERTY OF THE HARWIN GROUP AND MUST NOT BE DISCLOSED, LOANED, COPIED OR USED FOR MANUFACTURING, TENDERING OR FOR ANY OTHER PURPOSE WITHOUT THEIR WRITTEN PERMISSION.

TOLERANCES

X. = ±1mm
X.X = ±0.50mm
X.XX = ±0.10mm
X.XXX = ±0.01mm

ANGLES = ±5°
UNLESS STATED

MATERIAL:

SEE ABOVE

FINISH:

SEE ABOVE

S/AREA:

mm²

TITLE:

1.90mm MIN. CENTRE
TWO-PIECE SPRING PROBE

DRAWING NUMBER:

P19-XX21

SHT
2 OF 2