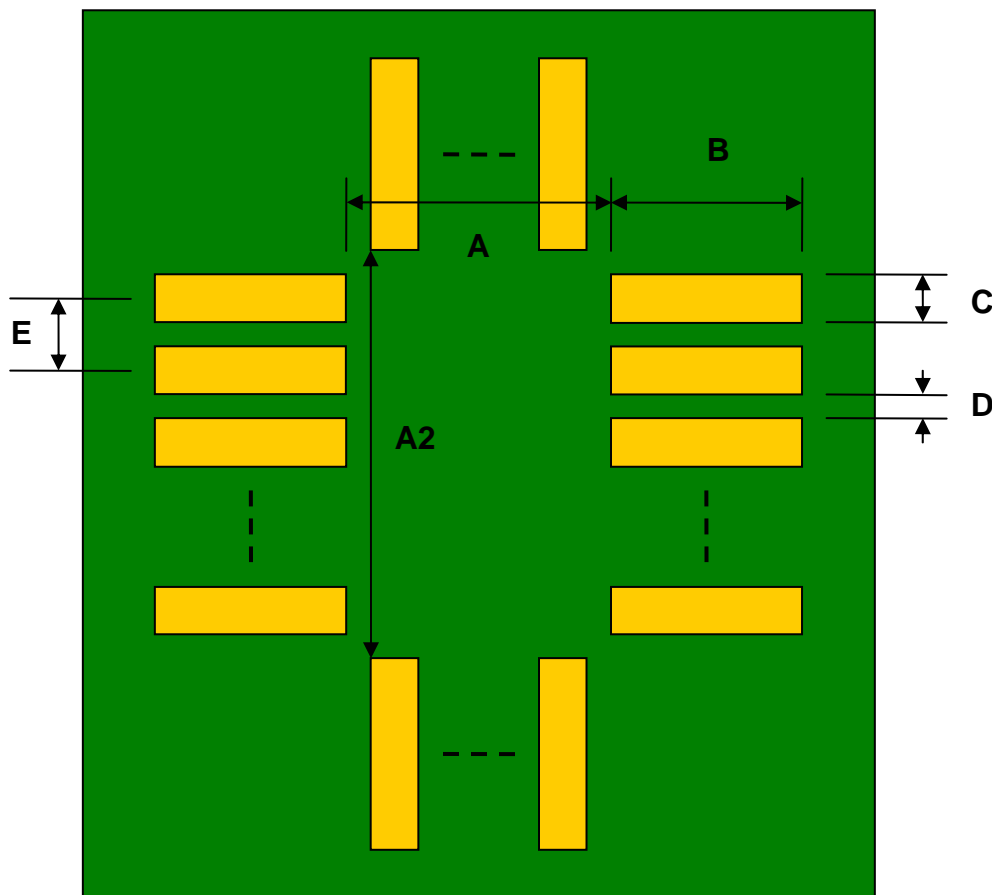


TQFP-52/LQFP-52/MQFP-52 to DIP-52 SMT Adapter (0.65 mm pitch, 10 x 10 mm body)

REF.	DIMENSIONS					
	mm			inches		
	MIN.	TYP.	MAX.	MIN.	TYP.	MAX.
A		10.00				
A2		10.00				
B		2.00				
C		0.44				
D		0.21				
E		0.65				
F					0.600	
G					0.100	
H					0.025	

Top View (SMT Footprint)



(Representative drawing only - not to scale)

Bottom View (DIP Pins)



(Representative drawing only - not to scale)

Side View (DIP Pins)



(Representative drawing only - not to scale)