



**ANATECH ELECTRONICS INC**  
RF & Microwave Filters & Products

# INMARSAT Ceramic Bandpass Filter

Part Number: **AM1542B556**



## Electrical specifications

**Center Frequency:** 1542 MHz  
**Bandwidth:** 34 MHz  
**Input / Output Impedance:** 50 Ohms  
**Passband:** 1525-1559 MHz  
**Passband Insertion Loss:** 1525-1559 MHz 1.0 dB  
**Passband Ripple:** 1.0 dB max  
**Passband Return Loss:** 1525-1559 MHz 12.0 dB  
**Rejection:** 1460 MHz 25.0 dB  
**Rejection 2:** 1625 MHz 25.0 dB  
**Rejection 3:** 1710 MHz 40.0 dB  
**Power Handling:** 1 W

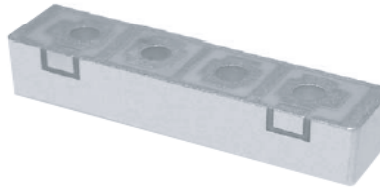
## Mechanical

**Mounting Method:** SMT  
**Dimensions:** 33.58 x 6.68 x 7.85 mm

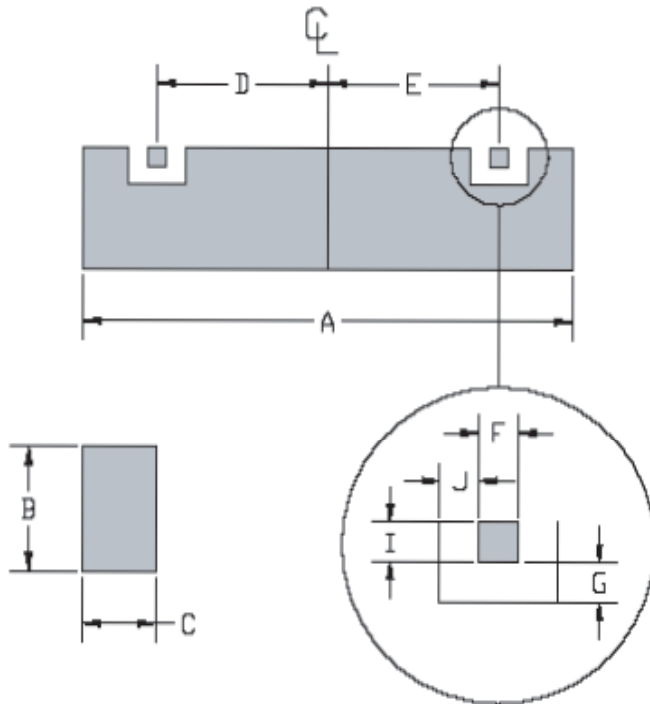
## Environmental

**Operating Temperature:** -40°C to +70°C  
**Storage Temperature:** -50°C to +90°C

This product is RoHs compliant.



## Mechanical Drawing:



Dim	Nominal (mm)	Tolerance (mm) +/- or max
A	33.58	max
B	6.68	max
C	7.85	max
D	10.81	0.127
E	10.81	0.127
F	2.62	0.127
G	0.635	0.127
H		
I	2.032	0.127
J	0.635	0.127



**ANATECH ELECTRONICS INC**  
RF & Microwave Filters & Products

# INMARSAT Ceramic Bandpass Filter

Part Number: AM1542B556



## Response Plot:

